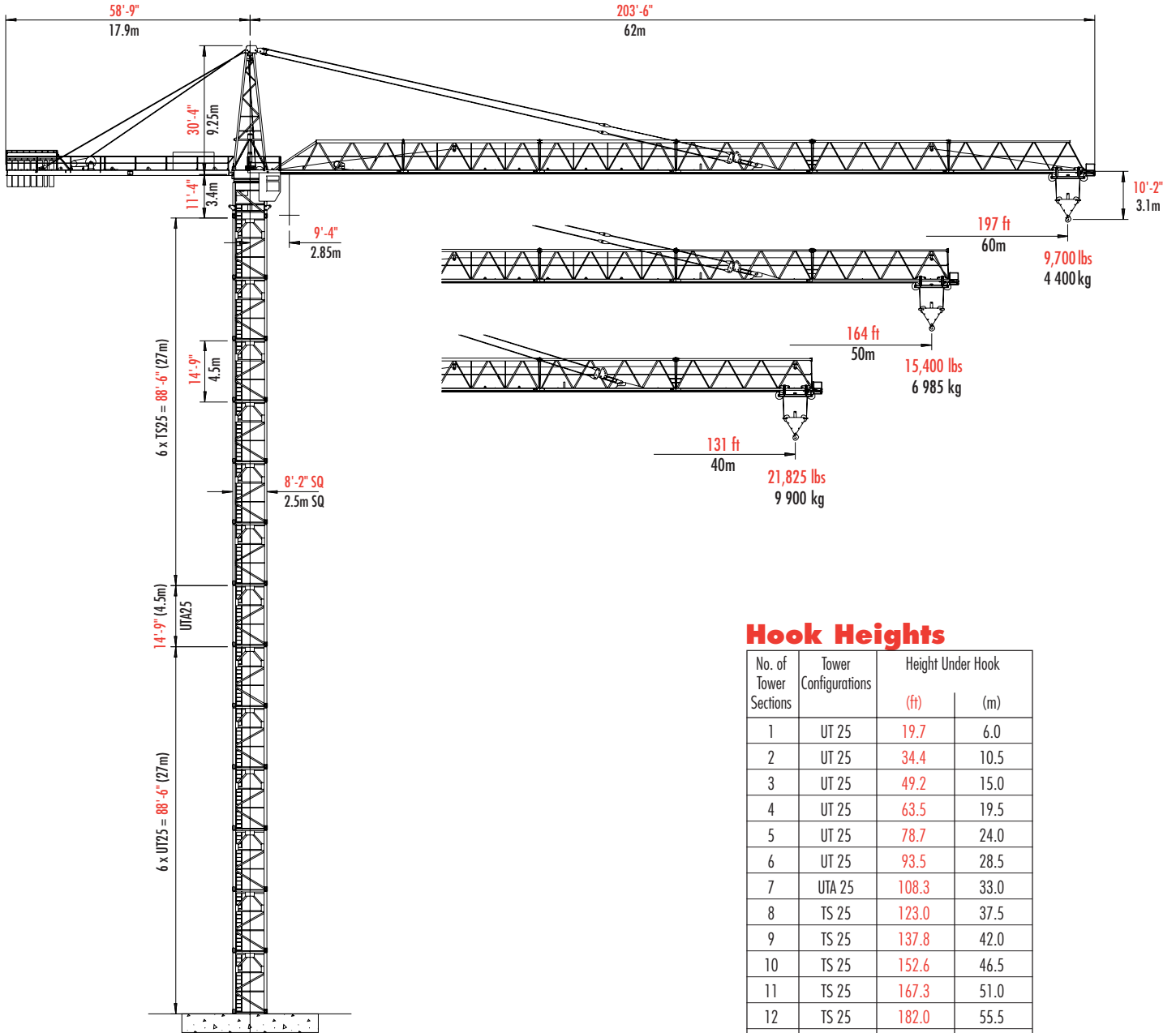


Wolff WK 415-EC TOWER CRANE



**STATIONARY
FREESTANDING**

Hook Heights

No. of Tower Sections	Tower Configurations	Height Under Hook	
		(ft)	(m)
1	UT 25	19.7	6.0
2	UT 25	34.4	10.5
3	UT 25	49.2	15.0
4	UT 25	63.5	19.5
5	UT 25	78.7	24.0
6	UT 25	93.5	28.5
7	UTA 25	108.3	33.0
8	TS 25	123.0	37.5
9	TS 25	137.8	42.0
10	TS 25	152.6	46.5
11	TS 25	167.3	51.0
12	TS 25	182.0	55.5
13	TS 25*	197.0	60.0

* Lower the top climbing unit to base of crane prior to operating crane at maximum hook height.

Other tower combinations are possible. Contact Morrow Equipment for additional information.



Morrow Equipment

SPECIFICATIONS

Wolff Tower Crane Model WK 415-EC

Hoist Speed and Capacity

Hoist Unit	Hw 10 85 3	2-Part Line				
		Gear	Capacity	Line Speed	Capacity	Line Speed
114 hp (85.0 kW) AC hoist unit 3-speed gearbox Remote-controlled gear shifting Eddy current brake		1	22,045 lbs @	134 fpm	10 000 kg @	40 m/min
		2	9,920 lbs @	276 fpm	4 500 kg @	84 m/min
		3	3,305 lbs @	670 fpm	1 500 kg @	204 m/min
		4-Part Line				
		1	44,090 lbs @	67 fpm	20 000 kg @	20 m/min
		2	19,840 lbs @	138 fpm	9 000 kg @	42 m/min
		3	6,610 lbs @	335 fpm	3 000 kg @	102 m/min

Motor Information

Drive Unit	Horsepower	Kilowatts	Speed	
Trolley (Tw 76) 2-Part Line	9.8 hp	7.3 kW	12 - 120/236 fpm	3.6 - 36/72 m/min
Trolley (Tw 76) 4-Part Line	9.8 hp	7.3 kW	6 - 60/118 fpm	1.8 - 18/36 m/min
Swing (Dw-SG)	2 x 9.8 hp	2 x 7.3 kW	0.7 rpm	

Power Requirements

480 Volts — 3-phase — 60-cycle	200 Amperes service with 114 hp (85 kW) hoist unit
--------------------------------	--

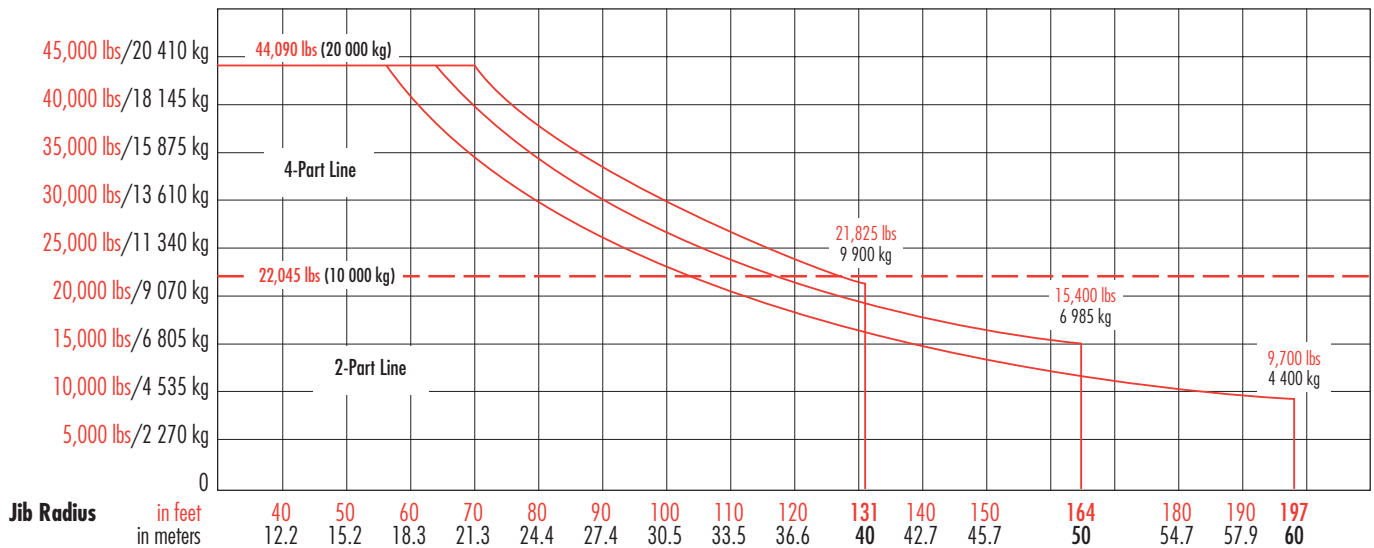
Specifications subject to change without notice. For other configurations and specifications, contact Morrow Equipment.

Morrow Equipment Co., L.L.C.

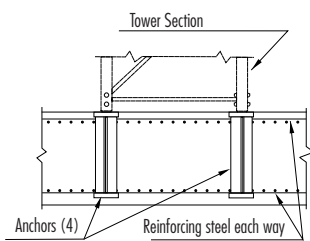
Wolff Tower Crane Model WK 415-EC

Hook Radius	4-Part Line	2-Part Line	ft	56	66	82	98	112	118	131	141	148	154	164	171	180	190	197
	Max Capacity – Radius	Max Capacity – Radius	m	17	20	25	30	34	36	40	43	45	47	50	52	55	58	60
197 ft 60m	44,090 lbs – 56 ft 20 000 kg – 16.9m	22,045 lbs – 103 ft 10 000 kg – 31.4m	lbs	44,090	36,600	28,500	23,200	20,000	18,700	16,400	15,000	14,200	13,400	12,400	11,800	10,900	10,200	9,700
			kg	20 000	16 600	12 930	10 525	9 070	8 480	7 440	6 805	6 440	6 080	5 625	5 350	4 945	4 625	4 400
164 ft 50m	44,090 lbs – 66 ft 20 000 kg – 20m	22,045 lbs – 122 ft 10 000 kg – 37.2m	lbs	44,090	44,090	34,600	28,200	24,500	22,900	20,200	18,600	17,600	16,700	15,400				
			kg	20 000	20 000	15 695	12 790	11 115	10 385	9 165	8 435	7 985	7 575	6 985				
131 ft 40m	44,090 lbs – 70 ft 20 000 kg – 21.4m	22,045 lbs – 130 ft 10 000 kg – 39.6m	lbs	44,090	44,090	37,170	30,360	26,460	24,755	21,825								
			kg	20 000	20 000	16 860	13 770	12 000	11 230	9 900								

Capacity

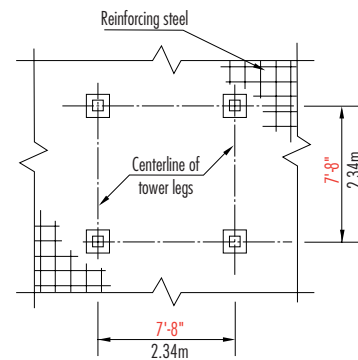


Foundation Details



Elevation

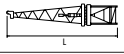


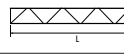

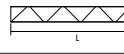
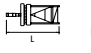
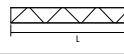

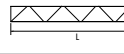
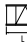
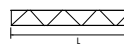
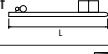
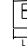
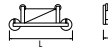





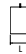
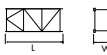
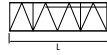
FOUNDATION (Concrete)



Plan View

Component List

WK 415-EC

Description	Dimensions*	Weight	Description	Dimensions*	Weight
Turntable & Tower Top ¹ 	41'-8" x 9'-3" x 9'-6" 12.7m x 2.82m x 2.9m	38,300 lbs 17 370 kg	Jib Section ① 	32'-6" x 7'-5" x 8'-2" 9.91m x 2.25m x 2.48m	6,170 lbs 2 800 kg
Hydraulic Cylinder, Pump and Reservoir 	17'-7" x 1'-6" x 2'-9" 5.35m x 0.46m x 0.83m	7,700 lbs 3 490 kg	Jib Section ② 	34'-0" x 7'-5" x 8'-2" 10.36m x 2.25m x 2.48m	5,290 lbs 2 400 kg
Tower Top 	30'-2" x 7'-11" x 8'-4" 9.2m x 2.4m x 2.54m	8,000 lbs 3 630 kg	Jib Section ③ 	34'-0" x 7'-5" x 8'-2" 10.36m x 2.25m x 2.48m	5,290 lbs 2 400 kg
Turntable with Slewing Motors 	25'-8" x 9'-3" x 9'-6" 7.83m x 2.82m x 2.9m	30,300 lbs 13 745 kg	Jib Section ④ 	34'-0" x 7'-5" x 8'-2" 10.36m x 2.25m x 2.48m	5,335 lbs 2 420 kg
Turntable Upper Part ² 	7'-10" x 9'-3" x 9'-6" 2.39m x 2.82m x 2.9m	15,500 lbs 7 030 kg	Jib Section ⑤ 	34'-0" x 7'-5" x 8'-2" 10.36m x 2.25m x 2.48m	4,300 lbs 1 950 kg
Turntable Lower Part ³ 	9'-2" x 8'-4" x 8'-9" 2.8m x 2.54m x 2.67m	14,800 lbs 6 715 kg	Jib Section ⑥ 	32'-10" x 7'-5" x 8'-2" 10.0m x 2.25m x 2.48m	2,955 lbs 1 340 kg
Counterjib with Hoist Unit & Switchbox ⁴ 	54'-6" x 9'-6" x 6'-1" 16.6m x 2.9m x 1.85m	22,575 lbs 10 240 kg	Jib Assembly ⁵ ①②③④⑤⑥ 197'-ft (60m)	199'-5" x 7'-5" x 8'-2" 60.8m x 2.25m x 2.48m	35,495 lbs 16 100 kg
Operator Cab with Access Platform 	5'-8" x 3'-4" x 7'-3" 1.73m x 1.02m x 2.21m	1,700 lbs 770 kg	Jib Assembly ⁵ ①②③④⑤ 164'-ft (50m)	166'-7" x 7'-5" x 8'-2" 50.8m x 2.25m x 2.48m	32,540 lbs 14 760 kg
Trolley 	9'-7" x 8'-4" x 3'-5" 2.91m x 2.54m x 1.05m	1,465 lbs 665 kg	Jib Assembly ⁵ ①②④⑤ 131'-ft (40m)	133'-10" x 7'-5" x 8'-2" 40.8m x 2.25m x 2.48m	27,030 lbs 12 260 kg
Hook Block 2/4-part Combination 	6'-2" x 0'-9" x 6'-11" 1.87m x 0.23m x 2.11m	1,500 lbs 680 kg	Counterweight Block A 	6'-5" x 1'-4" x 6'-10" 1.96m x 0.40m x 2.08m	8,200 lbs 3 720 kg
Tower Section TS 25 	15'-10" x 8'-2" x 8'-3" 4.82m x 2.5m x 2.52m	6,065 lbs 2 750 kg	Counterweight Block B 	6'-5" x 1'-1" x 6'-10" 1.96m x 0.33m x 2.08m	6,600 lbs 2 995 kg
Tower Section UT 25 	15'-11" x 8'-2" x 8'-4" 4.84m x 2.5m x 2.54m	8,480 lbs 3 850 kg	Counterweight Block C 	6'-5" x 0'-10" x 6'-10" 1.96m x 0.25m x 2.08m	5,000 lbs 2 270 kg
Transition Section UTA 25 	15'-10" x 8'-2" x 8'-4" 4.82m x 2.5m x 2.54m	8,035 lbs 3 645 kg	Top Climbing Unit KWH 25-80 ⁶ 	29'-2" x 10'-4" x 9'-10" 8.9m x 3.15m x 3.0m	17,415 lbs 7 900 kg

* Dimensions expressed as Length x Width x Height.

¹ Does not include cab and hydraulics.

² Includes race bearing, gearboxes and motors.

³ Does not include race bearing.

⁴ Does not include wire rope.

⁵ Jib assemblies include jib sections, pendants, trolley and trolley rope.

⁶ Does not include hydraulic cylinder.

NOTE: Weights and dimensions are approximate. Scale components before lifting.



Morrow Equipment
C O M P A N Y, L. L. C.

3218 Pringle Road SE • P O Box 3306 • Salem OR 97302 USA • 503/585 5721 • Fax 503/363 1172



Branch Offices: Atlanta, GA • Chicago, IL • Denver, CO • Honolulu, HI • Houston, TX • Los Angeles, CA • Las Vegas, NV
Millwood, NY • San Francisco, CA • Seattle, WA • Miami, FL • Tampa, FL • Washington, DC • Sydney, Australia
Wellington, New Zealand • Vancouver, BC, Canada • Toronto, ON, Canada • Mexico City, Mexico • Monterrey, Mexico