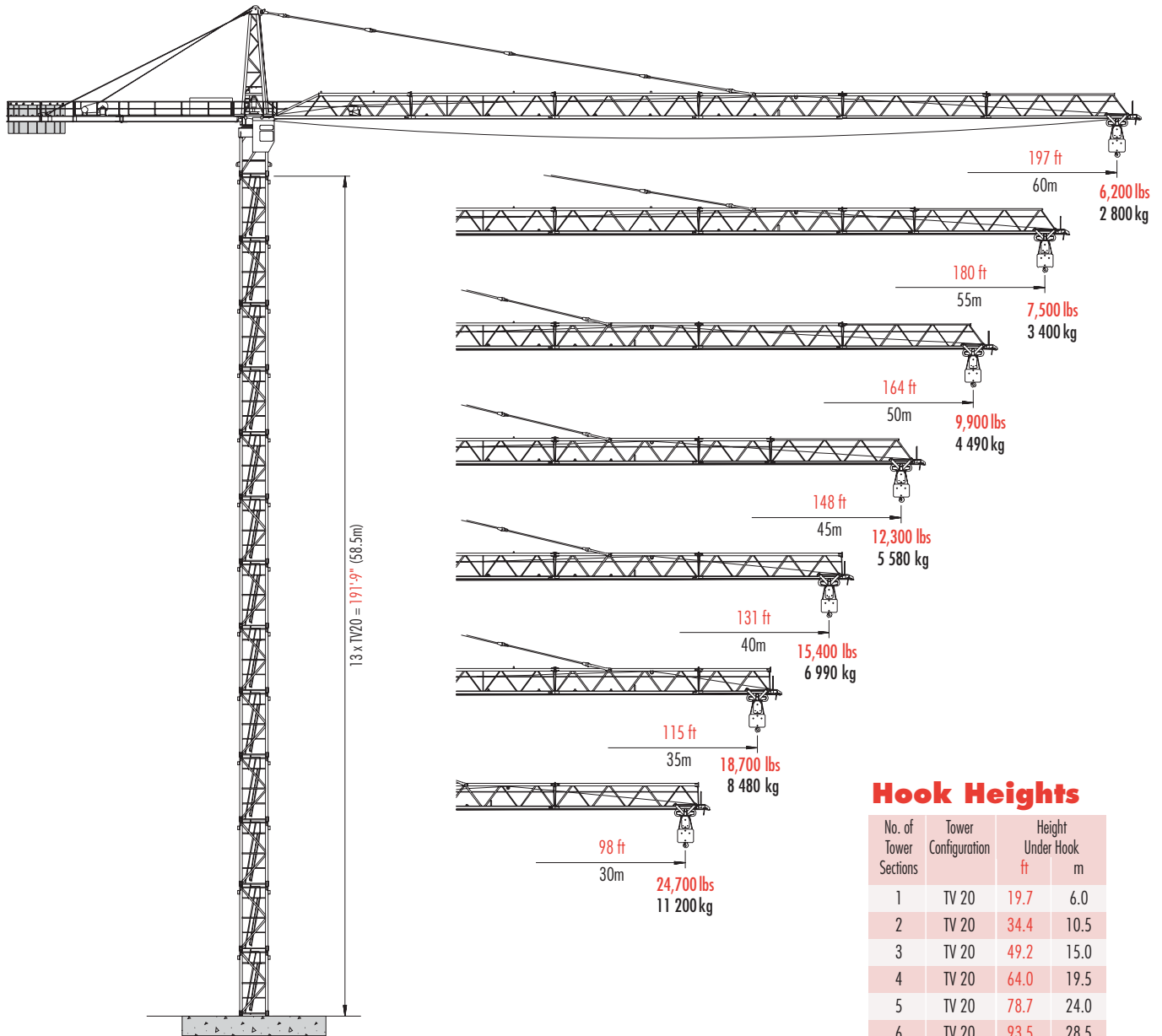


Wolffkran 315 R

TOWER CRANE



FREESTANDING
(stationary)

* Lower top climbing unit to base of crane prior to operating crane at maximum hook height.

Other tower combinations possible, contact Morrow Equipment for additional information.

Hook Heights

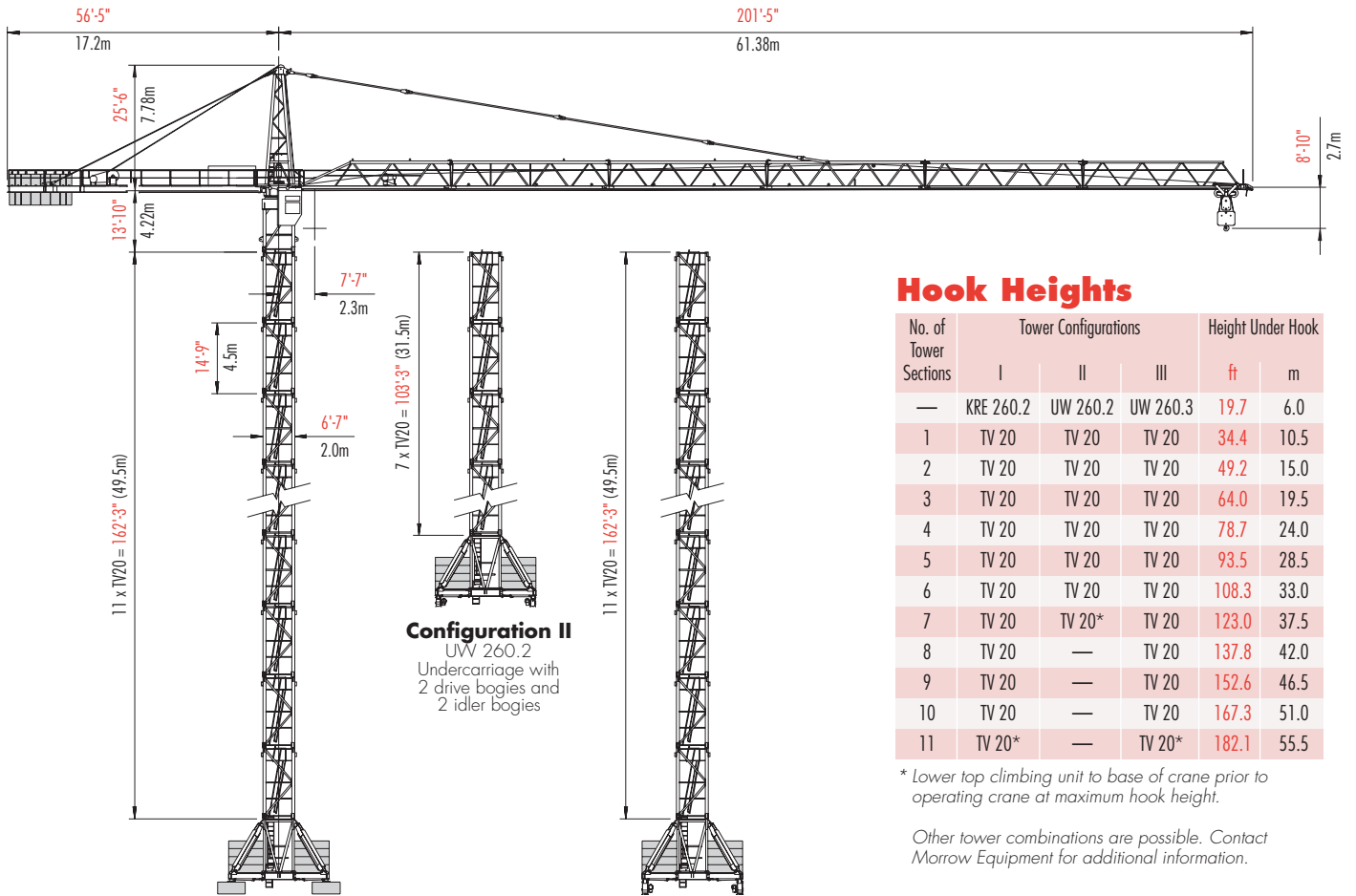
No. of Tower Sections	Tower Configuration	Height Under Hook	
		ft	m
1	TV 20	19.7	6.0
2	TV 20	34.4	10.5
3	TV 20	49.2	15.0
4	TV 20	64.0	19.5
5	TV 20	78.7	24.0
6	TV 20	93.5	28.5
7	TV 20	108.3	33.0
8	TV 20	123.0	37.5
9	TV 20	137.8	42.0
10	TV 20	152.6	46.5
11	TV 20	167.3	51.0
12	TV 20	182.0	55.5
13	TV 20*	197.0	60.0



Morrow Equipment

Configurations

Wolffkran 315 R



Hook Heights

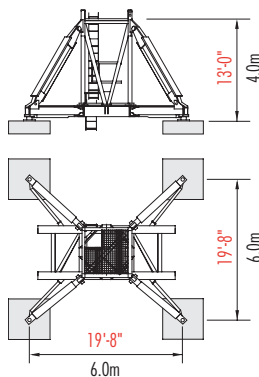
No. of Tower Sections	Tower Configurations			Height Under Hook	
	I	II	III	ft	m
—	KRE 260.2	UW 260.2	UW 260.3	19.7	6.0
1	TV 20	TV 20	TV 20	34.4	10.5
2	TV 20	TV 20	TV 20	49.2	15.0
3	TV 20	TV 20	TV 20	64.0	19.5
4	TV 20	TV 20	TV 20	78.7	24.0
5	TV 20	TV 20	TV 20	93.5	28.5
6	TV 20	TV 20	TV 20	108.3	33.0
7	TV 20	TV 20*	TV 20	123.0	37.5
8	TV 20	—	TV 20	137.8	42.0
9	TV 20	—	TV 20	152.6	46.5
10	TV 20	—	TV 20	167.3	51.0
11	TV 20*	—	TV 20*	182.1	55.5

* Lower top climbing unit to base of crane prior to operating crane at maximum hook height.

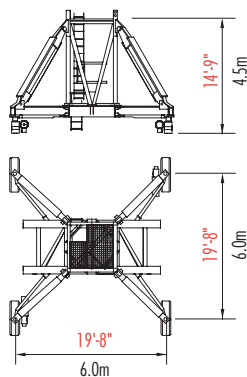
Other tower combinations are possible. Contact Morrow Equipment for additional information.

Configuration I
KRE 260.2
Cross Frame

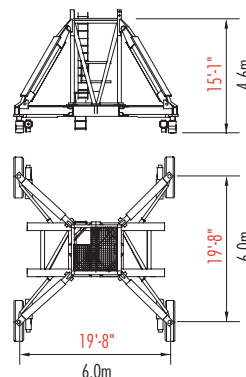
Configuration III
UW 260.3
Undercarriage with
4 drive bogies



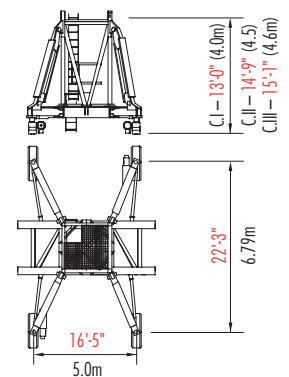
Configuration I
KRE 260.2 Cross Frame



Configuration II
UW 260.2 Undercarriage



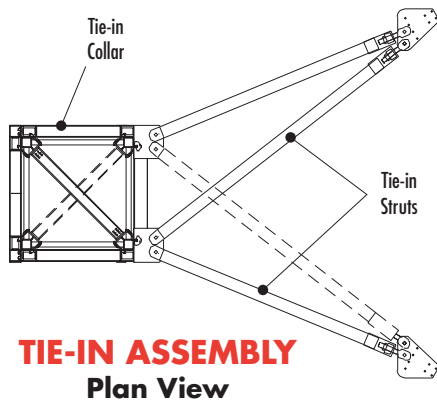
Configuration III
UW 260.3 Undercarriage



Alternate Configuration
for KRE 260.2, UW 260.2 & UW 260.3 available with restrictions. Contact Morrow Equipment for additional information.

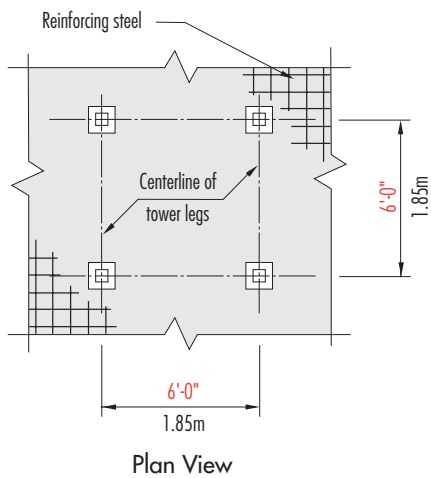
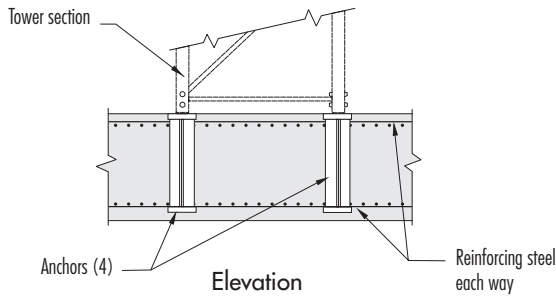
Configurations

Wolffkran 315 R



NOTE! If hook height exceeds 330 ft (100.0m), the number of tower sections above uppermost tie-in location **MUST** be reduced by 2 tower sections.

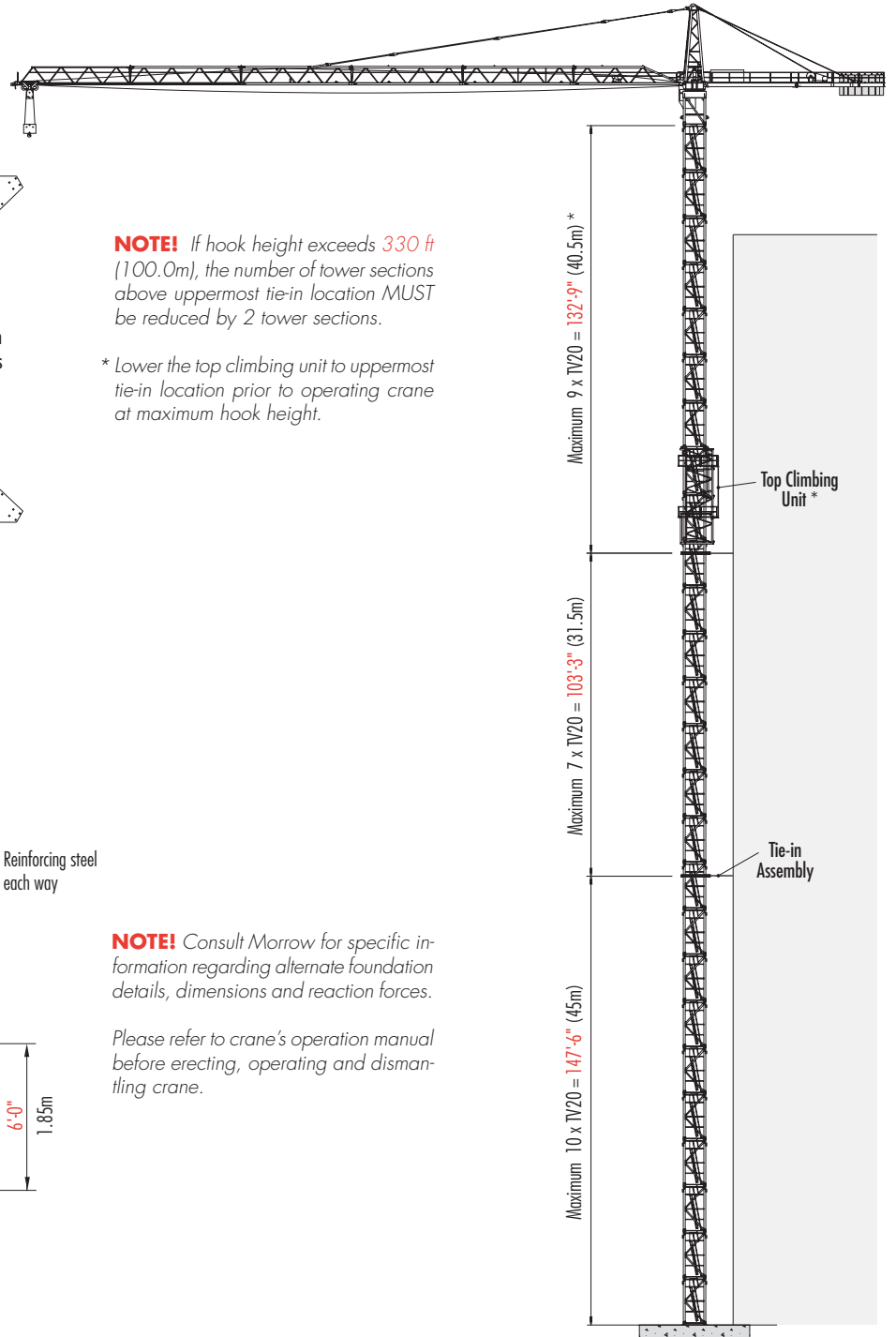
* Lower the top climbing unit to uppermost tie-in location prior to operating crane at maximum hook height.



FOUNDATION
(Concrete Slab)

NOTE! Consult Morrow for specific information regarding alternate foundation details, dimensions and reaction forces.

Please refer to crane's operation manual before erecting, operating and dismantling crane.



TOP CLIMBING
with TV 20 Tower Sections
(Tied to Structure)

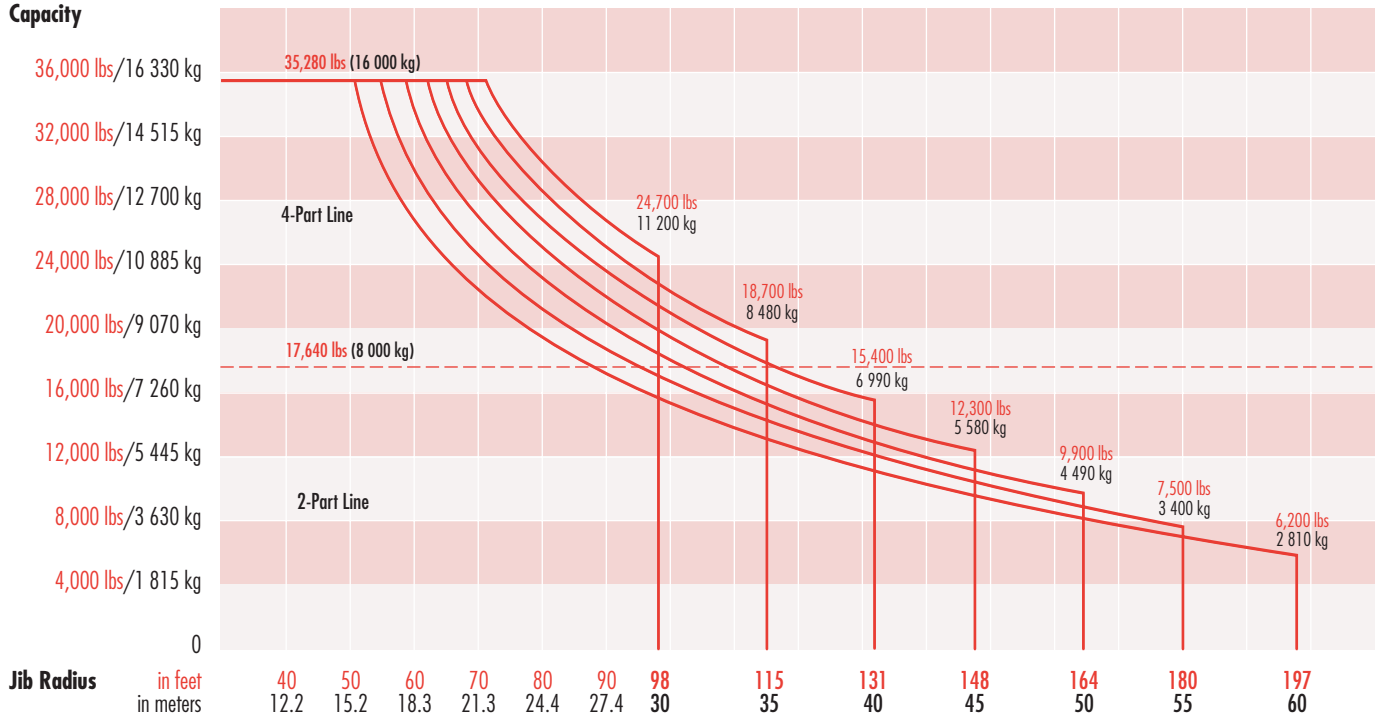
Radius & Capacities

Wolffkran 315 R

Hook Radius	4-Part Line		2-Part Line		ft	51	66	80	98	110	115	125	131	140	148	160	164	180	190	197	
	Max Capacity – Radius	Max Capacity – Radius	Max Capacity – Radius	Max Capacity – Radius	m	15.5	20	25.9	30	33.5	35	38.1	40	42.7	45	48.8	50	55	57.9	60	
197 ft 60m	35,280 lbs – 51 ft 16 000 kg – 15.5m	17,640 lbs – 91 ft 8 000 kg – 27.8m	lbs 35,280	26,190	19,090	16,005	13,910	13,205	11,705	11,000	10,010	9,390	8,400	8,090	7,100	6,505	6,200				
180 ft 55m	35,280 lbs – 53 ft 16 000 kg – 16.2m	17,640 lbs – 95 ft 8 000 kg – 29m	lbs 35,280	27,490	20,105	16,800	14,595	13,910	12,300	11,595	10,690	10,010	8,905	8,600	7,500						
164 ft 50m	35,280 lbs – 59 ft 16 000 kg – 17.9m	17,640 lbs – 105 ft 8 000 kg – 32.1m	lbs 35,280	30,910	22,705	19,090	16,710	15,805	14,110	13,295	12,190	11,400	10,205	9,900							
148 ft 45m	35,280 lbs – 62 ft 16 000 kg – 18.9m	17,640 lbs – 111 ft 8 000 kg – 33.9m	lbs 35,280	33,005	24,295	20,390	17,900	16,995	15,300	14,310	13,205	12,300									
131 ft 40m	35,280 lbs – 66 ft 16 000 kg – 20m	17,640 lbs – 117 ft 8 000 kg – 35.9m	lbs 35,280	35,280	25,840	21,890	19,090	18,210	16,290	15,400											
115 ft 35m	35,280 lbs – 67 ft 16 000 kg – 20.4m	17,640 lbs – 115 ft 8 000 kg – 35m	lbs 35,280	35,280	26,700	22,595	19,710	18,700													
98 ft 30m	35,280 lbs – 72 ft 16 000 kg – 22m	17,640 lbs – 98 ft 8 000 kg – 30m	lbs 35,280	35,280	29,210	24,700															

*** IMPORTANT!** The radius and capacity charts on this page apply specifically to the *reinforced* version of the WK 315 R Wolff tower crane. Contact Morrow Equipment to verify if these radius and capacity charts apply to your specific machine.

Capacity



SPECIFICATIONS

Tower crane model WK 315 R

Hoist Speed and Capacity

Hoist Unit	Hw 8 85 3		2-Part Line				
114 hp (85.0 kW) AC hoist unit 3-speed gearbox Remote-controlled gear shifting Eddy current brake	Gear	Capacity	Line Speed		Capacity	Line Speed	
	1	17,640 lbs	@	170 fpm	8 000 kg	@ 52 m/min	
	2	9,300 lbs	@	282 fpm	4 220 kg	@ 86 m/min	
	3	2,000 lbs	@	826 fpm	905 kg	@ 252 m/min	
	4-Part Line						
	1	35,280 lbs	@	85 fpm	16 000 kg	@ 26 m/min	
	2	18,600 lbs	@	141 fpm	8 440 kg	@ 43 m/min	
3	4,000 lbs	@	413 fpm	1 810 kg	@ 126 m/min		

NOTE! Capacities and line speeds indicated will vary depending on the amount of hoist rope installed. This crane model may be equipped with a hoist unit other than that specified in data above. To verify, check the serial number of the crane and refer to the Wolffkran 315 R Operation Manual for additional information.

Motor Information

Drive Unit	Horsepower	Kilowatts	Speed	
Trolley (Tw 76) 2-Part Line	9.8 hp	7.3 kW	12 - 120/236 fpm	3.6 - 36/72 m/min
Trolley (Tw 76) 4-Part Line	9.8 hp	7.3 kW	6 - 60/118 fpm	1.8 - 18/36 m/min
Swing (Dw-SG)	2 x 9.8 hp	2 x 7.3 kW	0.9 rpm	
Rail Travel (UW 260.2)	2 x 8.8 hp	2 x 6.6 kW	98.5 fpm	30 m/min
Rail Travel (UW 260.3)	4 x 6.4 hp	4 x 4.8 kW	98.5 fpm	30 m/min

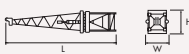
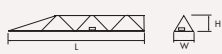

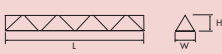

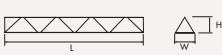

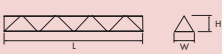

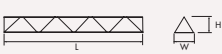



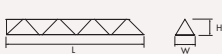

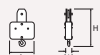
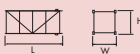
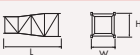
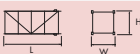
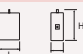
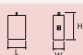
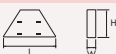






Power Requirements

480 Volts — 3-phase — 60-cycle — 200 Amperes service with **114 hp** (85 kW) hoist unit

Specifications subject to change without notice. For other configurations and specifications, contact Morrow Equipment.

Component List

Wolffkran 315 R

Description	Dimensions L x W x H	Weight	Description	Dimensions L x W x H	Weight
Turntable & Tower Top without Cab	 37'-8" x 7'-11" x 8'-10" 11.5m x 2.4m x 2.68m	28,650 lbs 13 435 kg	Jib Section ①	 32'-10" x 6'-3" x 6'-4" 10.0m x 1.9m x 1.93m	6,750 lbs 3 060 kg
Tower Top	 25'-4" x 6'-7" x 6'-11" 7.7m x 2.0m x 2.1m	6,615 lbs 3 000 kg	Jib Section ①	 34'-2" x 6'-1" x 6'-4" 10.42m x 1.85m x 1.93m	4,650 lbs 2 110 kg
Turntable with Slewing Motors	 18'-7" x 7'-11" x 8'-10" 5.47m x 2.4m x 2.68m	22,035 lbs 10 435 kg	Jib Section ②	 34'-2" x 6'-1" x 6'-4" 10.42m x 1.85m x 1.93m	4,100 lbs 1 860 kg
Turntable Upper Part ¹	 7'-3" x 7'-11" x 8'-10" 2.2m x 2.4m x 2.68m	12,675 lbs 5 750 kg	Jib Section ③	 34'-2" x 6'-1" x 6'-4" 10.42m x 1.85m x 1.93m	5,300 lbs 2 405 kg
Turntable Lower Part ²	 11'-4" x 6'-11" x 8'-2" 3.45m x 2.1m x 2.5m	9,360 lbs 4 245 kg	Jib Section ④	 34'-2" x 6'-1" x 6'-4" 10.42m x 1.85m x 1.93m	3,550 lbs 1 610 kg
Counterjib with Hoist Unit ³	 53'-3" x 8'-2" x 5'-11" 16.2m x 2.5m x 1.8m	25,400 lbs 11 520 kg	Jib Section ⑤	 17'-2" x 6'-1" x 6'-4" 5.23m x 1.85m x 1.93m	1,900 lbs 860 kg
Operator Cab with Access Platform	 5'-4" x 3'-7" x 7'-11" 1.62m x 1.1m x 2.4m	1,450 lbs 660 kg	Jib Section ⑥	 34'-2" x 6'-1" x 6'-4" 10.42m x 1.85m x 1.93m	2,650 lbs 1 200 kg
Trolley	 7'-2" x 5'-7" x 3'-4" 2.2m x 1.71m x 1.01m	1,450 lbs 660 kg	Jib Assembly ⁴ 197-ft (60m)	①②③④⑥ 197'-11" x 6'-3" x 6'-4" 60.3m x 1.9m x 1.93m	31,950 lbs 14 490 kg
Hook Block 2/4-part Combination	 4'-0" x 1'-0" x 6'-5" 1.22m x 0.3m x 1.96m	2,000 lbs 905 kg	Jib Assembly ⁴ 180-ft (55m)	①②③⑤⑥ 181'-5" x 6'-3" x 6'-4" 55.3m x 1.9m x 1.93m	30,200 lbs 13 700 kg
Tower Section TV 20	 15'-11" x 6'-8" x 7'-4" 4.84m x 2.03m x 2.24m	6,600 lbs 3 000 kg	Jib Assembly ⁴ 164-ft (50m)	①③④⑥ 165'-0" x 6'-3" x 6'-4" 50.3m x 1.83m x 1.93m	27,050 lbs 12 270 kg
Transition Section TVUE 20	 15'-11" x 8'-3" x 8'-3" 4.84m x 2.51m x 2.51m	6,435 lbs 2 920 kg	Jib Assembly ⁴ 148-ft (45m)	①③⑤⑥ 148'-7" x 6'-3" x 6'-4" 45.3m x 1.9m x 1.93m	25,350 lbs 11 500 kg
Tower Section TV 25	 15'-11" x 8'-3" x 8'-3" 4.84m x 2.51m x 2.51m	6,920 lbs 3 140 kg	Jib Assembly ⁴ 131-ft (40m)	①③④ 132'-2" x 6'-3" x 6'-4" 40.3m x 1.9m x 1.93m	24,400 lbs 11 070 kg
Counterweight Block A	 4'-10" x 2'-0" x 6'-11" 1.46m x 0.61m x 2.1m	8,820 lbs 4 000 kg	Jib Assembly ⁴ 115-ft (35m)	①③⑤ 115'-10" x 6'-3" x 6'-4" 35.3m x 1.9m x 1.93m	22,700 lbs 10 300 kg
Counterweight Block B	 4'-10" x 1'-2" x 6'-11" 1.46m x 0.37m x 2.1m	5,290 lbs 2 400 kg	Jib Assembly ⁴ 98-ft (30m)	③④ 99'-5" x 6'-3" x 6'-4" 30.3m x 1.9m x 1.93m	18,950 lbs 8 595 kg
Central Ballast Block A (for KRE/UW260.2, UW260.3)	 12'-6" x 1'-8" x 5'-2" 3.8m x 0.5m x 1.57m	11,025 lbs 5 000 kg	Jib Assembly ⁴ 82-ft (25m)	③⑤ 83'-0" x 6'-3" x 6'-4" 25.3m x 1.9m x 1.93m	17,300 lbs 7 845 kg
Central Ballast Block B (for KRE/UW260.2, UW260.3)	 12'-6" x 10" x 5'-2" 3.8m x 0.25m x 1.57m	5,512 lbs 2 500 kg	Top Climbing Unit KWH 20.3	 34'-7" x 8'-4" x 9'-0" 10.54m x 2.53m x 2.75m	17,635 lbs 8 000 kg
Undercarriage UW 260.2	 21'-1" x 26'-0" x 16'-2" 6.42m x 7.93m x 4.93m	30,700 lbs 13 930 kg	Top Climbing Unit KWH 20.5	 34'-7" x 8'-4" x 9'-0" 10.54m x 2.53m x 2.75m	23,485 lbs 10 650 kg
Undercarriage UW 260.3	 21'-1" x 26'-0" x 16'-2" 6.42m x 7.93m x 4.93m	37,800 lbs 17 190 kg	Crossframe KRE 260.2	 19'-8" x 19'-8" x 14'-2" 6.0m x 6.0m x 4.32m	24,000 lbs 10 885 kg

¹ Includes race bearing, gearboxes and motors.

² Does not include race bearing.

³ Does not include wire rope.

⁴ Jib assemblies include jib sections, pendants, trolley and trolley rope.

NOTE: Weights and dimensions are approximate. Scale components before lifting.



Morrow Equipment
C O M P A N Y, L. L. C.

3218 Pringle Road SE • P O Box 3306 • Salem, Oregon 97302-0306 USA
Tel. 503.585.5721 • Fax. 503.363.1172 • www.morrowequipment.com

The American home of
LIEBHERR

Atlanta, GA • Charlotte, NC • Chicago, IL • Denver, CO • Honolulu, HI • Houston, TX • Los Angeles, CA • Las Vegas, NV
Millwood, NY • St. Louis, MO • San Francisco, CA • Dallas, TX • Seattle, WA • Miami, FL • Tampa, FL • Washington, DC
Sydney, Australia • Wellington, New Zealand • Vancouver, BC, Canada • Toronto, ON, Canada • México DF, México