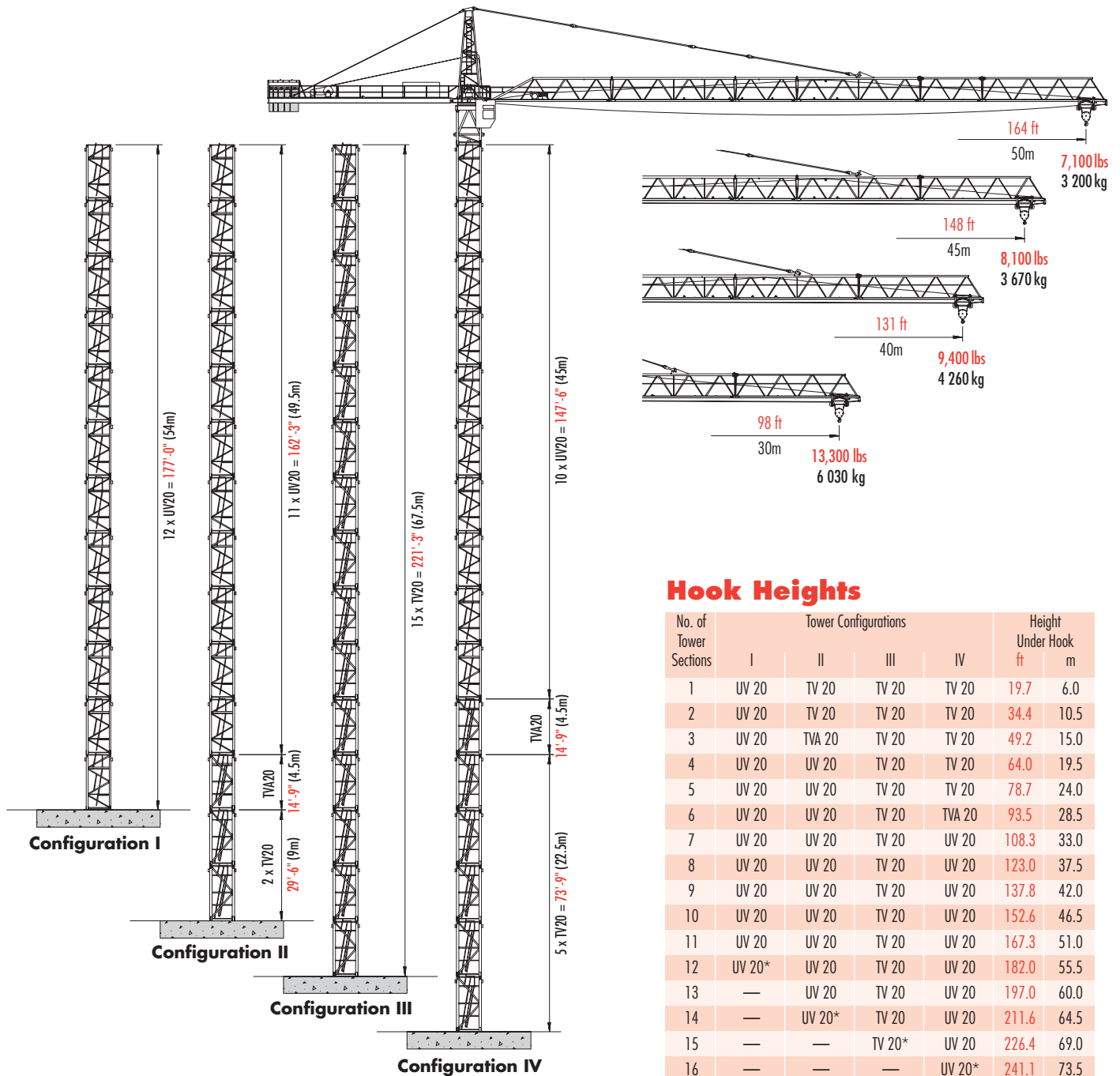


Wolffkran 184 SL

TOWER CRANE



FREESTANDING
(stationary)

* Lower top climbing unit to base of crane prior to operating crane at maximum hook height.

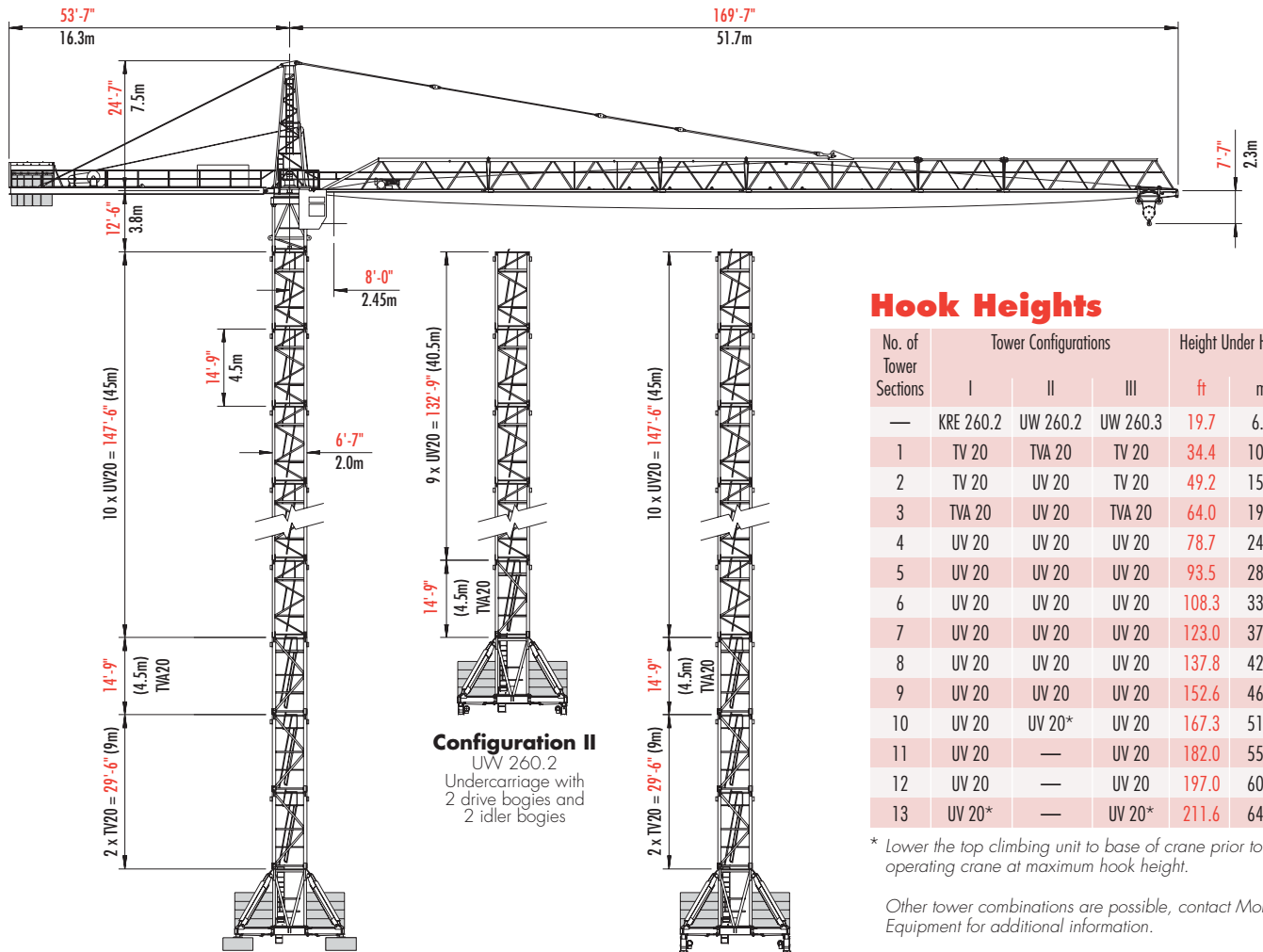
Other tower combinations possible, contact Morrow Equipment for additional information.



Morrow Equipment

Configurations

Wolffkran 184 SL



Hook Heights

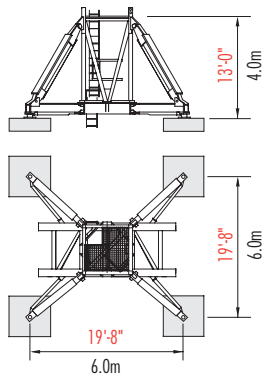
No. of Tower Sections	Tower Configurations			Height Under Hook	
	I	II	III	ft	m
—	KRE 260.2	UW 260.2	UW 260.3	19.7	6.0
1	TV 20	TVA 20	TV 20	34.4	10.5
2	TV 20	UV 20	TV 20	49.2	15.0
3	TVA 20	UV 20	TVA 20	64.0	19.5
4	UV 20	UV 20	UV 20	78.7	24.0
5	UV 20	UV 20	UV 20	93.5	28.5
6	UV 20	UV 20	UV 20	108.3	33.0
7	UV 20	UV 20	UV 20	123.0	37.5
8	UV 20	UV 20	UV 20	137.8	42.0
9	UV 20	UV 20	UV 20	152.6	46.5
10	UV 20	UV 20*	UV 20	167.3	51.0
11	UV 20	—	UV 20	182.0	55.5
12	UV 20	—	UV 20	197.0	60.0
13	UV 20*	—	UV 20*	211.6	64.5

* Lower the top climbing unit to base of crane prior to operating crane at maximum hook height.

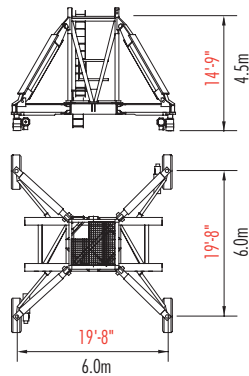
Other tower combinations are possible, contact Morrow Equipment for additional information.

Configuration I
KRE 260.2
Cross Frame

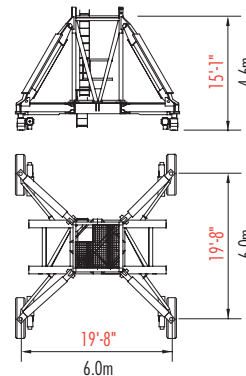
Configuration III
UW 260.3
Undercarriage with
4 drive bogies



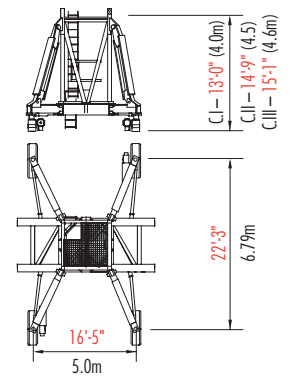
Configuration I
KRE 260.2 Cross Frame



Configuration II
UW 260.2 Undercarriage



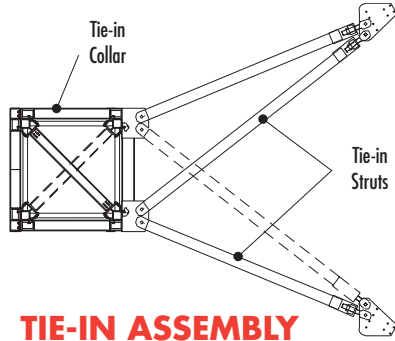
Configuration III
UW 260.3 Undercarriage



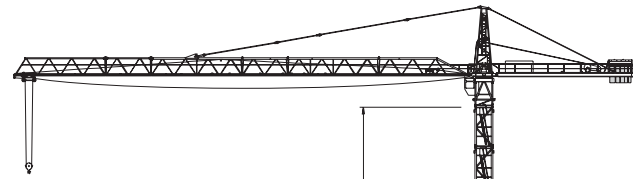
Alternate Configuration
for KRE 260.2, UW 260.2 & UW 260.3 available with restrictions.
Contact Morrow Equipment for additional information.

Configurations

Wolffkran 184 SL



TIE-IN ASSEMBLY
Plan View

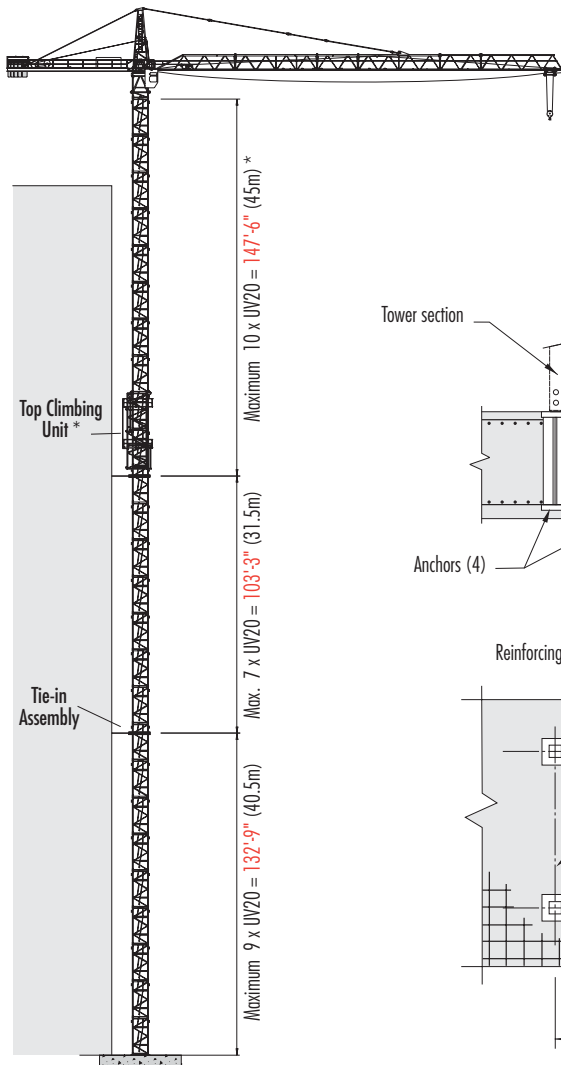


NOTE! If hook height exceeds 330 ft (100.0m), the number of tower sections above uppermost tie-in location **MUST** be reduced by 2 tower sections.

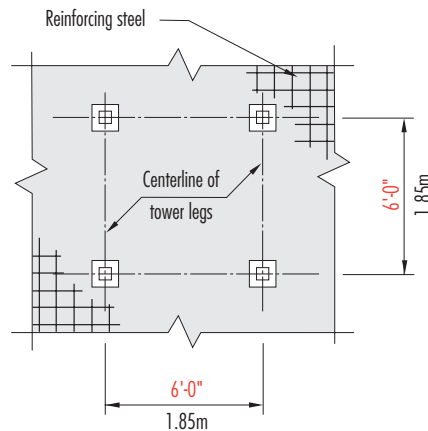
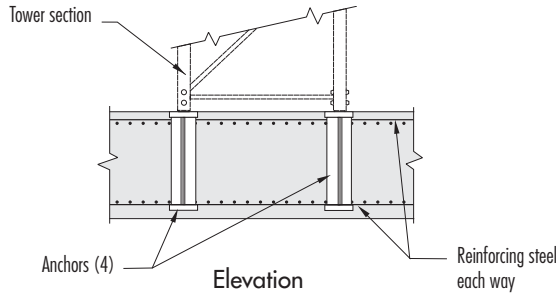
* Lower the top climbing unit to uppermost tie-in location prior to operating crane at maximum hook height.

NOTE! Consult Morrow for specific information regarding alternate foundation details, dimensions and reaction forces.

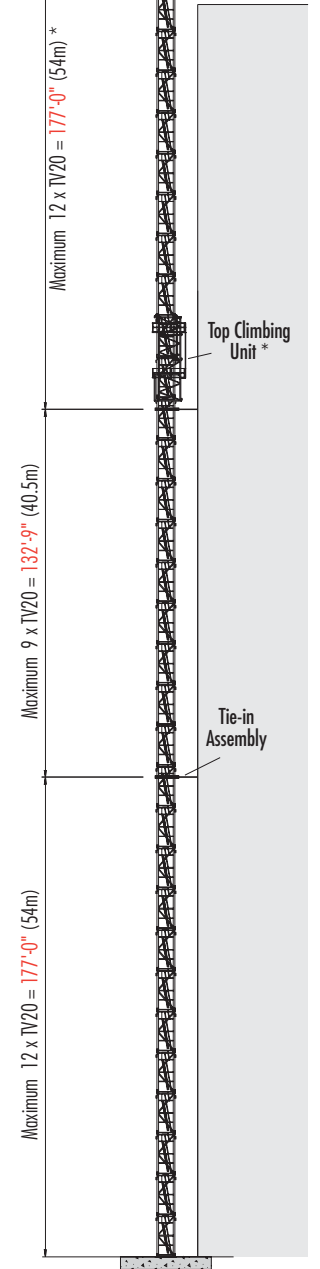
Please refer to crane's operation manual before erecting, operating and dismantling crane.



TOP CLIMBING
with UV 20 Tower Sections
(Tied to Structure)



FOUNDATION
(Concrete Slab)



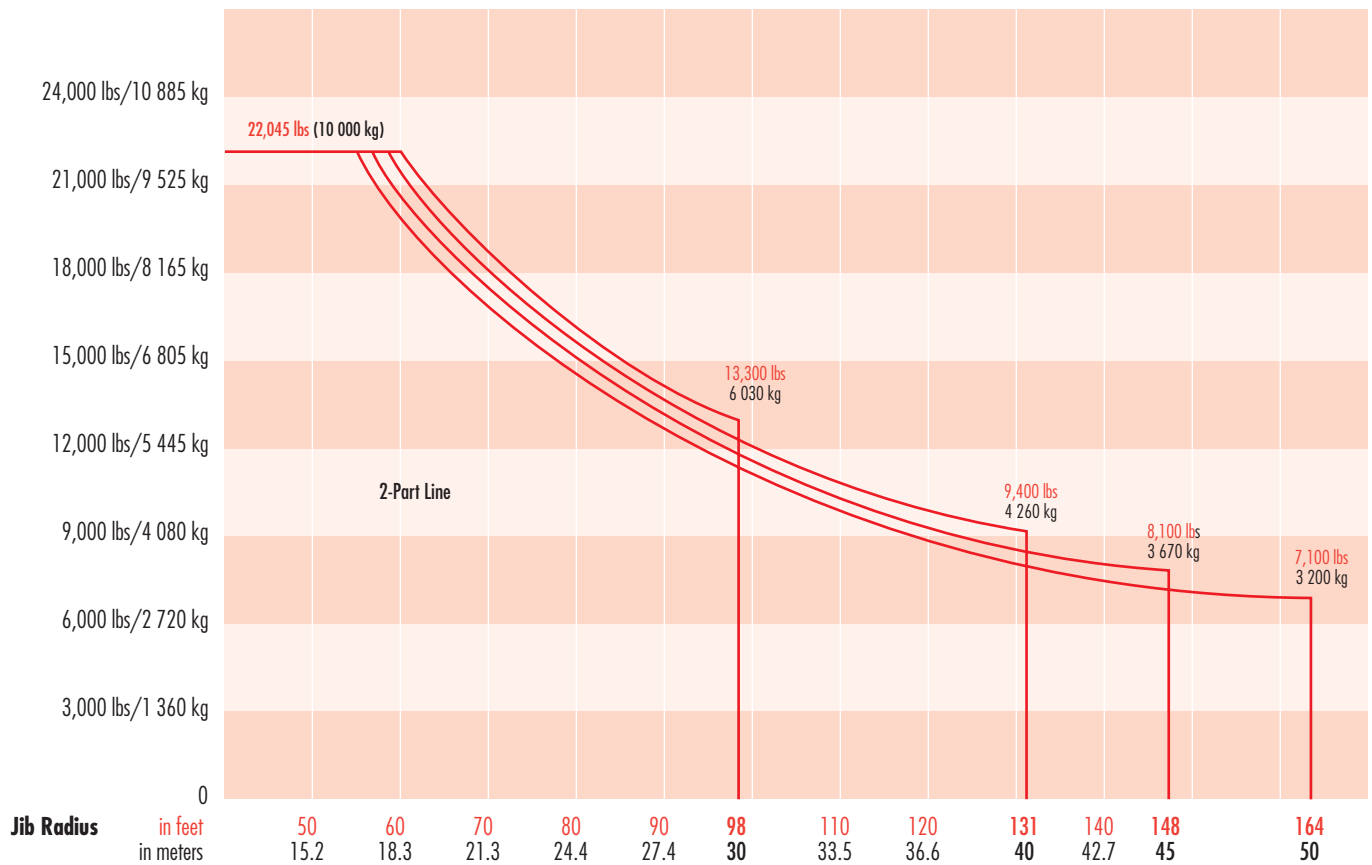
TOP CLIMBING
with TV 20 Tower Sections
(Tied to Structure)

Radius & Capacities

Wolffkran 184 SL

Hook Radius	2-Part Line Max Capacity – Radius	ft m	40	50	60	70	80	90	98	110	115	120	125	131	140	148	155	160	164	
			12.2	15.2	18.3	21.3	24.4	27.4	30	33.5	35	36.6	38.1	40	42.7	45	47.2	48.8	50	
164 ft 50m	22,045 lbs – 57 ft 10 000 kg – 17.4m	lbs kg	22,045 10 000	22,045 10 000	20,900 9 480	18,100 8 210	15,805 7 170	14,000 6 350	12,700 5 760	11,200 5 080	10,605 4 810	10,010 4 540	9,500 4 310	8,905 4 040	8,200 3 720	7,695 3 490	7,295 3 310	7,185 3 260	7,100 3 200	
148 ft 45m	22,045 lbs – 58 ft 10 000 kg – 17.7m	lbs kg	22,045 10 000	22,045 10 000	21,210 9 620	18,495 8 390	16,205 7 350	14,310 6 490	13,005 5 900	11,400 5 170	10,845 4 920	10,295 4 670	9,810 4 450	9,195 4 170	8,510 3 860	8,100 3 670				
131 ft 40m	22,045 lbs – 59 ft 10 000 kg – 18m	lbs kg	22,045 10 000	22,045 10 000	21,605 9 800	18,695 8 480	16,490 7 480	14,595 6 620	13,205 5 990	11,595 5 260	11,000 4 990	10,405 4 720	9,965 4 520	9,400 4 260						
98 ft 30m	22,045 lbs – 60 ft 10 000 kg – 18.3m	lbs kg	22,045 10 000	22,045 10 000	22,045 10 000	19,005 8 620	16,800 7 620	14,795 6 710	13,300 6 030											

Capacity



SPECIFICATIONS

Tower crane model WK 184 SL

Hoist Speed and Capacity

Hoist Unit	Hw 10 90 3	2-Part Line				
		Gear	Capacity	Line Speed	Capacity	Line Speed
138 hp (103.0 kW) AC hoist unit 3-speed gearbox Remote-controlled gear shifting Eddy current brake		1	22,045 lbs @	157 fpm	10 000 kg @	48 m/min
		2	9,920 lbs @	334 fpm	4 500 kg @	102 m/min
		3	3,305 lbs @	787 fpm	1 500 kg @	240 m/min

NOTE! Capacities and line speeds indicated will vary depending on the amount of hoist rope installed. This crane model may be equipped with a hoist unit other than that specified in data above. To verify, check the serial number of the crane and refer to the *Wolffkran 184 SL Operation Manual* for additional information.

Motor Information

Drive Unit	Horsepower	Kilowatts	Speed	
Trolley (Tw 50 FG)	8.6 hp	6.4 kW	49/197 fpm	15/60 m/min
Swing (Dw-FG)	2 x 8.8 hp	2 x 6.6 kW	0.9 rpm	
Rail Travel (UW 260.2)	2 x 8.8 hp	2 x 6.6 kW	98.5 fpm	30 m/min
Rail Travel (UW 260.3)	4 x 6.4 hp	4 x 4.8 kW	98.5 fpm	30 m/min

Power Requirements

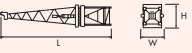
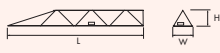

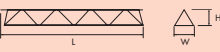
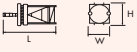
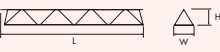
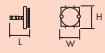
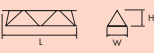
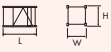
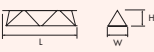

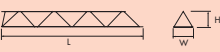
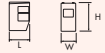
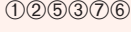
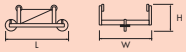

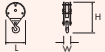
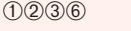

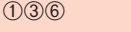
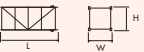

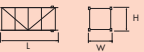

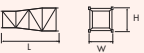

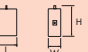

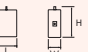

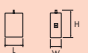

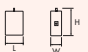

480 Volts — 3-phase — 60-cycle — 200 Amperes service with 138 hp (103 kW) hoist unit

Specifications subject to change without notice. For other configurations and specifications, contact Morrow Equipment.

Morrow Equipment Co., L.L.C.

Component List

Wolffkran 184 SL

Description	Dimensions L x W x H	Weight	Description	Dimensions L x W x H	Weight
Turntable & Tower Top without Cab	 37'-2" x 7'-10" x 10'-0" 11.3m x 2.4m x 3.05m	21,275 lbs 9 650 kg	Jib Section ①	 34'-10" x 6'-0" x 7'-7" 10.6m x 1.83m x 2.32m	5,070 lbs 2 300 kg
Tower Top	 24'-0" x 6'-9" x 6'-9" 7.32m x 2.06m x 2.06m	4,915 lbs 2 230 kg	Jib Section ②	 34'-2" x 6'-0" x 6'-11" 10.42m x 1.83m x 2.1m	4,190 lbs 1 900 kg
Turntable with Slewing Motors	 14'-1" x 7'-10" x 10'-0" 4.3m x 2.4m x 3.05m	16,360 lbs 7 420 kg	Jib Section ③	 34'-2" x 6'-0" x 6'-11" 10.42m x 1.83m x 2.1m	3,640 lbs 1 650 kg
Turntable Upper Part ¹	 3'-2" x 7'-10" x 10'-0" 0.97m x 2.4m x 3.05m	9,040 lbs 4 100 kg	Jib Section ⑤	 17'-8" x 6'-0" x 6'-11" 5.4m x 1.83m x 2.1m	1,520 lbs 690 kg
Turntable Lower Part ²	 10'-11" x 7'-2" x 8'-2" 3.34m x 2.18m x 2.48m	7,320 lbs 3 320 kg	Jib Section ⑦	 17'-8" x 6'-0" x 6'-11" 5.4m x 1.83m x 2.1m	1,520 lbs 690 kg
Counterjib with Hoist Unit ³	 50'-11" x 9'-6" x 6'-3" 15.52m x 2.9m x 1.91m	22,045 lbs 10 000 kg	Jib Section ⑥	 34'-6" x 6'-0" x 6'-11" 10.5m x 1.83m x 2.1m	3,085 lbs 1 400 kg
Operator Cab with Access Platform	 5'-3" x 3'-4" x 7'-3" 1.6m x 1.02m x 2.21m	1,300 lbs 590 kg	Jib Assembly ⁴ 164-ft (50m)	 ①②⑤③⑦⑥	20,300 lbs 9 210 kg
Trolley	 6'-11" x 6'-8" x 2'-8" 2.11m x 2.03m x 0.81m	900 lbs 410 kg	Jib Assembly ⁴ 148-ft (45m)	 ①②⑤③⑥	19,100 lbs 8 665 kg
Hook Block 2-part	 2'-4" x 0'-7" x 3'-10" 0.72m x 0.18m x 1.17m	925 lbs 420 kg	Jib Assembly ⁴ 131-ft (40m)	 ①②③⑥	17,500 lbs 7 940 kg
Tower Section UV 20	 15'-10" x 6'-7" x 7'-4" 4.82m x 2.0m x 2.24m	4,300 lbs 1 950 kg	Jib Assembly ⁴ 98-ft (30m)	 ①③⑥	13,300 lbs 6 035 kg
Tower Section TV 20	 15'-11" x 6'-8" x 7'-4" 4.84m x 2.03m x 2.24m	6,600 lbs 3 000 kg	Top Climbing Unit KWH 20.2	 29'-6" x 9'-4" x 9'-4" 9.0m x 2.85m x 2.85m	14,740 lbs 6 685 kg
Transition Section TVA 20	 15'-10" x 6'-7" x 7'-4" 4.82m x 2.0m x 2.24m	6,800 lbs 3 085 kg	Top Climbing Unit KWH 20.S	 34'-7" x 8'-4" x 9'-0" 10.54m x 2.53m x 2.75m	23,485 lbs 10 650 kg
Transition Section TVUE 20	 15'-11" x 8'-3" x 8'-3" 4.84m x 2.51m x 2.51m	7,935 lbs 3 600 kg	Undercarriage UW 260.2	 21'-1" x 26'-0" x 16'-2" 6.42m x 7.93m x 4.93m	30,700 lbs 13 930 kg
Counterweight Block A	 4'-11" x 2'-1" x 5'-11" 1.5m x 0.63m x 1.8m	9,200 lbs 4 175 kg	Undercarriage UW 260.3	 21'-1" x 26'-0" x 16'-2" 6.42m x 7.93m x 4.93m	37,800 lbs 17 190 kg
Counterweight Block B	 4'-11" x 1'-6" x 5'-11" 1.5m x 0.46m x 1.8m	6,620 lbs 3 000 kg	Crossframe KRE 260.2	 19'-8" x 19'-8" x 14'-2" 6.0m x 6.0m x 4.32m	24,000 lbs 10 885 kg
Counterweight Block C	 4'-11" x 1'-2" x 5'-11" 1.5m x 0.36m x 1.8m	5,050 lbs 2 290 kg	Central Ballast Block A (for KRE/UW260.2, UW260.3)	 12'-6" x 1'-8" x 5'-2" 3.8m x 0.5m x 1.57m	11,025 lbs 5 000 kg
Counterweight Block D	 4'-11" x 1'-1" x 5'-11" 1.5m x 0.33m x 1.8m	4,510 lbs 2 045 kg	Central Ballast Block B (for KRE/UW260.2, UW260.3)	 12'-6" x 10" x 5'-2" 3.8m x 0.25m x 1.57m	5,512 lbs 2 500 kg

¹ Includes race bearing, gearboxes and motors.

² Does not include race bearing.

³ Does not include wire rope.

⁴ Jib assemblies include jib sections, pendants, trolley and trolley rope.

NOTE: Weights and dimensions are approximate. Scale components before lifting.



Morrow Equipment
C O M P A N Y, L. L. C.

3218 Pringle Road SE • P O Box 3306 • Salem, Oregon 97302-0306 USA
Tel. 503.585.5721 • Fax. 503.363.1172 • www.morrowequipment.com

The American home of
LIEBHERR

Atlanta, GA • Charlotte, NC • Chicago, IL • Denver, CO • Honolulu, HI • Houston, TX • Los Angeles, CA • Las Vegas, NV
Millwood, NY • St. Louis, MO • San Francisco, CA • Dallas, TX • Seattle, WA • Miami, FL • Tampa, FL • Washington, DC
Sydney, Australia • Wellington, New Zealand • Vancouver, BC, Canada • Toronto, ON, Canada • México DF, México