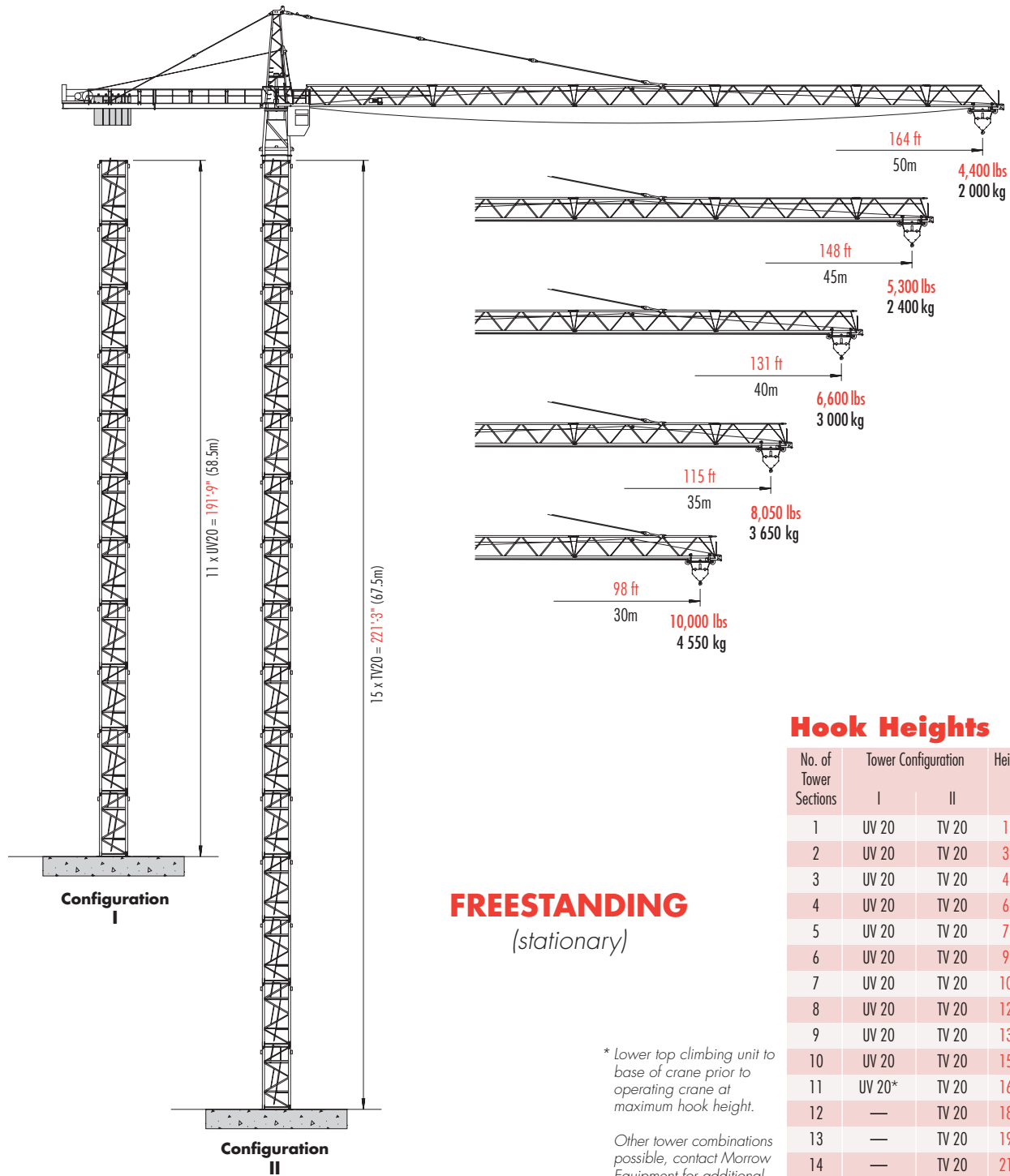


Wolffkran 148 SL

TOWER CRANE



Hook Heights

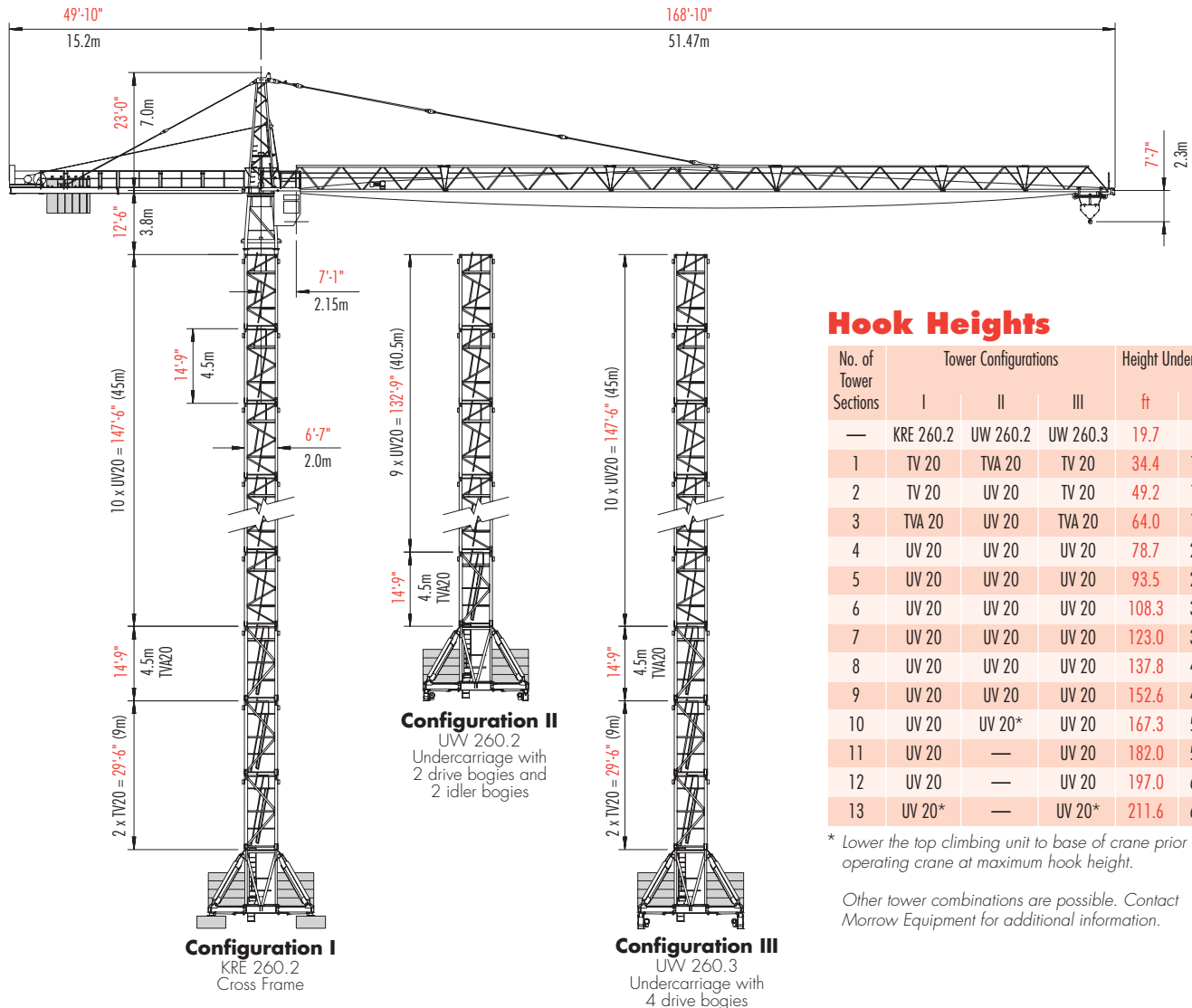
No. of Tower Sections	Tower Configuration		Height Under Hook	
	I	II	ft	m
1	UV 20	TV 20	19.7	6.0
2	UV 20	TV 20	34.4	10.5
3	UV 20	TV 20	49.2	15.0
4	UV 20	TV 20	64.0	19.5
5	UV 20	TV 20	78.7	24.0
6	UV 20	TV 20	93.5	28.5
7	UV 20	TV 20	108.3	33.0
8	UV 20	TV 20	123.0	37.5
9	UV 20	TV 20	137.8	42.0
10	UV 20	TV 20	152.6	46.5
11	UV 20*	TV 20	167.3	51.0
12	—	TV 20	182.0	55.5
13	—	TV 20	197.0	60.0
14	—	TV 20	211.6	64.5
15	—	TV 20*	226.4	69.0



Morrow Equipment

Configurations

Wolffkran 148 SL

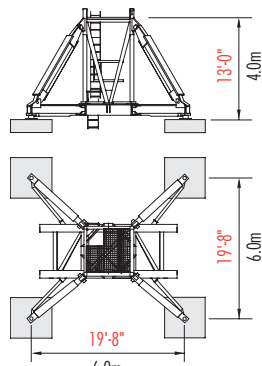


Hook Heights

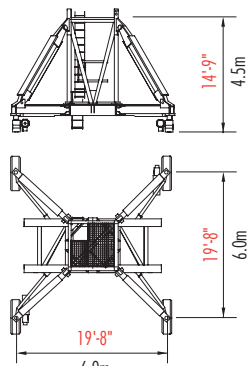
No. of Tower Sections	Tower Configurations			Height Under Hook	
	I	II	III	ft	m
—	KRE 260.2	UW 260.2	UW 260.3	19.7	6.0
1	TV 20	TVA 20	TV 20	34.4	10.5
2	TV 20	UV 20	TV 20	49.2	15.0
3	TVA 20	UV 20	TVA 20	64.0	19.5
4	UV 20	UV 20	UV 20	78.7	24.0
5	UV 20	UV 20	UV 20	93.5	28.5
6	UV 20	UV 20	UV 20	108.3	33.0
7	UV 20	UV 20	UV 20	123.0	37.5
8	UV 20	UV 20	UV 20	137.8	42.0
9	UV 20	UV 20	UV 20	152.6	46.5
10	UV 20	UV 20*	UV 20	167.3	51.0
11	UV 20	—	UV 20	182.0	55.5
12	UV 20	—	UV 20	197.0	60.0
13	UV 20*	—	UV 20*	211.6	64.5

* Lower the top climbing unit to base of crane prior to operating crane at maximum hook height.

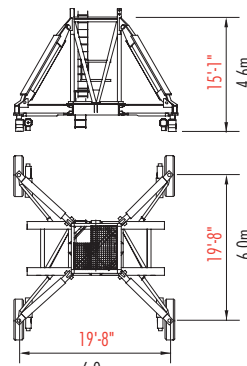
Other tower combinations are possible. Contact Morrow Equipment for additional information.



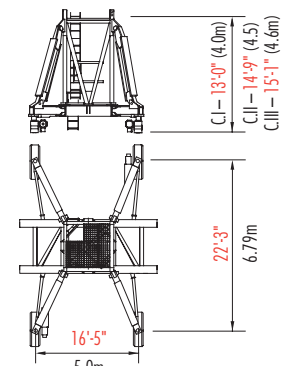
Configuration I
KRE 260.2 Cross Frame



Configuration II
UW 260.2 Undercarriage



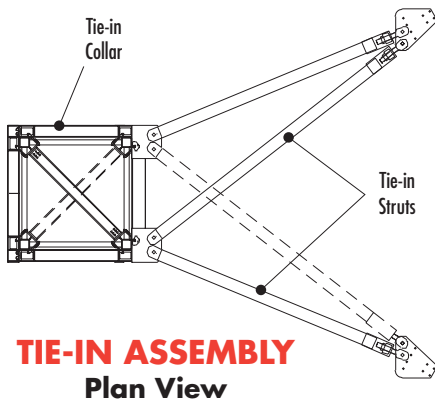
Configuration III
UW 260.3 Undercarriage



Alternate Configuration
for KRE 260.2, UW 260.2 & UW 260.3 available with restrictions. Contact Morrow Equipment for additional information.

Configurations

Wolffkran 148 SL

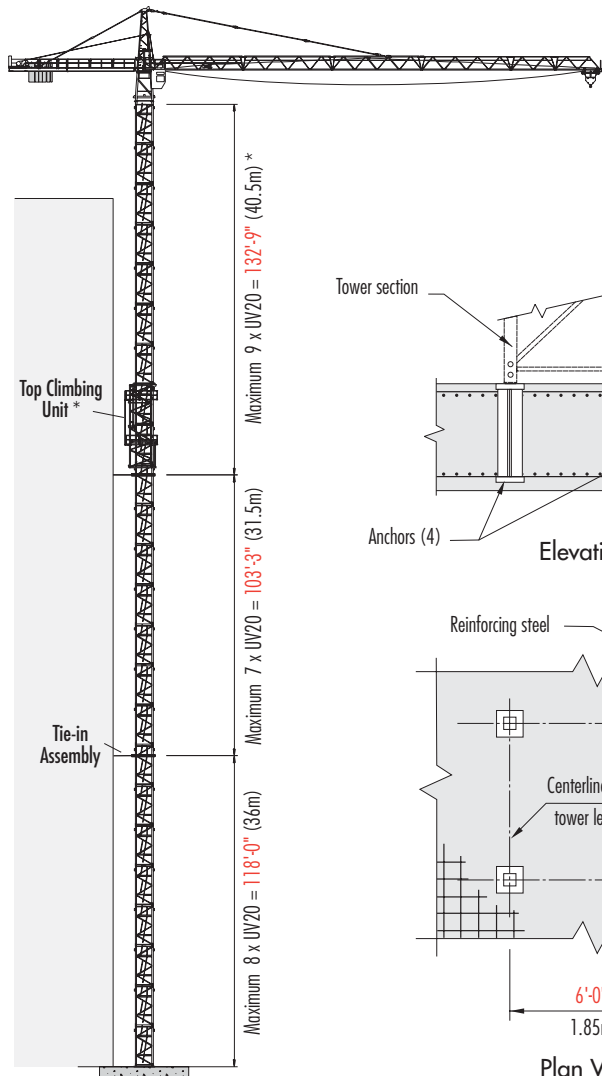


NOTE! If hook height exceeds 330 ft (100.0m), the number of tower sections above uppermost tie-in location **MUST** be reduced by 2 tower sections.

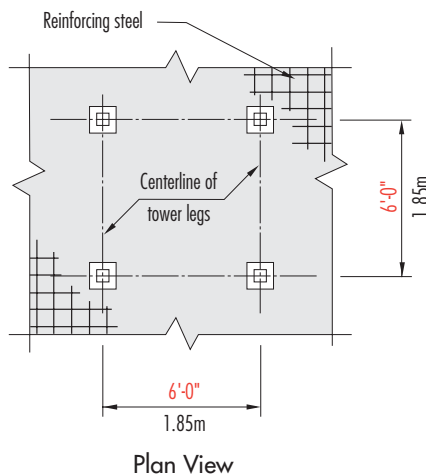
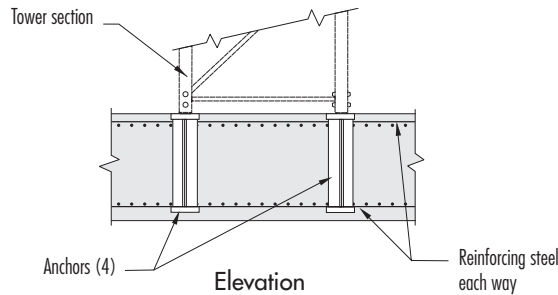
* Lower the top climbing unit to uppermost tie-in location prior to operating crane at maximum hook height.

NOTE! Consult Morrow for specific information regarding alternate foundation details, dimensions and reaction forces.

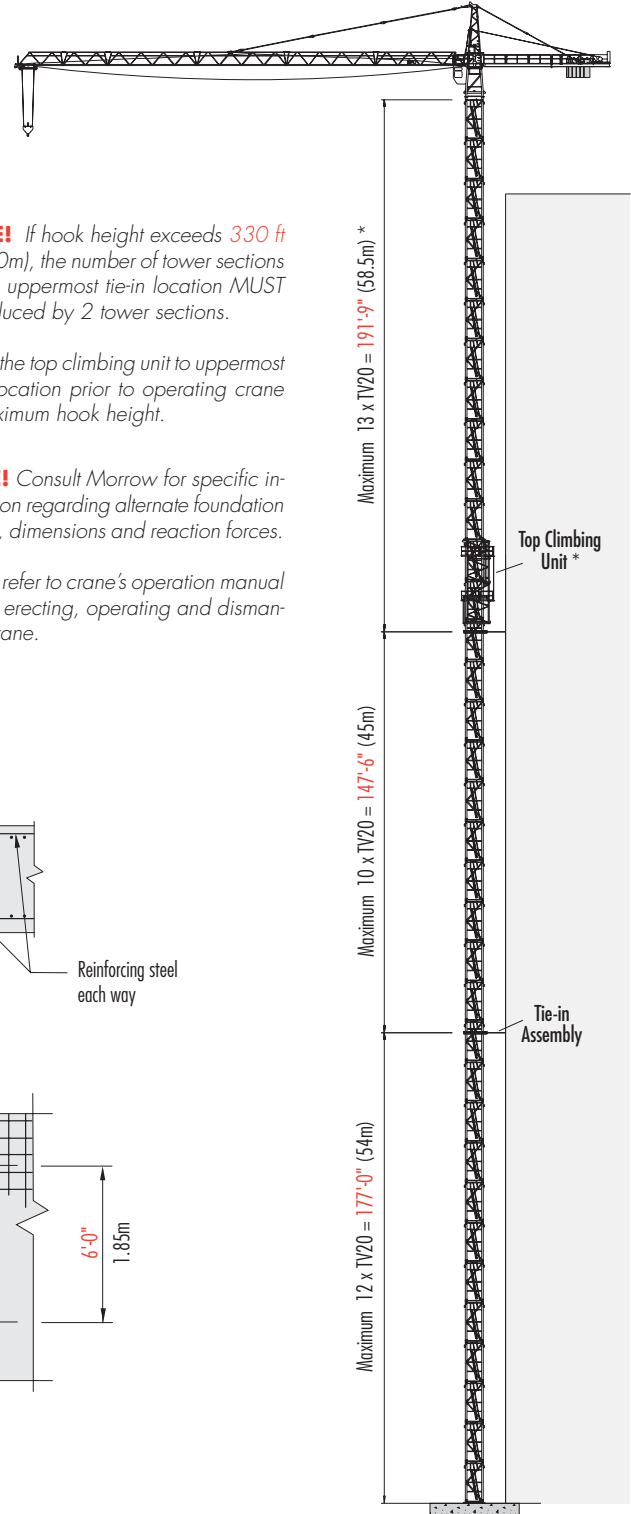
Please refer to crane's operation manual before erecting, operating and dismantling crane.



TOP CLIMBING
with UV 20 Tower Sections
(Tied to Structure)



FOUNDATION
(Concrete Slab)



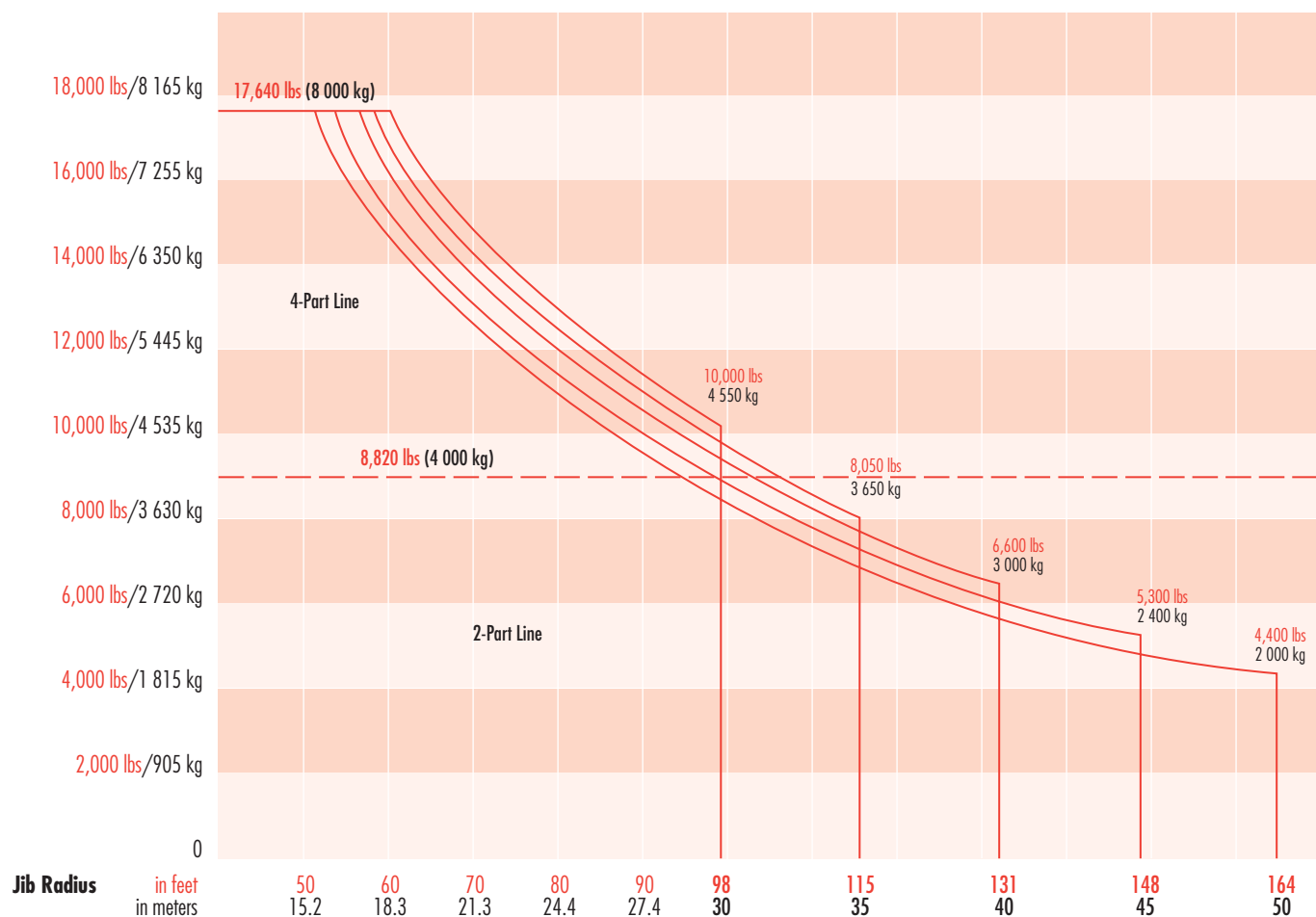
TOP CLIMBING
with TV 20 Tower Sections
(Tied to Structure)

Radius & Capacities

Wolffkran 148 SL

Hook Radius	4-Part Line		2-Part Line		ft	49	66	82	98	110	115	120	125	131	135	140	148	155	160	164
	Max Capacity – Radius	Max Capacity – Radius	ft	m																
164 ft 50m	17,640 lbs – 52 ft 8 000 kg – 15.9m	8,820 lbs – 96 ft 4 000 kg – 29.3m	lbs	m	17,640	13,700	10,580	8,510	7,405	7,055	6,700	6,395	5,950	5,800	5,490	5,095	4,740	4,495	4,400	2 000
148 ft 45m	17,640 lbs – 54 ft 8 000 kg – 16.4m	8,820 lbs – 98 ft 4 000 kg – 30m	lbs	m	17,640	14,110	10,935	8,820	7,695	7,310	7,010	6,635	6,175	5,995	5,710	5,300				
131 ft 40m	17,640 lbs – 57 ft 8 000 kg – 17.3m	8,820 lbs – 104 ft 4 000 kg – 31.7m	lbs	m	17,640	14,990	11,640	9,415	8,200	7,805	7,405	7,035	6,600							
115 ft 35m	17,640 lbs – 58 ft 8 000 kg – 17.7m	8,820 lbs – 107 ft 4 000 kg – 32.6m	lbs	m	17,640	15,410	11,970	9,680	8,510	8,050										
98 ft 30m	17,640 lbs – 60 ft 8 000 kg – 18.2m	8,820 lbs – 98 ft 4 000 kg – 30m	lbs	m	17,640	15,900	12,400	10,000												

Capacity



SPECIFICATIONS

Tower crane model WK 148 SL

Hoist Speed and Capacity

Hoist Unit	Hw 4 76 3	2-Part Line					
		Gear	Capacity	Line Speed	Capacity	Line Speed	
102 hp (76.0 kW) AC hoist unit 3-speed gearbox Remote-controlled gear shifting Eddy current brake		1	8,820 lbs @	290 fpm	4 000 kg @	88 m/min	
		2	6,500 lbs @	380 fpm	2 950 kg @	116 m/min	
		3	3,400 lbs @	640 fpm	1 540 kg @	194 m/min	
		4-Part Line					
		1	17,640 lbs @	145 fpm	8 000 kg @	44 m/min	
		2	13,000 lbs @	190 fpm	5 900 kg @	58 m/min	
		3	6,800 lbs @	320 fpm	3 080 kg @	97 m/min	

NOTE! Capacities and line speeds indicated will vary depending on the amount of hoist rope installed. This crane model may be equipped with a hoist unit other than that specified in data above. To verify, check the serial number of the crane and refer to the *Wolffkran 148 SL Operation Manual* for additional information.

Motor Information

Drive Unit	Horsepower	Kilowatts	Speed	
Trolley (Tw 50 FG)	6.0 hp	4.5 kW	79/156/315 fpm	24/48/96 m/min
Swing (Dw-FG)	2 x 6.2 hp	2 x 4.6 kW	0.9 rpm	
Rail Travel (UW 260.2)	2 x 8.8 hp	2 x 6.6 kW	98.5 fpm	30 m/min
Rail Travel (UW 260.3)	4 x 6.4 hp	4 x 4.8 kW	98.5 fpm	30 m/min

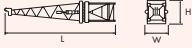
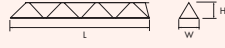


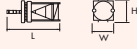
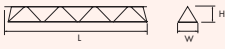

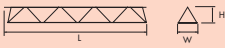
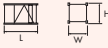




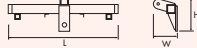
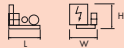

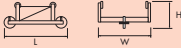
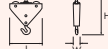
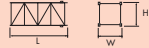
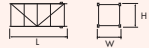

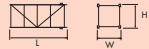

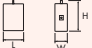
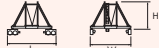
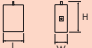





Power Requirements

480 Volts — 3-phase — 60-cycle — 200 Amperes service with 102 hp (76 kW) hoist unit

Specifications subject to change without notice. For other configurations and specifications, contact Morrow Equipment.

Component List

Wolffkran 148 SL

Description	Dimensions L x W x H	Weight	Description	Dimensions L x W x H	Weight
Turntable & Tower Top without Cab	 36'-2" x 7'-1" x 7'-11" 11.03m x 2.16m x 2.4m	16,040 lbs 7 275 kg	Jib Section ①	 33'-5" x 5'-3" x 6'-1" 10.19m x 1.6m x 1.86m	3,725 lbs 1 690 kg
Tower Top	 23'-0" x 5'-10" x 6'-7" 7.01m x 1.77m x 1.98m	4,290 lbs 1 945 kg	Jib Section ②	 33'-6" x 5'-1" x 5'-8" 10.22m x 1.56m x 1.72m	2,945 lbs 1 335 kg
Turntable with Slewing Motors	 16'-2" x 6'-11" x 8'-0" 4.93m x 2.11m x 2.44m	11,750 lbs 5 330 kg	Jib Section ③	 33'-8" x 5'-1" x 5'-5" 10.26m x 1.56m x 1.64m	3,430 lbs 1 555 kg
Turntable Upper Part ¹	 4'-8" x 6"-11" x 7'-6" 1.42m x 2.11m x 2.29m	5,250 lbs 2 380 kg	Jib Section ④	 33'-8" x 5'-1" x 5'-2" 10.26m x 1.56m x 1.57m	2,865 lbs 1 300 kg
Turntable Lower Part ²	 11'-7" x 7'-1" x 8'-0" 3.54m x 2.16m x 2.44m	6,500 lbs 2 950 kg	Jib Section ⑤	 17'-2" x 5'-1" x 5'-2" 5.22m x 1.56m x 1.57m	1,400 lbs 635 kg
Counterjib Section #1	 25'-4" x 5'-2" x 1'-10" 7.72m x 1.57m x 0.56m	3,030 lbs 1 375 kg	Jib Section ⑥	 17'-0" x 5'-1" x 5'-2" 5.19m x 1.56m x 1.57m	1,180 lbs 530 kg
Counterjib - Section #2 w/Fixed Counterweight	 21'-8" x 7'-11" x 2'-3" 6.6m x 2.41m x 0.69m	7,330 lbs 3 325 kg	Jib Tip	 6'-5" x 3'-11" x 1'-7" 1.96m x 1.2m x 0.48m	270 lbs 120 kg
Hoist Unit — Hw 4 76 3 (102 hp/76 kW) ³	 7'-1" x 10'-6" x 5'-1" 2.16m x 3.2m x 1.55m	7,000 lbs 3 175 kg	Jib Assembly ⁴ 164-ft (50m)	①②③④⑤⑥ 165'-6" x 5'-3" x 6'-1" 50.44m x 1.6m x 1.86m	18,700 lbs 8 480 kg
Operator Cab	 5'-8" x 3'-4" x 7'-3" 1.73m x 1.02m x 2.21m	1,000 lbs 455 kg	Jib Assembly ⁴ 148-ft (45m)	①②③④⑤ 149'-1" x 5'-3" x 6'-1" 45.44m x 1.6m x 1.86m	17,500 lbs 7 940 kg
Trolley	 6'-11" x 5'-11" x 2'-8" 2.11m x 1.8m x 0.81m	660 lbs 300 kg	Jib Assembly ⁴ 131-ft (40m)	①②③④ 132'-8" x 5'-3" x 6'-1" 40.44m x 1.6m x 1.86m	16,100 lbs 7 305 kg
Hook Block 2/4-part Combination	 3'-9" x 7" x 5'-0" 1.14m x 0.18m x 1.52m	890 lbs 405 kg	Jib Assembly ⁴ 115-ft (35m)	①②③⑤ 116'-4" x 5'-3" x 6'-1" 35.44m x 1.6m x 1.86m	14,600 lbs 6 625 kg
Tower Section UV 20	 15'-10" x 6'-7" x 7'-4" 4.82m x 2.0m x 2.24m	4,300 lbs 1 950 kg	Jib Assembly ⁴ 98-ft (30m)	①②③ 99'-11" x 5'-3" x 6'-1" 30.44m x 1.6m x 1.86m	13,300 lbs 6 055 kg
Tower Section TV 20	 15'-11" x 6'-8" x 7'-4" 4.84m x 2.03m x 2.24m	6,600 lbs 3 000 kg	Top Climbing Unit KWH 20.2	 29'-6" x 9'-4" x 9'-4" 9.0m x 2.85m x 2.85m	14,740 lbs 6 685 kg
Transition Section TVA 20	 15'-10" x 6'-7" x 7'-4" 4.82m x 2.0m x 2.24m	6,800 lbs 3 085 kg	Top Climbing Unit KWH 20.S	 34'-7" x 8'-4" x 9'-0" 10.54m x 2.53m x 2.75m	23,485 lbs 10 650 kg
Counterweight Block A	 3'-11" x 2'-1" x 6'-8" 1.19m x 0.63m x 2.03m	7,930 lbs 3 600 kg	Undercarriage UW 260.2	 21'-1" x 26'-0" x 16'-2" 6.42m x 7.93m x 4.93m	30,700 lbs 13 930 kg
Counterweight Block B	 3'-11" x 1'-4" x 6'-8" 1.19m x 0.41m x 2.03m	5,285 lbs 2 400 kg	Undercarriage UW 260.3	 21'-1" x 26'-0" x 16'-2" 6.42m x 7.93m x 4.93m	37,800 lbs 17 190 kg
Counterweight Block C	 3'-11" x 7" x 6'-8" 1.19m x 0.18m x 2.03m	2,205 lbs 1 000 kg	Crossframe KRE 260.2	 19'-8" x 19'-8" x 14'-2" 6.0m x 6.0m x 4.32m	24,000 lbs 10 885 kg
Central Ballast Block A (for KRE/UW260.2, UW260.3)	 12'-6" x 1'-8" x 5'-2" 3.8m x 0.5m x 1.57m	11,025 lbs 5 000 kg	Central Ballast Block B (for KRE/UW260.2, UW260.3)	 12'-6" x 10" x 5'-2" 3.8m x 0.25m x 1.57m	5,512 lbs 2 500 kg

¹ Includes race bearing, gearboxes and motors.

² Does not include race bearing.

³ Does not include wire rope.

⁴ Jib assemblies include jib sections, pendants, trolley and trolley rope.

NOTE: Weights and dimensions are approximate. Scale components before lifting.



Morrow Equipment
C O M P A N Y, L. L. C.

3218 Pringle Road SE • P O Box 3306 • Salem, Oregon 97302-0306 USA
Tel. 503.585.5721 • Fax. 503.363.1172 • www.morrowequipment.com

The American home of
LIEBHERR

Atlanta, GA • Charlotte, NC • Chicago, IL • Denver, CO • Honolulu, HI • Houston, TX • Los Angeles, CA • Las Vegas, NV
Millwood, NY • St. Louis, MO • San Francisco, CA • Dallas, TX • Seattle, WA • Miami, FL • Tampa, FL • Washington, DC
Sydney, Australia • Wellington, New Zealand • Vancouver, BC, Canada • Toronto, ON, Canada • México DF, México