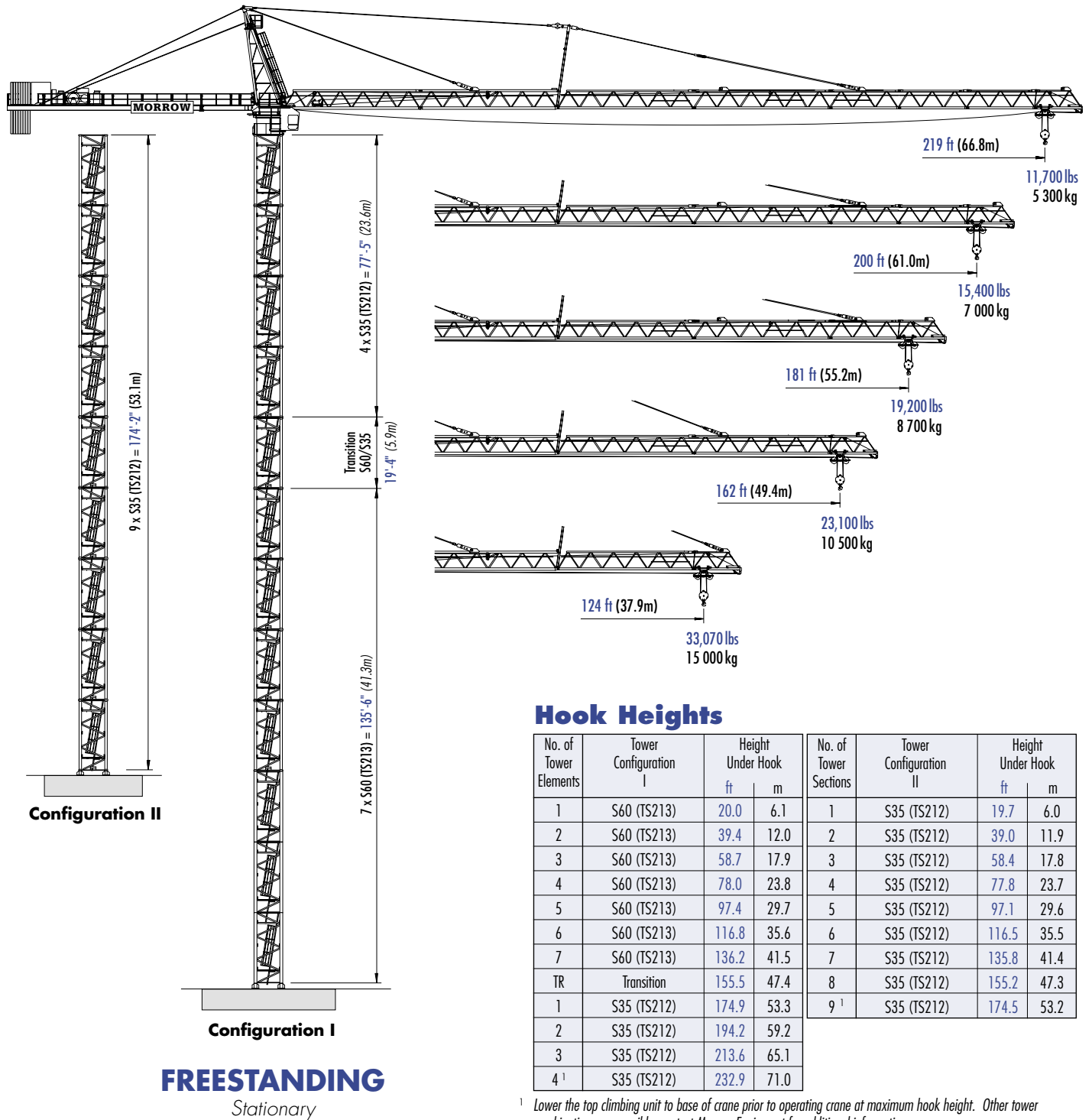


# Peiner SK 500-30

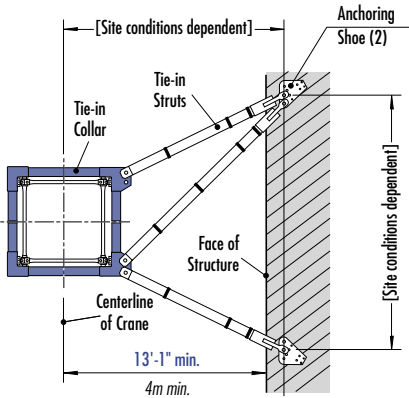
## TOWER CRANE



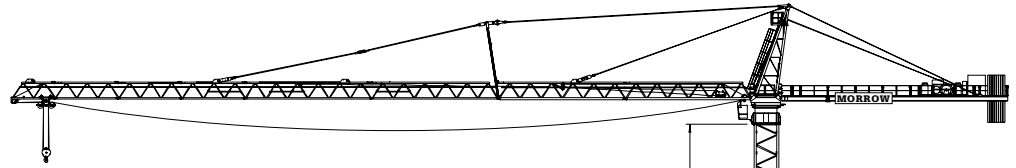
# Morrow Equipment

# Configurations

# Peiner SK 500-30



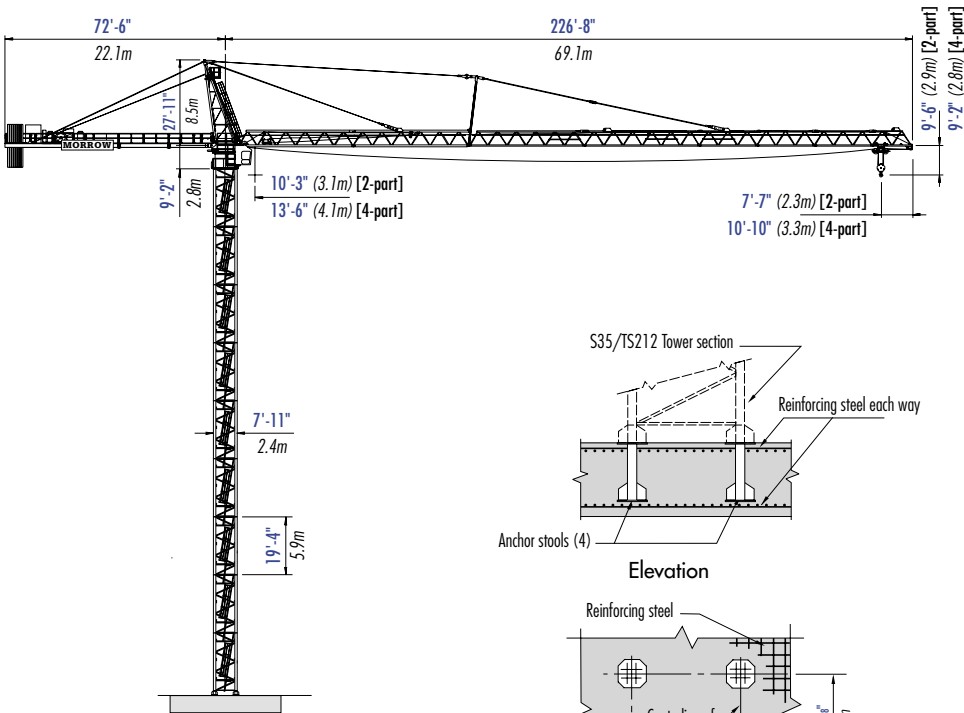
**TIE-IN ASSEMBLY**  
Plan view



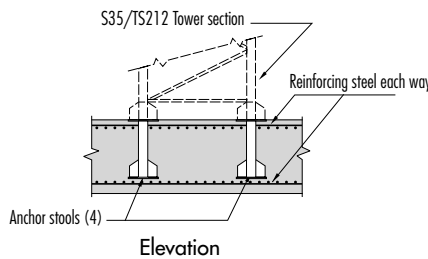
**\* NOTE!** Lower the top climbing unit to the uppermost tie-in prior to operating crane at maximum hook height.

Consult Morrow Equipment for specific information regarding dimensions, tie-in locations, reaction forces and slab openings.

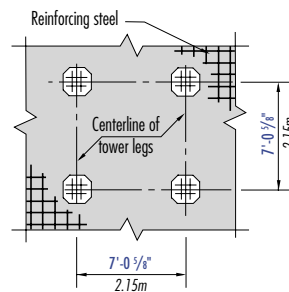
Please consult crane's operation manual before erecting, operating, servicing and dismantling crane.



**FREESTANDING**  
with S35/TS212 tower  
on concrete slab

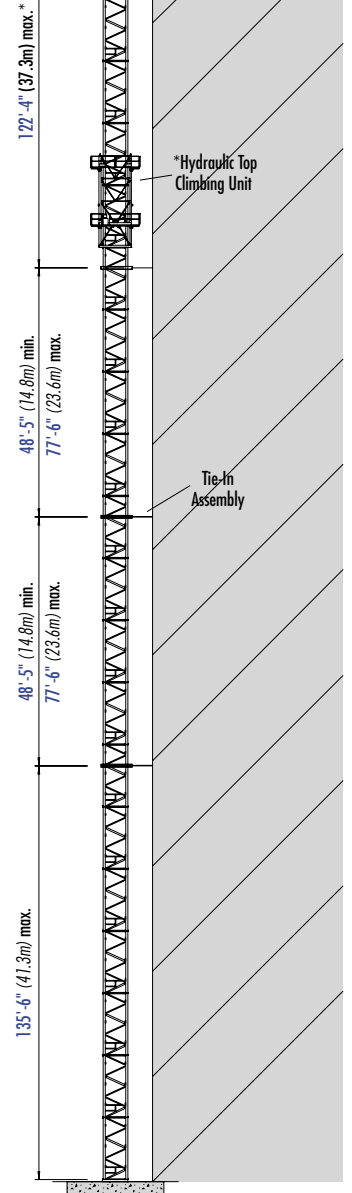


Elevation



Plan View

**FOUNDATION DETAILS**  
Concrete slab



**TOP CLIMBING**  
with S35/TS212 tower  
Tied to structure

# Radius and Capacities

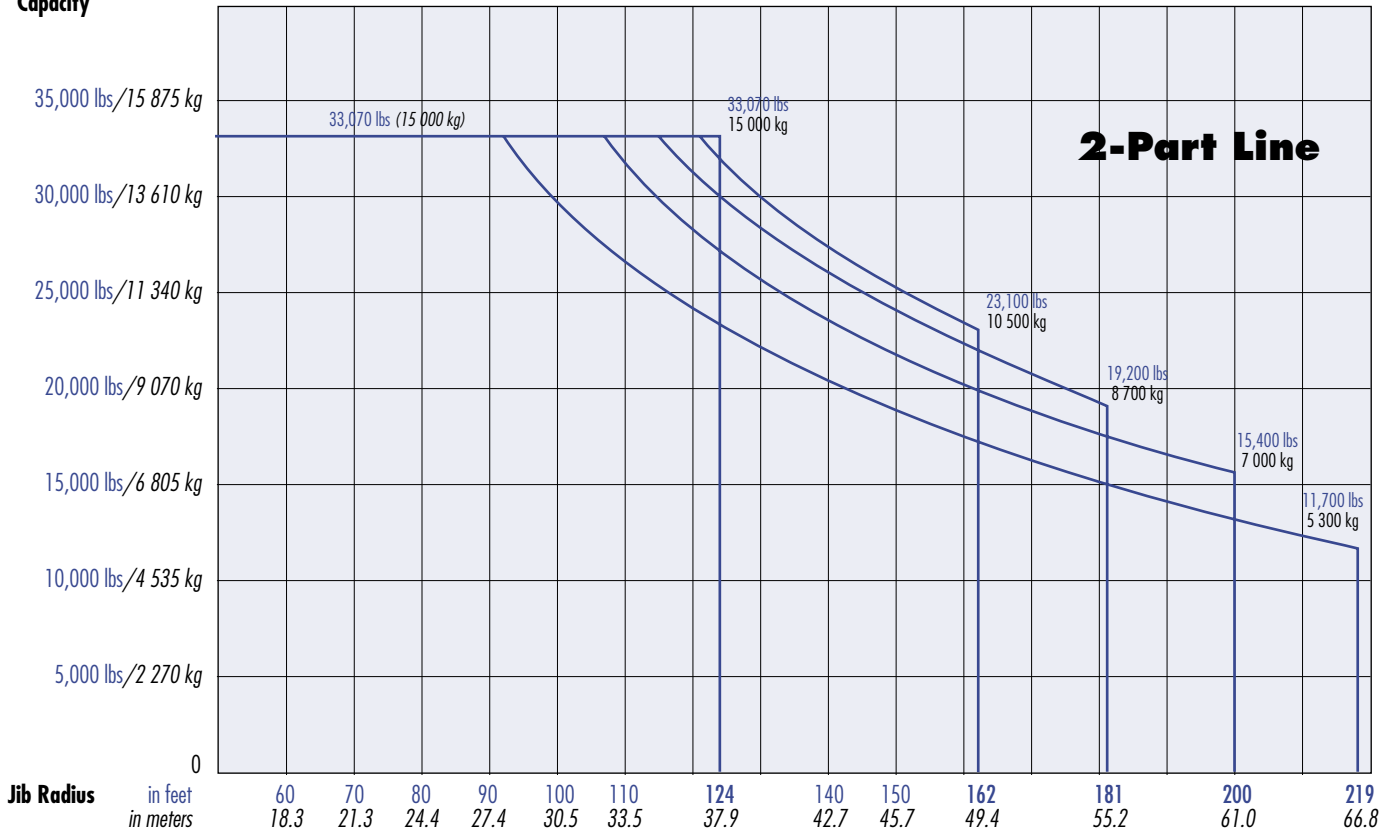
## Peiner Tower Crane Model SK 500-30

**IMPORTANT:** This data applies only to crane with serial number #0101

### 2-Part Line

Hook Radius	Maximum Capacity – Radius	ft m	98	108	118.8	124	130	135	140	145	150	155	162	170	181	190	200	210	219	
			29.9	32.9	36.2	37.9	39.6	41.1	42.7	44.2	45.7	47.2	49.4	51.8	55.2	57.9	61.0	64.0	66.8	
219 ft 66.8m	33,070 lbs – 93 ft 15 000 kg – 28.2m	lbs kg	30,900 14 000	27,600 12 500	24,700 11 200	23,400 10 600	22,200 10 100	21,300 9 700	20,400 9 300	19,500 8 800	18,700 8 500	18,000 8 200	17,100 7 800	16,100 7 300	14,900 6 800	14,000 6 400	13,100 5 900	12,400 5 600	11,700 5 300	
200 ft 61.0m	33,070 lbs – 105 ft 15 000 kg – 31.9m	lbs kg	33,070 15 000	31,800 14 400	28,500 12 900	27,100 12 300	25,700 11 700	24,600 11 200	23,600 10 700	22,600 10 300	21,800 9 900	20,900 9 500	19,900 9 000	18,800 8 500	17,400 7 900	16,400 7 400	15,400 7 000			
181 ft 55.2m	33,070 lbs – 114 ft 15 000 kg – 34.6m	lbs kg	33,070 15 000	33,070 15 000	31,300 14 200	29,800 13 500	28,300 12 800	27,100 12 300	25,900 11 700	24,900 11 300	24,000 10 900	23,100 10 500	21,900 9 900	20,700 9 400	19,200 8 700					
162 ft 49.4m	33,070 lbs – 119 ft 15 000 kg – 36.2m	lbs kg	33,070 15 000	33,070 15 000	33,070 15 000	31 300 14 200	29,800 13 500	28,500 12 900	27,400 12 400	26,300 11 900	25,300 11 500	24,300 11 000	23,100 10 500							
124 ft 37.9m	33,070 lbs – 124 ft 15 000 kg – 37.9m	lbs kg	33,070 15 000	33,070 15 000	33,070 15 000	33,070 15 000														

### Capacity



# Radius and Capacities

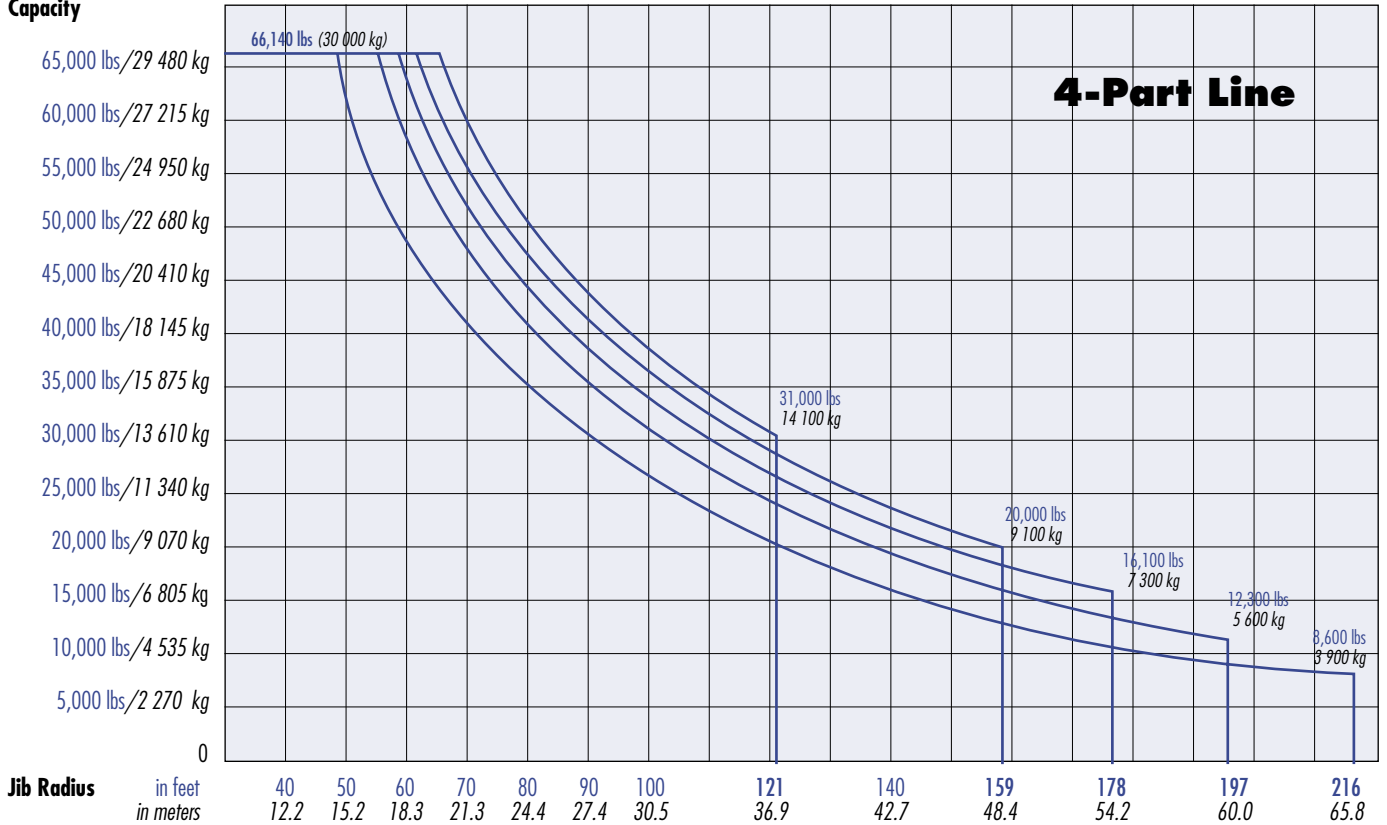
## Peiner Tower Crane Model SK 500-30

**IMPORTANT:** This data applies only to crane with serial number #0101

### 4-Part Line

Hook Radius	Maximum Max Capacity – Radius	ft m	60.4	70	80	90	100	110	121	130	140	150	159	170	178	185	197	205	216	
			18.4	21.3	24.4	27.4	30.5	33.5	36.9	39.6	42.7	45.7	48.4	51.8	54.2	56.4	60.0	62.5	65.8	
216 ft 65.8m	66,140 lbs – 48 ft 30 000 kg – 14.6m	lbs kg	49,600 22 500	41,500 18 800	35,300 16 000	30,400 13 800	26,600 12 100	23,500 10 700	20,700 9 400	18,700 8 500	16,900 7 700	15,300 6 900	14,100 6 400	12,700 5 800	11,900 5 400	11,100 5 000	10,100 4 600	9,400 4 300	8,600 3 900	
197 ft 60.0m	66,140 lbs – 54 ft 30 000 kg – 16.4m	lbs kg	57,300 26 000	48,000 21 800	40,800 18 500	35,300 16 000	31,000 14 100	27,500 12 500	24,300 11 000	22,100 10 000	20,000 9 100	18,200 8 300	16,900 7 700	15,300 6 900	14,300 6 500	13,500 6 100	12,300 5 600			
178 ft 54.2m	66,140 lbs – 58 ft 30 000 kg – 17.6m	lbs kg	63,000 28 600	52,700 23 900	44,900 20 400	38,900 17 600	34,200 15 500	30,400 13 800	27,000 12 300	24,600 11 200	22,300 10 100	20,300 9 200	18,800 8 500	17,100 7 800	16,100 7 300					
159 ft 48.4m	66,140 lbs – 60 ft 30 000 kg – 18.4m	lbs kg	66,140 30 000	55,400 25 100	47,200 21 400	41,000 18 600	36,100 16 400	32,100 14 600	28,500 12 900	26,000 11 800	23,600 10 700	21,500 9 800	20,000 9 100							
121 ft 36.9m	66,140 lbs – 64 ft 30 000 kg – 19.6m	lbs kg	66,140 30 000	59 900 27 200	51,100 23 200	44,400 20 100	39,100 17 700	34,800 15 800	31,000 14 100											

### Capacity



# SPECIFICATIONS

## Peiner Tower Crane Model SK 500-30

**IMPORTANT:** This data applies only to crane with serial number #0101

### Hoist Speed and Capacity

Hoist Unit	2-Part Line				
	Gear	Capacity	Line Speed	Capacity	Line Speed
165 hp (122 kW) AC hoist unit 4-speed gearbox Remote-controlled gear shifting Eddy current brake        2P280 4P140	1	33,070 lbs	@ 125 fpm	15 000 kg	@ 38 m/min
	2	19,840 lbs	@ 197 fpm	9 000 kg	@ 60 m/min
	3	12,125 lbs	@ 315 fpm	5 500 kg	@ 96 m/min
	4	6,615 lbs	@ 492 fpm	3 000 kg	@ 150 m/min
	4-Part Line				
	1	66,140 lbs	@ 62 fpm	30 000 kg	@ 19 m/min
	2	39,680 lbs	@ 98 fpm	18 000 kg	@ 30 m/min
	3	24,250 lbs	@ 157 fpm	11 000 kg	@ 48 m/min
	4	13,230 lbs	@ 246 fpm	6 000 kg	@ 75 m/min

**IMPORTANT!** Capacities and line speeds indicated will vary depending on the amount of hoist rope installed. This crane model may be equipped with a hoist unit other than that specified in the data above. To verify, check the serial number of the crane and refer to the SK 500-0101 Operation Manual for additional information.

### Motor Information

Drive Unit	Horsepower	Kilowatts	Speed	
Trolley (2-part line)	12 hp	9 kW	max. 320 fpm	max. 96 m/min
Trolley (4-part line)	12 hp	9 kW	max. 160 fpm	max. 48 m/min
Swing	2 x 12 hp	2 x 9 kW	1.0 rpm	

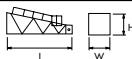
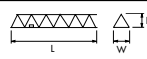
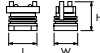
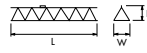
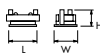
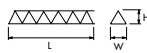

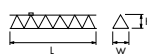

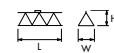

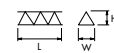
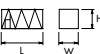
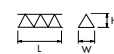
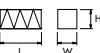


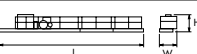
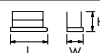
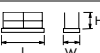
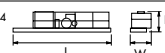

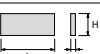
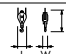
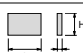
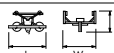
### Power Requirements

480 V — 3-phase — 60 Hz — 300 Amperes service

Specifications subject to change without notice. For other configurations and specifications, contact Morrow Equipment.

# Component List

# Peiner SK 500-30

Description	Dimensions L x W x H	Weight	Description	Dimensions L x W x H	Weight
Tower Top	 29'-11" x 7'-3" x 8'-11" 9.12m x 2.2m x 2.72m	8,600 lbs 3 900 kg	Jib Section ① with trolley drive	 38'-8" x 6'-2" x 6'-10" 11.8m x 1.88m x 2.09m	7,275 lbs 3 300 kg
Turntable (Complete) Upper & Lower Part	 10'-7" x 10'-1" x 12'-3" 3.23m x 3.08m x 3.73m	29,100 lbs 13 200 kg	Jib Section ②	 38'-8" x 6'-2" x 6'-3" 11.8m x 1.88m x 1.91m	6,615 lbs 3 000 kg
Turntable Upper Part <sup>1</sup>	 10'-7" x 7'-5" x 7'-1" 3.23m x 2.25m x 2.16m	13,970 lbs 6 335 kg	Jib Section ③	 38'-8" x 6'-2" x 6'-1" 11.8m x 1.88m x 1.85m	4,190 lbs 1 900 kg
Turntable Lower Part <sup>2</sup>	 8'-8" x 10'-1" x 5'-2" 2.65m x 3.08m x 1.57m	15,130 lbs 6 865 kg	Jib Section ④	 38'-8" x 6'-2" x 6'-1" 11.8m x 1.88m x 1.85m	4,190 lbs 1 900 kg
Operator's Cab	 5'-7" x 3'-11" x 8'-6" 1.7m x 1.2m x 2.6m	900 lbs 410 kg	Jib Section ⑤	 20'-0" x 6'-2" x 6'-3" 6.1m x 1.88m x 1.91m	2,205 lbs 1 000 kg
Cab Access Platform	 12'-8" x 5'-7" x 2'-9" 3.85m x 1.7m x 0.85m	1,000 lbs 455 kg	Jib Section ⑥	 20'-0" x 6'-2" x 6'-1" 6.1m x 1.88m x 1.85m	2,205 lbs 1 000 kg
Tower Section S35 (TS212)	 19'-5" x 7'-10" x 8'-0" 5.92m x 2.4m x 2.44m	8,900 lbs 4 040 kg	Jib Section ⑦	 20'-0" x 6'-2" x 6'-1" 6.1m x 1.88m x 1.85m	1,545 lbs 700 kg
Transition Section S60 to S35	 19'-5" x 7'-11" x 7'-11" 5.92m x 2.41m x 2.41m	9,920 lbs 4 500 kg	Jib Section ⑧	 13'-1" x 6'-2" x 7'-1" 4m x 1.88m x 2.15m	1,390 lbs 630 kg
Tower Section S60 (TS213)	 19'-5" x 7'-11" x 7'-11" 5.92m x 2.41m x 2.41m	9,920 lbs 4 500 kg	Jib Assembly Part 1 <sup>6</sup> for Jibs 124-ft to 219-ft	①② 76'-9" x 6'-2" x 6'-10" 23.4m x 1.88m x 2.09m	21,600 lbs 9 800 kg
Counterjib <sup>3</sup> (Complete)	 70'-6" x 9'-6" x 8'-4" 21.5m x 2.9m x 2.55m	31,325 lbs 14 210 kg	Jib Assembly Part 2 <sup>7</sup> 219-ft (66.8m)	③④⑤⑥⑦⑧ 146'-8" x 6'-2" x 6'-3" 44.7m x 1.88m x 1.91m	19,115 lbs 8 670 kg
Counterjib Section #1 (Inner)	 14'-9" x 6'-5" x 5'-3" 4.5m x 1.95m x 1.6m	2,315 lbs 1 050 kg	Jib Assembly Part 2 <sup>7</sup> 200-ft (61.0m)	③④⑤⑥⑧ 127'-8" x 6'-2" x 6'-1" 38.9m x 1.88m x 1.85m	17,570 lbs 7 970 kg
Counterjib Section #2 (Intermediate)	 18'-1" x 6'-5" x 5'-3" 5.5m x 1.95m x 1.6m	2,755 lbs 1 250 kg	Jib Assembly Part 2 <sup>7</sup> 181-ft (55.2m)	③④⑤⑧ 108'-7" x 6'-2" x 6'-1" 33.1m x 1.88m x 1.85m	15,365 lbs 6 970 kg
Counterjib Section #3 <sup>4</sup> (Outer)	 37'-9" x 9'-6" x 8'-4" 11.5m x 2.9m x 2.55m	26,255 lbs 11 910 kg	Jib Assembly Part 2 <sup>7</sup> 162-ft (49.4m)	③④⑧ 89'-7" x 6'-2" x 6'-1" 27.3m x 1.88m x 1.85m	12,645 lbs 5 735 kg
Hoist Unit <sup>5</sup> 165 hp (122 kW)	 10'-8" x 8'-2" x 4'-7" 3.25m x 2.49m x 1.4m	15,140 lbs 6 870 kg	Jib Assembly Part 2 <sup>7</sup> 124-ft (37.9m)	③⑧ 51'-6" x 6'-2" x 6'-1" 15.7m x 1.88m x 1.85m	8,455 lbs 3 835 kg
Counterweight Block A	 14'-8" x 7'-5" x 5'-1" 4.47m x 0.19m x 1.55m	6,800 lbs 3 085 kg	Hook Block	 2'-4" x 1'-6" x 4'-2" 0.7m x 0.45m x 1.25m	800 lbs 360 kg
Counterweight Block B	 9'-5" x 5'-5" x 5'-1" 2.87m x 0.14m x 1.55m	3,200 lbs 1 450 kg	Trolley (Outer) (2-part operation)	 5'-7" x 7'-1" x 3'-11" 1.7m x 2.16m x 1.2m	900 lbs 410 kg

NOTE! Weights and dimensions are approximate. Scale components before lifting. Please consult Operation Manual before erecting, operating, servicing or dismantling crane.

- <sup>1</sup> Turntable Upper Part includes swing motors and slewing ring. Does not include slewing ring support and support frame.
- <sup>2</sup> Turntable Lower Part includes slewing ring support and support frame. Does not include Upper Part, swing motors and slewing ring.
- <sup>3</sup> Counterjib (Complete) include 165 hp (122 kW) hoist unit with frame, counterjib sections 1, 2 and 3, electrical panels and handrails. Does not include wire rope or counter weights.
- <sup>4</sup> Counterjib section 3 includes hoist unit with frame, electrical panels and handrails. Does not include wire rope or counterweights.
- <sup>5</sup> Includes frame. Does not include wire rope.
- <sup>6</sup> Jib Assembly Part 1 includes jib sections 1 and 2, pendant cables, jib A-frame, trolley drive unit, trolley wire rope, 2-part trolley (outer) and hook block. If 4-part application is used, weight increases by 2,730 lbs (1 240 kg) for additional trolley (inner) and hook block.
- <sup>7</sup> Jib Assembly Part 2 includes jib sections and pendant cables.



## Morrow Equipment

C O M P A N Y, L. L. C.

3218 Pringle Road SE • P O Box 3306 • Salem, Oregon 97302-0306 USA  
503 585 5721 • Fax 503 363 1172 • info@morrow.com • www.morrow.com

The American home of  
**LIEBHERR**  
TOWER CRANES

Atlanta, GA • Charlotte, NC • Chicago, IL • Denver, CO • Honolulu, HI • Houston, TX • Los Angeles, CA • Las Vegas, NV  
Millwood, NY • St. Louis, MO • San Francisco, CA • Seattle, WA • Miami, FL • Tampa, FL • Washington, DC • Sydney, Australia  
Wellington, New Zealand • Vancouver, BC, Canada • Toronto, ON, Canada • Mexico City, Mexico • Monterrey, Mexico