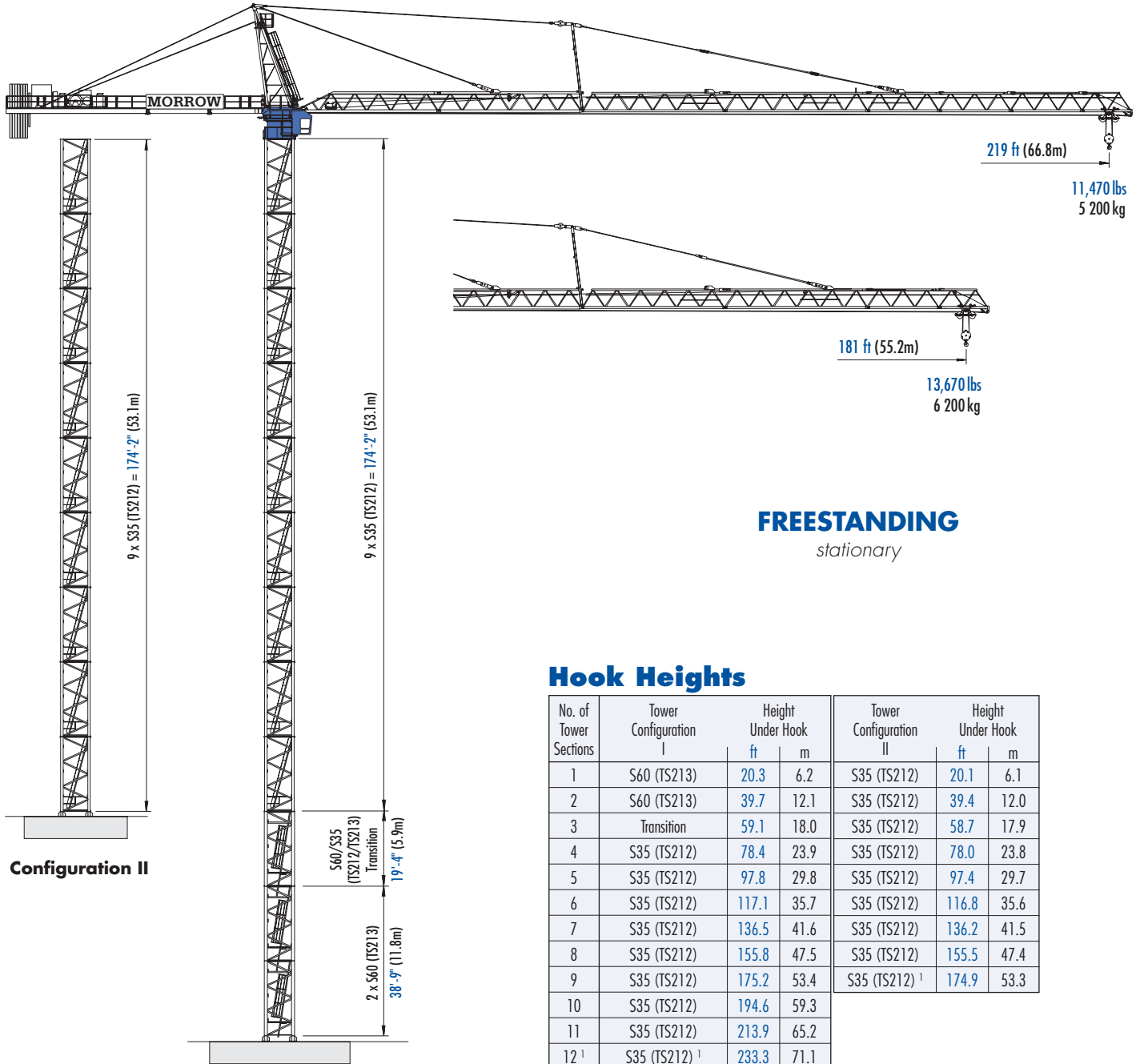


# Pecco SK 500-10

## TOWER CRANE



**FREESTANDING**  
stationary

### Hook Heights

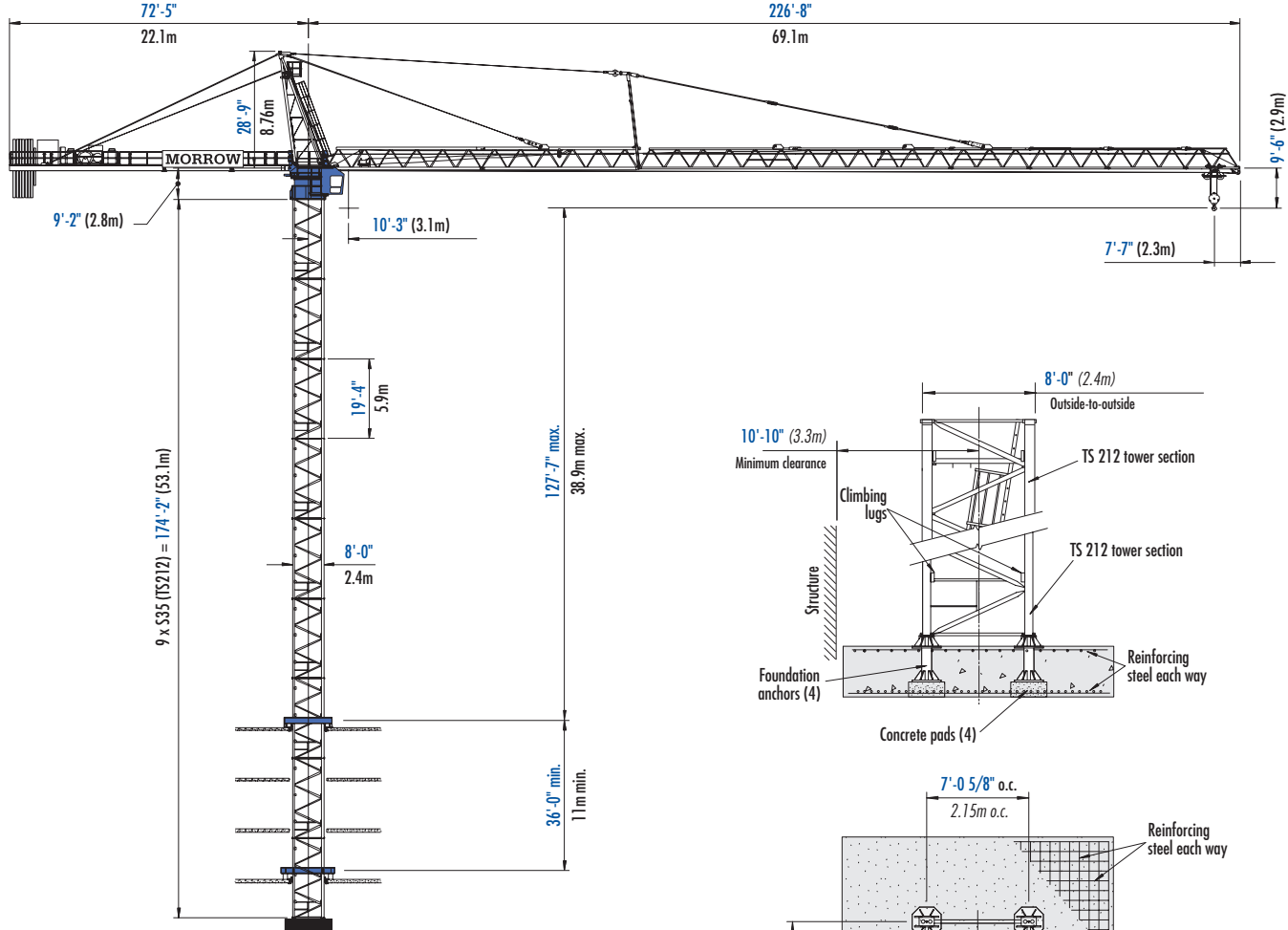
No. of Tower Sections	Tower Configuration I	Height Under Hook		Tower Configuration II	Height Under Hook	
		ft	m		ft	m
1	S60 (TS213)	20.3	6.2	S35 (TS212)	20.1	6.1
2	S60 (TS213)	39.7	12.1	S35 (TS212)	39.4	12.0
3	Transition	59.1	18.0	S35 (TS212)	58.7	17.9
4	S35 (TS212)	78.4	23.9	S35 (TS212)	78.0	23.8
5	S35 (TS212)	97.8	29.8	S35 (TS212)	97.4	29.7
6	S35 (TS212)	117.1	35.7	S35 (TS212)	116.8	35.6
7	S35 (TS212)	136.5	41.6	S35 (TS212)	136.2	41.5
8	S35 (TS212)	155.8	47.5	S35 (TS212)	155.5	47.4
9	S35 (TS212)	175.2	53.4	S35 (TS212) <sup>1</sup>	174.9	53.3
10	S35 (TS212)	194.6	59.3			
11	S35 (TS212)	213.9	65.2			
12 <sup>1</sup>	S35 (TS212) <sup>1</sup>	233.3	71.1			

<sup>1</sup> Lower the top climbing unit to base of crane before operating crane at maximum hook height. Other tower combinations are possible, contact Morrow Equipment for information.



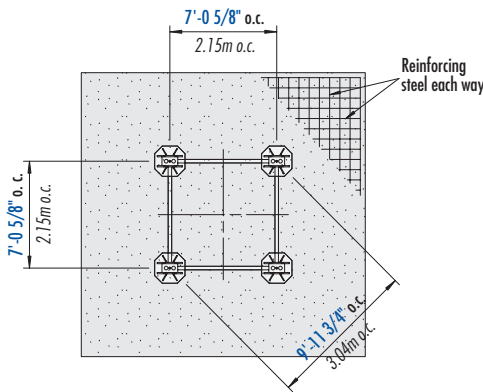
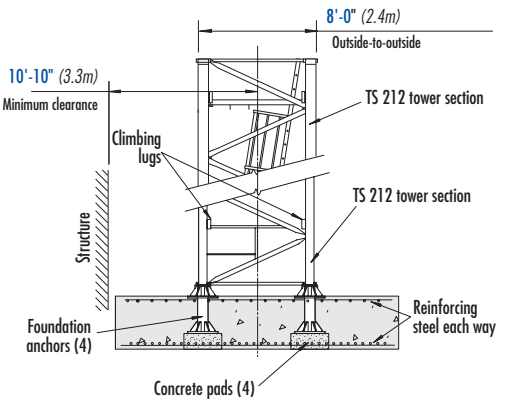
# Morrow Equipment

# Pecco SK 500-10



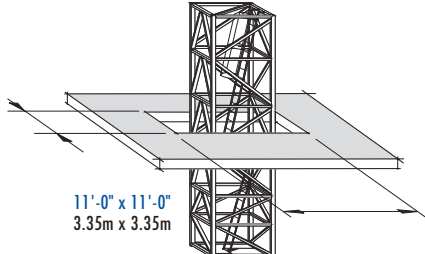
## BOTTOM CLIMBING with S35 (TS212) Tower

Inside structure



## FOUNDATION DETAILS with S35 (TS212) Tower

on reinforced concrete footing



## SLAB OPENING

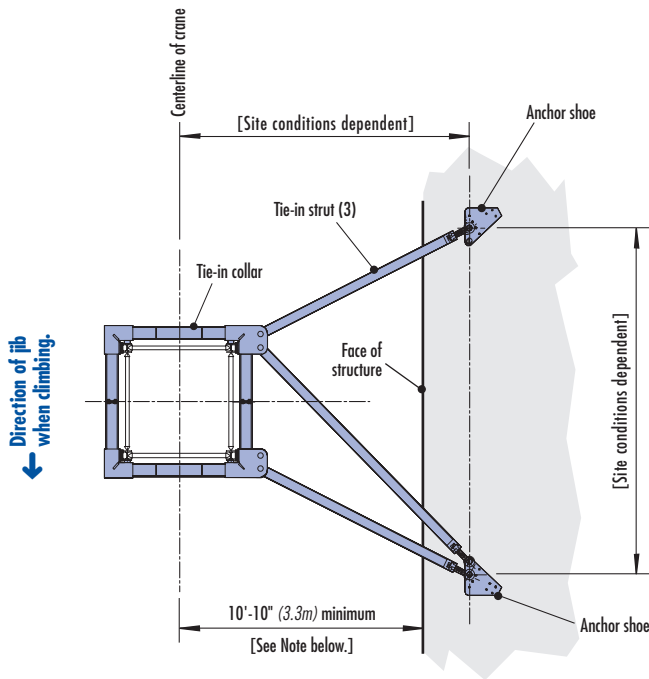
Recommended S35 (TS212)

**NOTE!** Recommended slab opening for erection and dismantlement. For other factors including deflection, contact Morrow engineering.

# Pecco SK 500-10

**NOTE!** Restrictions apply; please consult operation manual or Morrow engineering.

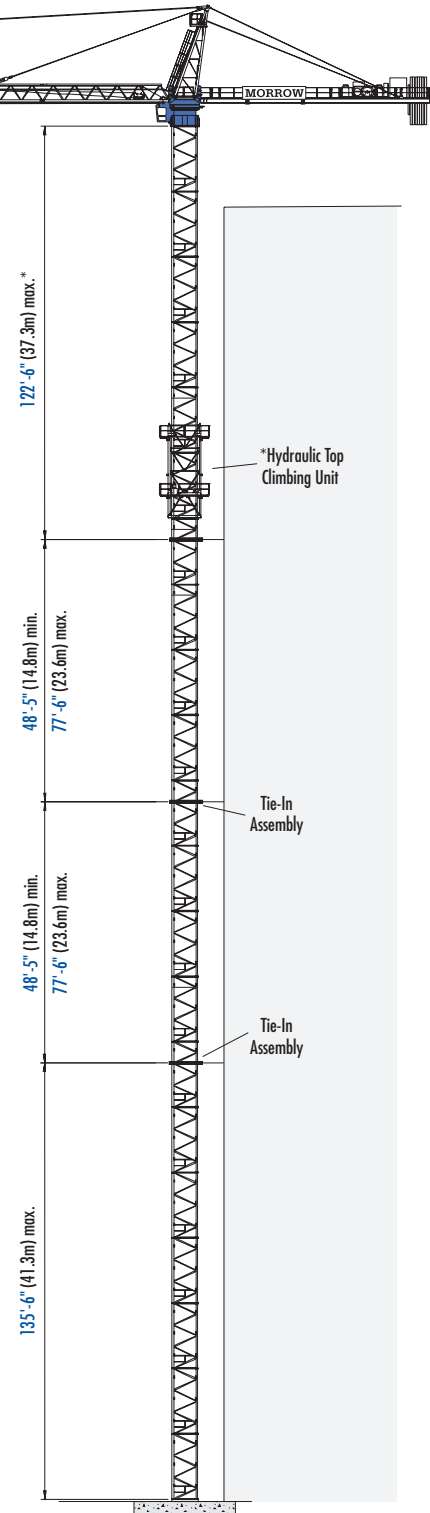
<sup>1</sup> Lower top climbing unit to upper tie-in assembly prior to operating crane.



## TIE-IN ASSEMBLY with S35 (TS212) Tower plan view

**NOTE!** The tie-in assembly shown is an example of a typical installation when using S35 (TS212) tower. Please note, however, that factors determining the installation of tie-in assemblies may vary due to project specific requirements. Contact Morrow for information.

Consult SK 500-10 Operation Manual before erecting, operating, servicing or dismantling crane.



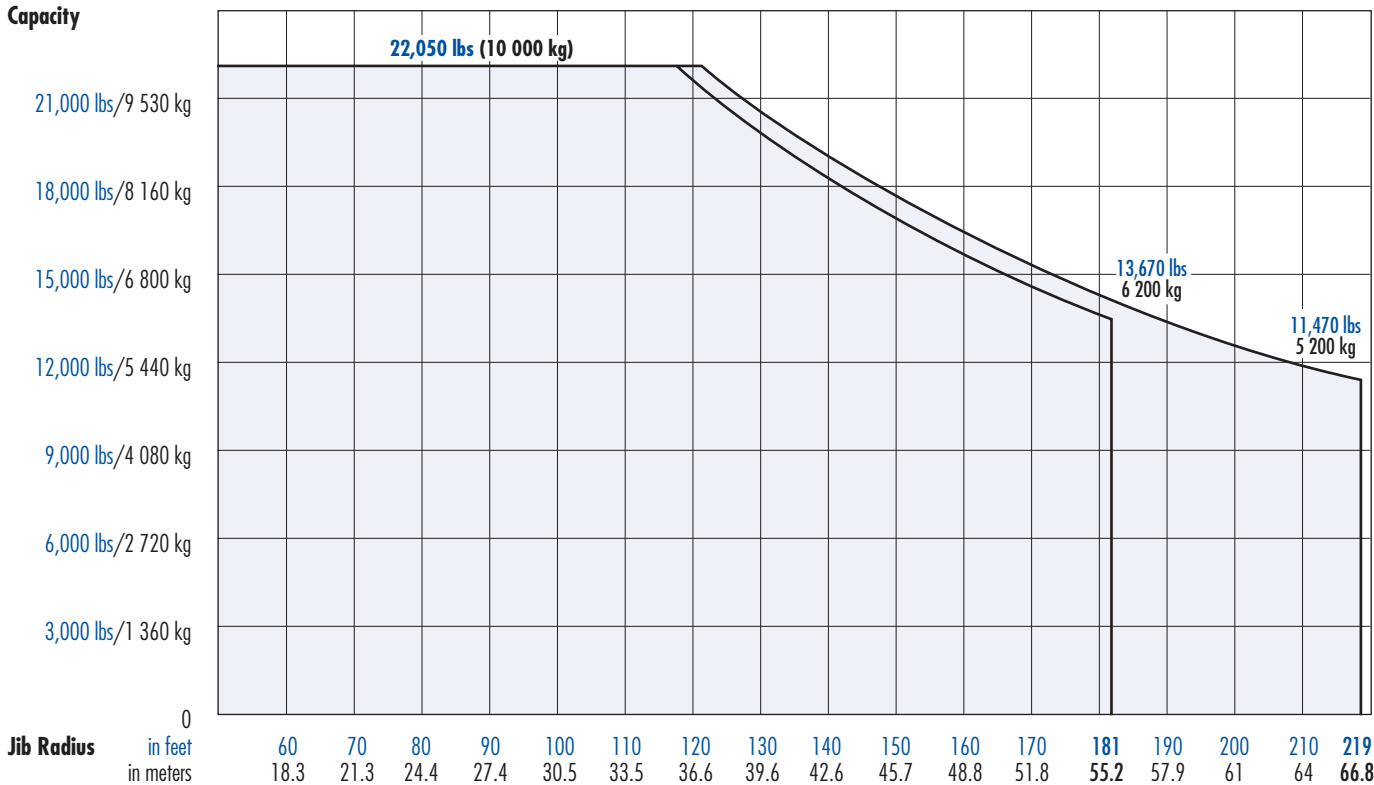
## TOP CLIMBING with S35 (TS212) Tower Tied to structure

# Pecco SK 500-10

**IMPORTANT:** This data applies only to crane with serial number #0203.

## Radius and Capacities for 2-Part operation

Hook Radius	2-Part Line Max Capacity – Radius	ft m	95 29.0	101 30.8	105 32.0	110 33.5	121 36.9	131 40.0	141 43.0	148 45.1	158 48.2	164 50.0	174 53.0	181 55.2	190 57.9	197 60.0	207 63.1	213 65.0	219 66.8	
219 ft 66.8m	22,050 lbs – 121 ft 10 000 kg – 36.9m	lbs kg	22,050 10 000	22,050 10 000	22,050 10 000	22,050 10 000	22,050 10 000	20,640 9 360	19,030 8 630	18,080 8 200	16,800 7 620	16,030 7 270	14,990 6 800	14,320 6 495	13,510 6 130	13,010 5 900	12,280 5 570	11,840 5 370	11,470 5 200	
181 ft 55.2m	22,050 lbs – 118 ft 10 000 kg – 36m	lbs kg	22,050 10 000	22,050 10 000	22,050 10 000	22,050 10 000	21,540 9 770	19,730 8 950	18,190 8 250	17,280 7 840	16,050 7 280	15,320 6 950	14,330 6 500	13,670 6 200						



# Pecco SK 500-10

**IMPORTANT:** This data applies only to crane with serial number #0203.

## Hoist Speed and Capacity

Hoist Unit	2-Part Line				
	Gear *	Capacity	Line Speed	Capacity	Line Speed
140 hp (105 kW) DC hoist unit Ward Leonard 2-speed gearbox Remote controlled gear shifting  2P170	1N	22,050 lbs @	141 fpm	10 000 kg @	43 m/min
	1F	13,900 lbs @	282 fpm	6 300 kg @	86 m/min
	2N	10,000 lbs @	354 fpm	4 500 kg @	108 m/min
	2F	5,000 lbs @	708 fpm	2 250 kg @	216 m/min

\* **NOTE!** N = Normal operation; F = Field weakening operation

**IMPORTANT!** Capacities and line speeds indicated above will vary depending on the amount of hoist rope installed. This crane model may be equipped with a hoist unit other than that specified in the data above. To verify, check the serial number of the crane and refer to the SK 500-10 (SN 0203) Operation Manual for information.

## Motor Information

Drive Unit	Horsepower	Kilowatts	Speed	
Trolley	12 hp	9 kW	0 - 320 fpm	0 - 96 m/min
Swing	3 x 12 hp	3 x 9 kW	1.0 rpm	

## Power Requirements


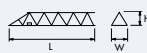

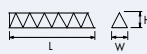

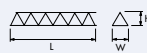

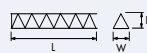

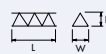

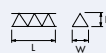




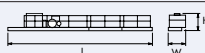

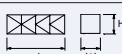

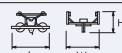

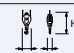
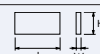
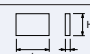
- 480 V phase-phase, 277 V each phase to ground with 120° phase shift between phases. **Do not use Open Delta transformer.**
- 3-phase, 60 Hz power supply plus ground wire.
- Static configuration: 300 Amp service.

Specifications subject to change without notice. For other configurations and specifications, contact Morrow Equipment.

# Pecco SK 500-10

## Component List

**NOTE!** Weights and dimensions are approximate. Scale all components before installing. Please consult Pecco SK 180 Operation Manual before erecting, operating, servicing and dismantling crane or crane components. Specifications are subject to change without prior notification. Contact Morrow Equipment for information.

Description	Dimensions L x W x H	Weight	Description	Dimensions L x W x H	Weight
Tower Top 	30'-4" x 8'-6" x 8'-10" 9.25m x 2.59m x 2.69m	10,200 lbs 4 625 kg	Jib Section ① 	38'-9" x 6'-5" x 7'-0" 11.8m x 1.95m x 2.13m	9,000 lbs 4 080 kg
Turntable (Complete) Upper & Lower Part 	10'-4" x 8'-6" x 12'-3" 3.15m x 2.59m x 3.73m	27,500 lbs 12 475 kg	Jib Section ② 	38'-9" x 6'-2" x 5'-10" 11.8m x 1.87m x 1.78m	7,600 lbs 3 450 kg
Turntable Upper Part <sup>1</sup> 	10'-4" x 6'-9" x 6'-11" 3.15m x 2.06m x 2.11m	14,100 lbs 6 395 kg	Jib Section ③ 	38'-9" x 6'-2" x 5'-3" 11.8m x 1.87m x 1.78m	4,400 lbs 2 000 kg
Turntable Lower Part <sup>2</sup> 	10'-0" x 8'-6" x 5'-4" 3.05m x 2.59m x 1.62m	13,400 lbs 6 080 kg	Jib Section ④ 	38'-9" x 6'-2" x 5'-10" 11.8m x 1.87m x 1.78m	4,600 lbs 2 090 kg
Operator's Cab 	6'-0" x 4'-0" x 7'-0" 1.82m x 1.21m x 2.13m	900 lbs 410 kg	Jib Section ⑤ 	20'-0" x 6'-2" x 5'-10" 6.1m x 1.87m x 1.78m	2,400 lbs 1 090 kg
Cab Access Platform 	12'-8" x 5'-6" x 6'-4" 3.86m x 1.68m x 1.93m	1,000 lbs 455 kg	Jib Section ⑥ 	19'-8" x 6'-2" x 5'-10" 6.0m x 1.87m x 1.78m	1,600 lbs 725 kg
Tower Section S35 	19'-5" x 7'-10" x 8'-0" 5.92m x 2.4m x 2.44m	8,900 lbs 4 040 kg	Jib Section ⑦ 	13'-7" x 6'-2" x 6'-1" 4.13m x 1.87m x 1.86m	1,600 lbs 725 kg
Transition Section S60 to S35 	19'-5" x 7'-11" x 7'-11" 5.92m x 2.41m x 2.41m	9,930 lbs 4 500 kg	Jib Assembly Part 1 <sup>5</sup> for all Jib Assemblies ①②	75'-9" x 6'-5" x 7'-0" 23.1m x 1.95m x 2.13m	26,700 lbs 12 110 kg
Tower Section S60 	19'-5" x 7'-11" x 7'-11" 5.92m x 2.41m x 2.41m	9,930 lbs 4 500 kg	Jib Assembly Part 2 <sup>6</sup> 219-ft (66.8m) ③④⑤⑥⑦	145'-9" x 6'-2" x 6'-1" 44.43m x 1.87m x 1.86m	18,200 lbs 8 255 kg
Counterjib <sup>3</sup> (Complete) 	70'-6" x 11'-9" x 8'-1" 21.5m x 3.58m x 2.46m	29,200 lbs 13 245 kg	Jib Assembly Part 2 <sup>6</sup> 181-ft (55.2m) ③④⑤⑦	107'-10" x 6'-2" x 6'-1" 32.86m x 1.87m x 1.86m	14,200 lbs 6 440 kg
Counterjib Section #1 (Inner) 	14'-9" x 6'-5" x 4'-11" 4.5m x 1.96m x 1.5m	2,700 lbs 1 225 kg	Top Climbing Unit with Hydraulics (S35) 	29'-3" x 11'-6" x 11'-6" 8.9m x 3.5m x 3.5m	24,750 lbs 11 230 kg
Counterjib Section #2 (Intermediate) 	18'-1" x 6'-5" x 4'-11" 5.5m x 1.96m x 1.5m	2,500 lbs 1 135 kg	Trolley 	5'-7" x 7'-1" x 3'-11" 1.7m x 2.16m x 1.19m	900 lbs 410 kg
Counterjib Section #3 <sup>4</sup> (Outer) 	37'-9" x 11'-9" x 8'-1" 11.5m x 3.58m x 2.46m	24,000 lbs 10 890 kg	Hook Block 	2'-4" x 1'-6" x 4'-2" 0.71m x 0.46m x 1.27m	800 lbs 360 kg
Counterweight Block A 	14'-8" x 7'-5" x 5'-1" 4.47m x 0.19m x 1.55m	6,800 lbs 3 085 kg	Counterweight Block B 	9'-5" x 5'-5" x 5'-1" 2.87m x 0.14m x 1.55m	3,200 lbs 1 450 kg

<sup>1</sup> Turntable Upper Part includes swing motors and slewing ring. Does not include slewing ring support and support frame.

<sup>2</sup> Turntable Lower Part includes slewing ring support and support frame. Does not include Upper Part, swing motors and slewing ring.

<sup>3</sup> Counterjib (Complete) includes Counterjib Sections #1, #2 & #3, 140 hp (105 kW) DC Hoist Unit with mounting frame, electrical panels and handrails. Does not include wire rope.

<sup>4</sup> Counterjib Section #3 includes 140 hp (105 kW) DC Hoist Unit with mounting frame, electrical panels and handrails. Does not include wire rope.

<sup>5</sup> Jib Assembly Part 1 includes jib sections, pendant cables, jib A-frame, trolley drive unit, trolley wire rope, trolley and hook block.

<sup>6</sup> Jib Assembly Part 2 includes jib sections and pendant cables.



## Morrow Equipment

C O M P A N Y, L. L. C.

3218 Pringle Road SE • P O Box 3306 • Salem, Oregon 97302-0306 USA

503.585.5721 • Fax 503.363.1172 • www.morrow.com • info@morrow.com

The American home of  
**LIEBHERR**  
TOWER CRANES

Atlanta, GA • Myrtle Beach, SC • Chicago, IL • Denver, CO • Honolulu, HI • Houston, TX • Los Angeles, CA • Las Vegas, NV • Millwood, NY  
Milwaukee, WI • St. Louis, MO • San Francisco, CA • Dallas, TX • Seattle, WA • Miami, FL • Pensacola, FL • Tampa, FL • Washington, DC  
Sydney, Australia • Brisbane, Australia • Wellington, New Zealand • Auckland, New Zealand • Vancouver, Canada • Toronto, Canada • Mexico City, Mexico