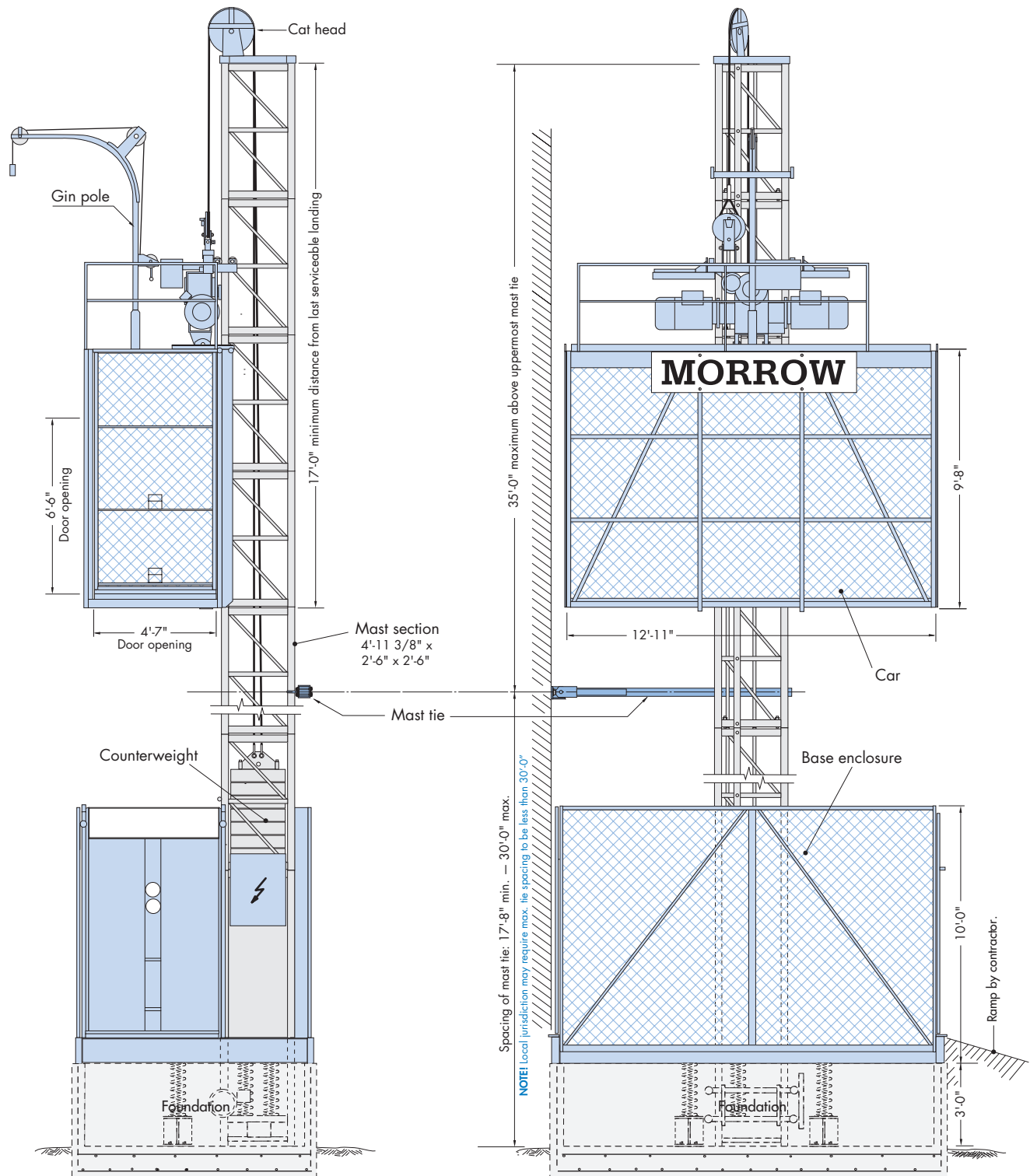


# Pecco PH6000-12

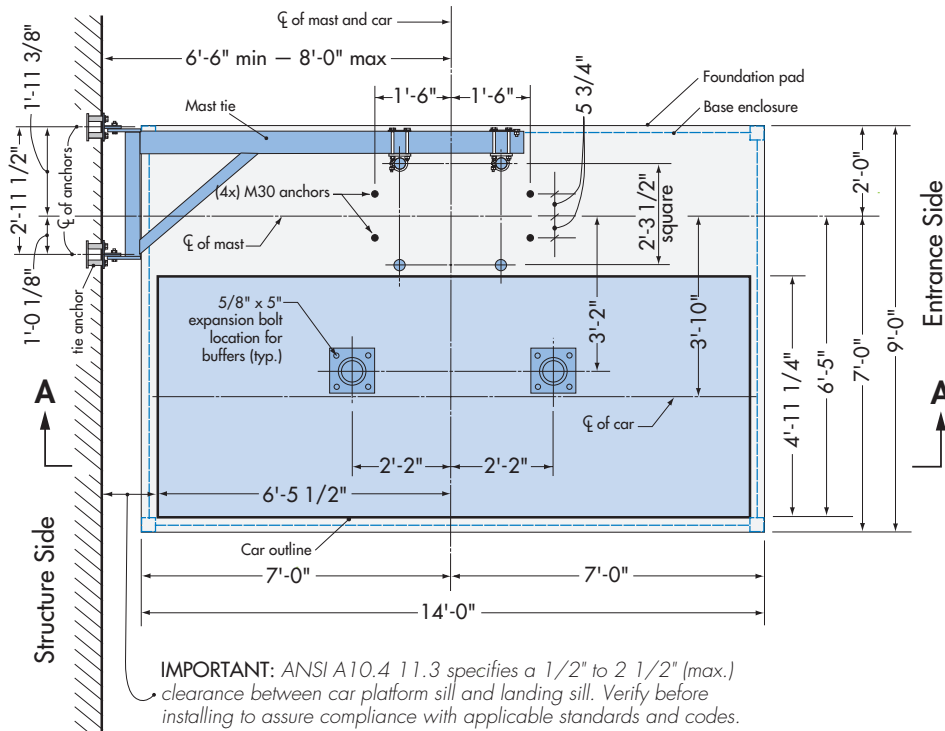
## Single Car Construction Hoist



# Morrow Equipment

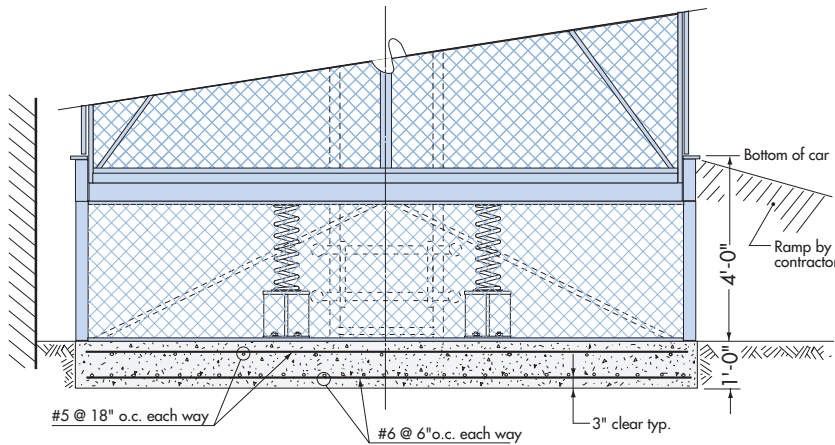
# Foundation Details - Slab

# PH6000-12



**Plan View - Slab**

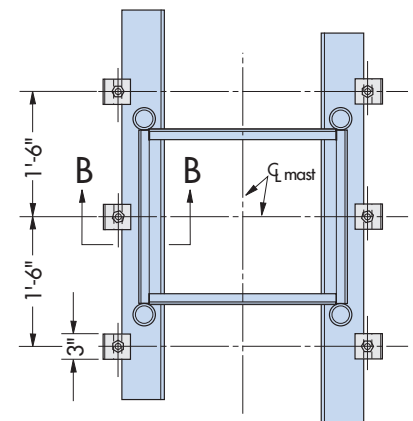
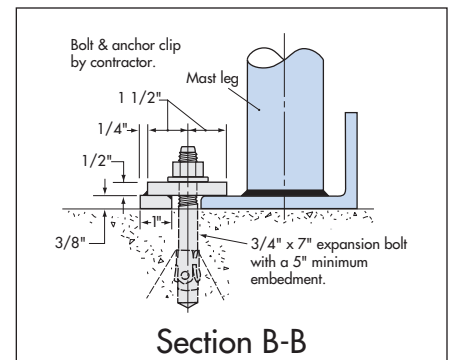
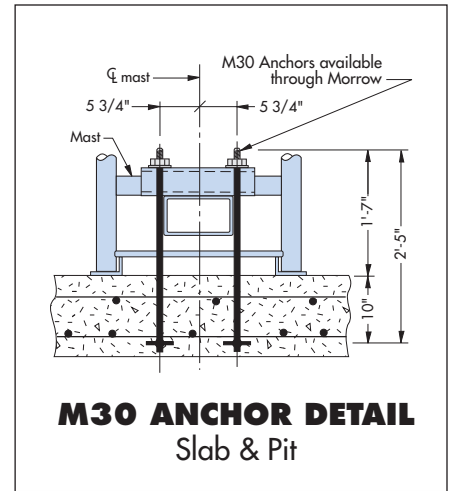
**IMPORTANT!** Verify that the use of a slab foundation conforms to all applicable federal, state and local standards and codes **PRIOR** to installation.



**Section A-A**

**NOTES:**

1. Foundation pad: 14'-0" x 9'-0" x 1'-0" with 3,625 psi concrete @ 28 days.
2. Reinforcing bars are ASTM 615-60.
3. Foundation based on 500-ft mast height. For greater heights, consult Morrow engineering.
4. Foundation pad designed for a minimum soil bearing of 1000 psf.
5. Check method of installing mast tie. This may determine the location of the foundation pad.

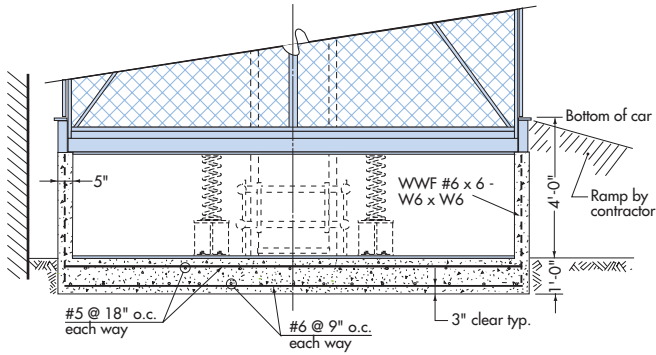


**WARNING:** When using this anchoring alternative, the car **MUST** remain at ground level until first mast tie is installed. For dismantling, the car **MUST** be at ground level when removing bottom mast tie.

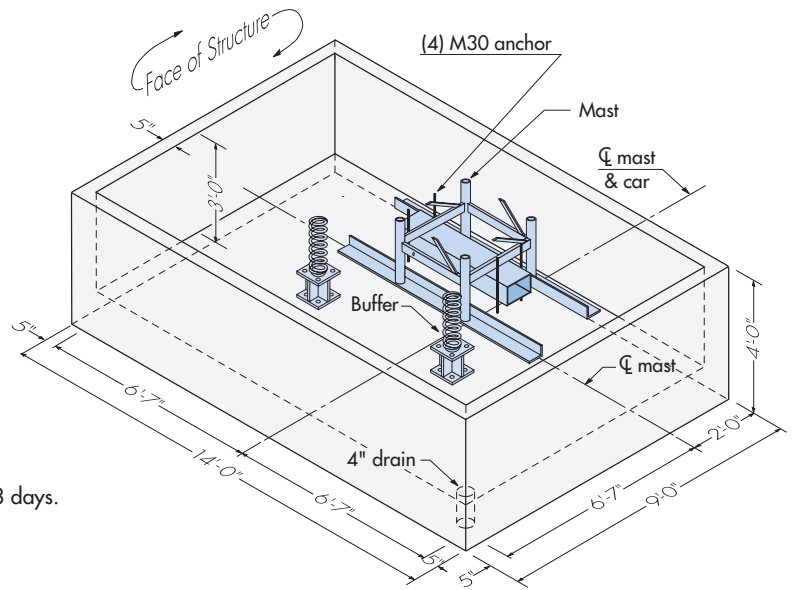
**ALTERNATE ANCHOR BOLT DETAIL**  
Slab & Pit

# Foundation Details - Pit

# PH6000-12



**Elevation - Pit**

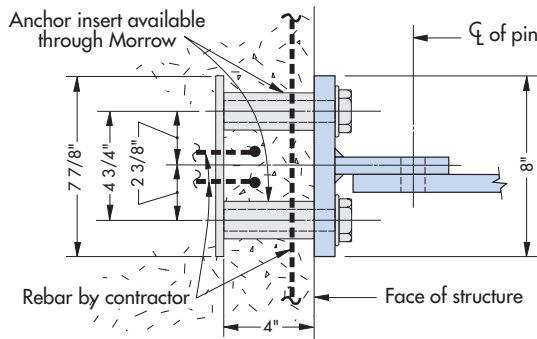


**Isometric View - Pit**

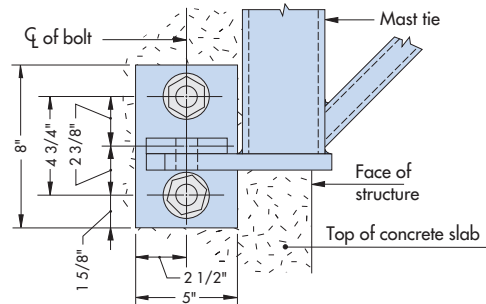
**NOTES:**

1. Foundation pad: 14'-0" x 9'-0" x 4'-0" with 3,625 psi concrete @ 28 days.
2. Pit size: 13'-2" x 8'-2" x 3'-0".
3. Reinforcing bars are ASTM 615-60.
4. Wire mesh is ASTM A185.
5. Foundation based on 500-foot mast height. For greater heights, consult Morrow engineering.
6. Foundation pad designed for minimum soil bearing of 1,000 psf.
7. Be sure to check method of mast tie installation. This may determine location of foundation pad.

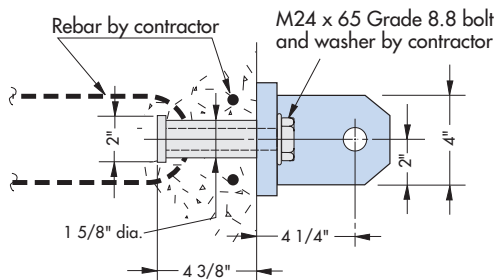
## Mast Tie Connections



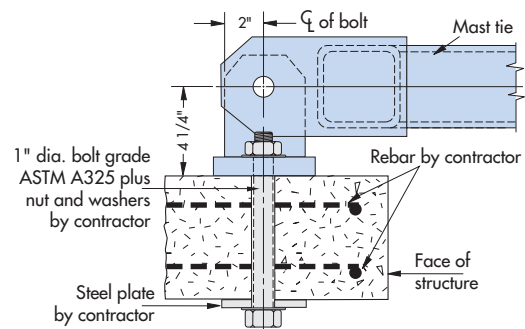
**Face Mount**  
Plan view



**Slab Mount**  
Plan View



**Face Mount**  
Elevation



**Slab Mount**  
Elevation

# SPECIFICATIONS

## Pecco Construction Hoist Single Car Model PH6000-12

### GENERAL

Load capacity .....	6,000 lbs	Max. height on standard masts.....	1,000'
Car inside (approx.) .....	4'-10 1/2" x 12'-6" x 8'-8"	Max. freestanding mast height* .....	40'-0"
Door opening .....	4'-7" x 6'-6"	*(Applies to M30 anchor configuration only.)	
Usable floor area .....	60 sq ft	Max. mast overhang above top mast brace .....	35'-0"
Mast section length .....	4'-11 3/8"	Maximum mast tie spacing <sup>1</sup> .....	30'-0"
Speed .....	120/240 fpm	Minimum mast tie spacing.....	17'-8"
Motors .....	2 x 20 hp	Recommended electrical service.....	100 Amperes
		Power requirement .....	480 Volt - 3 phase - 60 Hz

<sup>1</sup> IMPORTANT! Local jurisdiction may require maximum mast tie spacing to be less than 30'-0". Contact Morrow engineering for relevant information.

### WEIGHTS

Base enclosure .....	3,500 lbs	Hoist car.....	5,700 lbs
Counterweight .....	7,700 lbs	Mast section (standard) .....	385 lbs

### SAFETY FEATURES

- Fail-safe brakes on both hoist motors.
- Heavy-duty overspeed governor activates safeties that clamp directly onto mast legs.
- Stop and final limit switches limit hoist car travel when reaching end positions.
- Extra large safety shoes combine maximum braking with minimum wear.
- Door interlock switches prevent operation of hoist with doors open.
- Spring buffers.
- Rugged, all-steel car.

### OTHER FEATURES AND NOTES

- Adding mast sections does not require special equipment. The PH6000-12 is completely self-erecting.
- For instructions regarding installation and operation of the PH6000-12 single car hoist, refer to operation manual.
- Specifications are subject to change without prior notification.
- Drawings are for illustrative purposes only. Do not scale.
- For other configurations, contact Morrow engineering for information.
- This product must be used in a safe manner. Furthermore, use of this product and its components must be in conformity with manufacturers' specifications and in compliance with all applicable standards, codes, regulations, etc.
- Please refer to operation manual before installing, operating, servicing or dismantling PH6000-12 hoist.



## Morrow Equipment

C O M P A N Y, L. L. C.

3218 Pringle Road SE • P O Box 3306 • Salem, Oregon 97302-0306 USA  
503.585.5721 • Fax 503.363.1172 • www.morrow.com • info@morrow.com

The American home of  
**LIEBHERR**  
TOWER CRANES

Atlanta, GA • Myrtle Beach, SC • Chicago, IL • Denver, CO • Honolulu, HI • Houston, TX • Los Angeles, CA • Las Vegas, NV • Millwood, NY  
Milwaukee, WI • St. Louis, MO • San Francisco, CA • Dallas, TX • Seattle, WA • Miami, FL • Pensacola, FL • Tampa, FL • Washington, DC  
Sydney, Australia • Brisbane, Australia • Wellington, New Zealand • Auckland, New Zealand • Vancouver, Canada • Toronto, Canada • Mexico City, Mexico