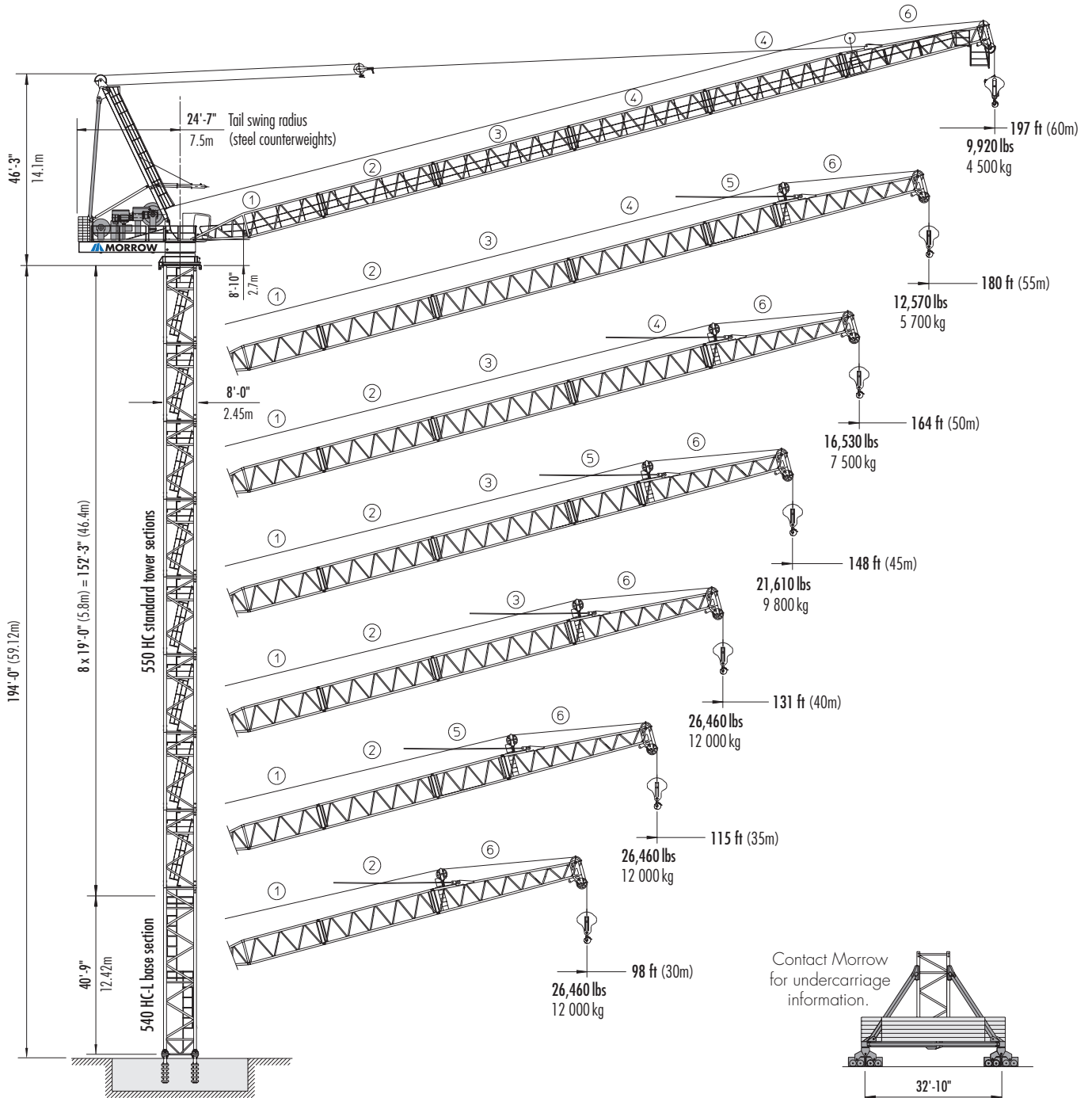


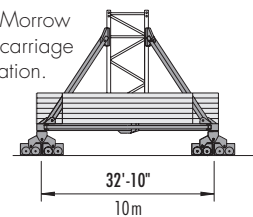
357 HC-L 12/24 Litronic[®] LIEBHERR Luffing Boom Tower Crane



Configuration I

550 HC/540 HC-L Tower
194 ft (59.1 m) max. hook height
on concrete footing

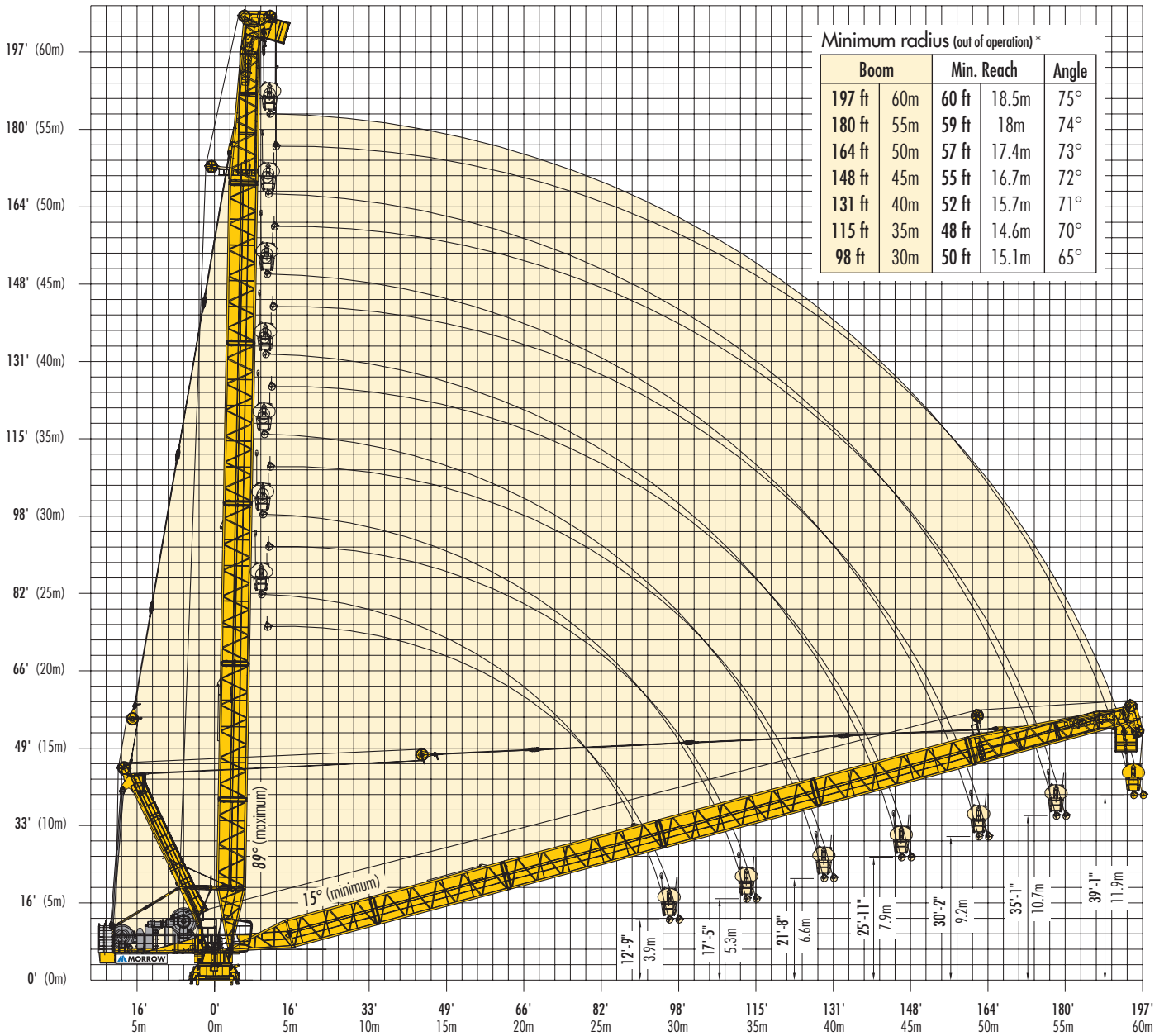
Contact Morrow
for undercarriage
information.



Rail-mounted Undercarriage
32'-10" (10m) Gauge

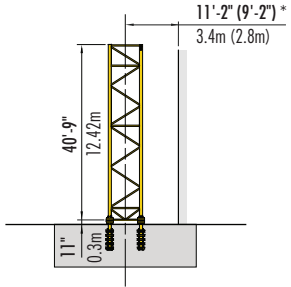
Radius and Hoisting Heights

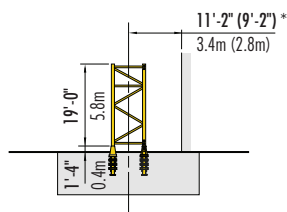
Grid: 1 meter x 1 meter



* **NOTE:** Out of operation boom position from 15° to 70°. Out of operation boom position dependent on boom length and number of tower sections installed. See Operations Manual for information or contact MORROW.

Tower Heights

Configuration I							
Tower Base Components	540 HC-L on 40'-9" (12.42m) base section 						
No. of Tower Sections	Boom Length						
	98 ft → 131 ft	30m → 40m	148 ft → 164 ft	45m → 50m	180 ft → 197 ft	55m → 60m	
0	41.7 ft	12.7m	41.7 ft	12.7m	41.7 ft	12.7m	
1	60.7 ft	18.5m	60.7 ft	18.5m	60.7 ft	18.5m	
2	79.7 ft	24.3m	79.7 ft	24.3m	79.7 ft	24.3m	
3	98.8 ft	30.1m	98.8 ft	30.1m	98.8 ft	30.1m	
4	117.8 ft	35.9m	117.8 ft	35.9m	117.8 ft	35.9m	
5	136.8 ft	41.7m	136.8 ft	41.7m	136.8 ft	41.7m	
6	155.8 ft	47.5m	155.8 ft	47.5m	155.8 ft	47.5m	
7	174.9 ft	53.3m	174.9 ft	53.3m	174.9 ft	53.3m	
8	193.9 ft	59.1m	193.9 ft	59.1m	193.9 ft	59.1m	
9	212.9 ft	64.9m	212.9 ft	64.9m	—	—	
10	231.9 ft	70.7m	—	—	—	—	

Configuration II								
Tower Base Components	Std. 550 HC Tower section 							
No. of Tower Sections	Boom Length							
	98 ft → 115 ft	30m → 35m	131 ft → 148 ft	40m → 45m	164 ft → 180 ft	50m → 55m	197 ft	60m
0	1.3 ft	0.4m	1.3 ft	0.4m	1.3 ft	0.4m	1.3 ft	0.4m
1	20.3 ft	6.2m	20.3 ft	6.2m	20.3 ft	6.2m	20.3 ft	6.2m
2	39.4 ft	12m	39.4 ft	12m	39.4 ft	12m	39.4 ft	12m
3	58.4 ft	17.8m	58.4 ft	17.8m	58.4 ft	17.8m	58.4 ft	17.8m
4	77.4 ft	23.6m	77.4 ft	23.6m	77.4 ft	23.6m	77.4 ft	23.6m
5	96.5 ft	29.4m	96.5 ft	29.4m	96.5 ft	29.4m	96.5 ft	29.4m
6	115.5 ft	35.2m	115.5 ft	35.2m	115.5 ft	35.2m	115.5 ft	35.2m
7	134.5 ft	41m	134.5 ft	41m	134.5 ft	41m	134.5 ft	41m
8	153.5 ft	46.8m	153.5 ft	46.8m	153.5 ft	46.8m	153.5 ft	46.8m
9	172.6 ft	52.6m	172.6 ft	52.6m	172.6 ft	52.6m	—	—
10	191.6 ft	58.4m	191.6 ft	58.4m	—	—	—	—
11	210.6 ft	64.2m	—	—	—	—	—	—

NOTE: ¹Lower top climbing unit to base of tower prior to operating crane.

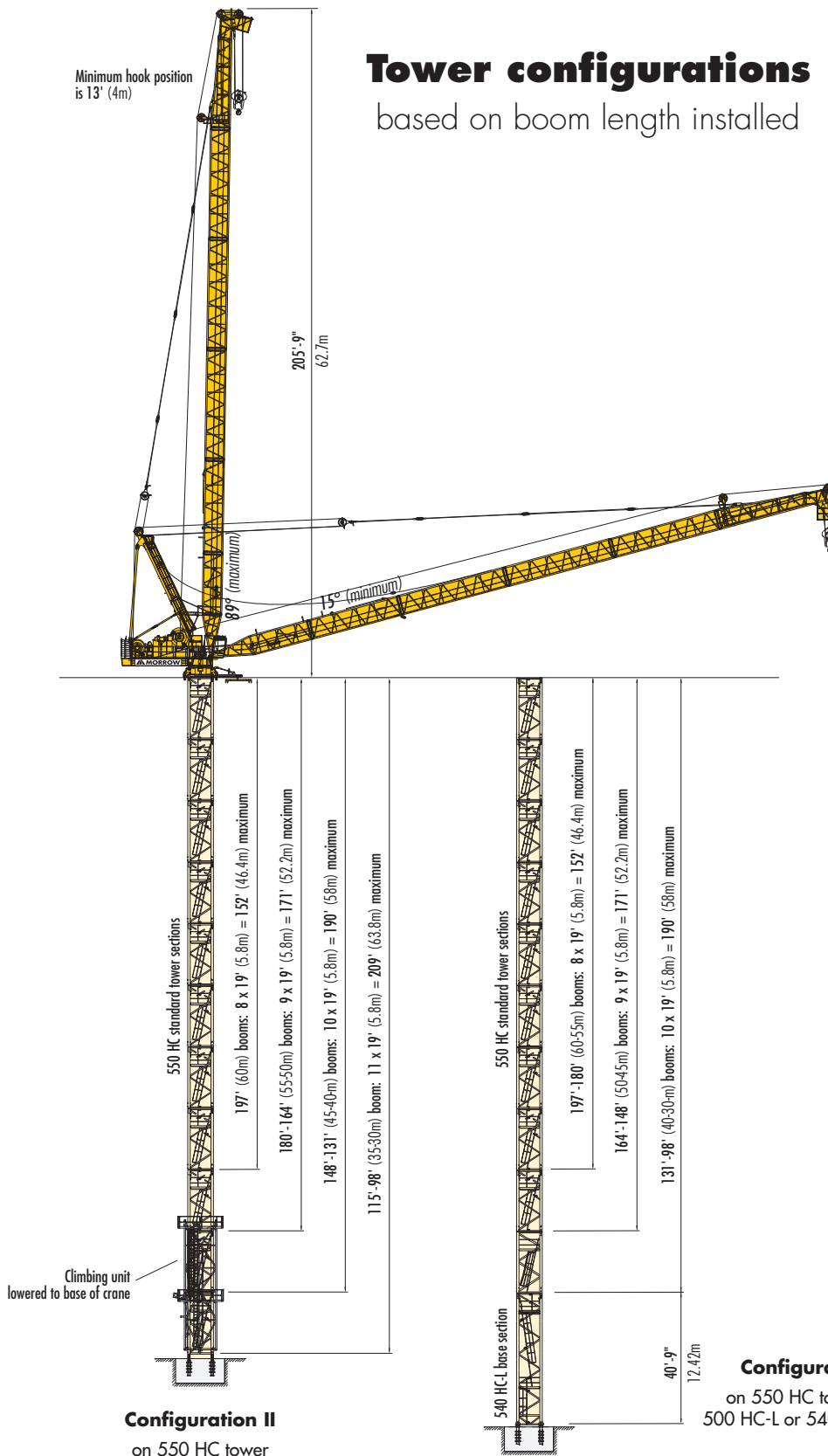
Alternate tower combinations are possible. Refer to Operation manual or contact MORROW for information.

Consult crane Operation Manual before erecting, operating, servicing, climbing or dismantling crane.

Specifications subject to change without prior notice. For additional information, contact MORROW.

Tower configurations

based on boom length installed



Boom at 15° (1-part operation)

Boom	Hook Reach	Hoisting Height
197 ft 60m	197 ft 60m	39 ft 11.9m
180 ft 55m	180 ft 55m	35 ft 10.7m
164 ft 50m	164 ft 50m	30 ft 9.2m
148 ft 45m	148 ft 45m	26 ft 7.9m
131 ft 40m	131 ft 40m	22 ft 6.6m
115 ft 35m	115 ft 35m	17 ft 5.3m
98 ft 30m	98 ft 30m	13 ft 3.9m

Boom at 75° (1-part operation)

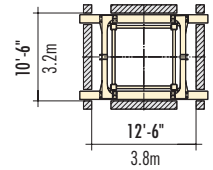
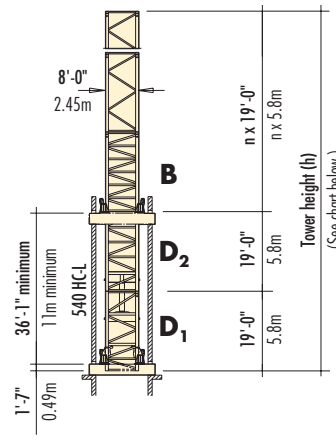
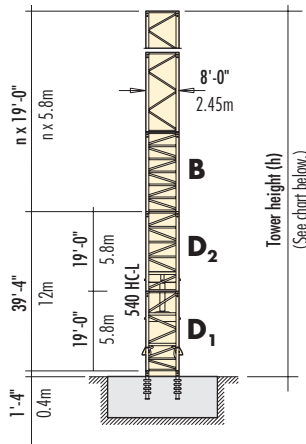
Boom	Hook Reach	Hoisting Height
197 ft 60m	48 ft 14.7m	174 ft 53m
180 ft 55m	44 ft 13.3m	157 ft 48m
164 ft 50m	39 ft 11.9m	141 ft 43m
148 ft 45m	35 ft 10.6m	125 ft 38m
131 ft 40m	30 ft 9.2m	108 ft 32.9m
115 ft 35m	26 ft 7.9m	91 ft 27.8m
98 ft 30m	21 ft 6.5m	75 ft 22.8m

Boom at 89° (1-part operation)

Boom	Hook Reach	Hoisting Height
197 ft 60m	13 ft 4m	177 ft 53.9m
180 ft 55m	12.8 ft 3.9m	160 ft 48.8m
164 ft 50m	12.5 ft 3.8m	143 ft 43.5m
148 ft 45m	12.1 ft 3.7m	126 ft 38.4m
131 ft 40m	11.8 ft 3.6m	108 ft 32.9m
115 ft 35m	11.5 ft 3.5m	92 ft 28m
98 ft 30m	11.1 ft 3.4m	75 ft 22.8m

Climbing Inside Structure

550 HC tower on 540 HC-L climbing elements

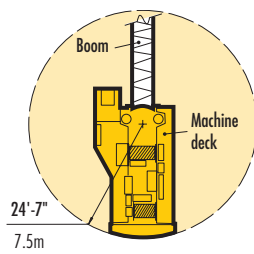


Key: **B** = Reinforced tower section - **D₁** = Bottom half of D section with hydraulics - **D₂** = Top half of D section

No. of Tower Sections (n)	Boom Length								Boom Length							
	98 ft	30m	115 ft → 131 ft	35m → 40m	148 ft → 180 ft	45m → 55m	197 ft → 213 ft	60m → 65m	98 ft	30m	115 ft → 131 ft	35m → 40m	148 ft → 180 ft	45m → 55m	197 ft → 213 ft	60m → 65m
0	39.4 ft	12m	39.4 ft	12m	39.4 ft	12m	39.4 ft	12m	38.1 ft	11.6m	38.1 ft	11.6m	38.1 ft	11.6m	38.1 ft	11.6m
1	58.4 ft	17.8m	58.4 ft	17.8m	58.4 ft	17.8m	58.4 ft	17.8m	57.1 ft	17.4m	57.1 ft	17.4m	57.1 ft	17.4m	57.1 ft	17.4m
2	77.4 ft	23.6m	77.4 ft	23.6m	77.4 ft	23.6m	77.4 ft	23.6m	76.1 ft	23.2m	76.1 ft	23.2m	76.1 ft	23.2m	76.1 ft	23.2m
3	96.5 ft	29.4m	96.5 ft	29.4m	96.5 ft	29.4m	96.5 ft	29.4m	95.1 ft	29m	95.1 ft	29m	95.1 ft	29m	95.1 ft	29m
4	115.5 ft	35.2m	115.5 ft	35.2m	115.5 ft	35.2m	115.5 ft	35.2m	114.2 ft	34.8m	114.2 ft	34.8m	114.2 ft	34.8m	114.2 ft	34.8m
5	135.5 ft	41m	135.5 ft	41m	135.5 ft	41m	135.5 ft	41m	133.2 ft	40.6m	133.2 ft	40.6m	133.2 ft	40.6m	133.2 ft	40.6m
6	153.5 ft	46.8m	153.5 ft	46.8m	153.5 ft	46.8m	153.5 ft	46.8m	152.2 ft	46.4m	152.2 ft	46.4m	152.2 ft	46.4m	152.2 ft	46.4m
7	172.6 ft	52.6m	172.6 ft	52.6m	172.6 ft	52.6m	—	—	171.3 ft	52.2m	171.3 ft	52.2m	171.3 ft	52.2m	171.3 ft	52.2m
8	191.6 ft	58.4m	191.6 ft	58.4m	—	—	—	—	190.3 ft	58m	190.3 ft	58m	190.3 ft	58m	—	—
9	210.6 ft	64.2m	—	—	—	—	—	—	209.3 ft	63.8m	209.3 ft	63.8m	—	—	—	—
10	—	—	—	—	—	—	—	—	228.3 ft	69.6m	—	—	—	—	—	—

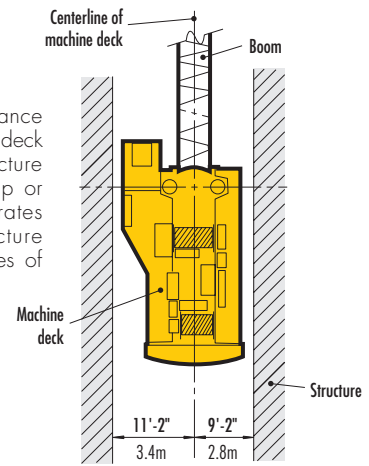
NOTE: The inside climbing views shown above are examples of a typical installation. Please note, however, that factors determining installation may vary due to job site specific conditions. Contact MORROW for information.

PLAN VIEW – showing tail swing radius for crane configuration using steel counterweights. Please consult Morrow for additional information.



TAIL SWING RADIUS
(Steel counterweights)

***NOTE** Allow for clearance between crane machine deck and any adjacent structure when climbing crane up or down. This view illustrates minimum crane-to-structure clearances for both sides of machine deck.



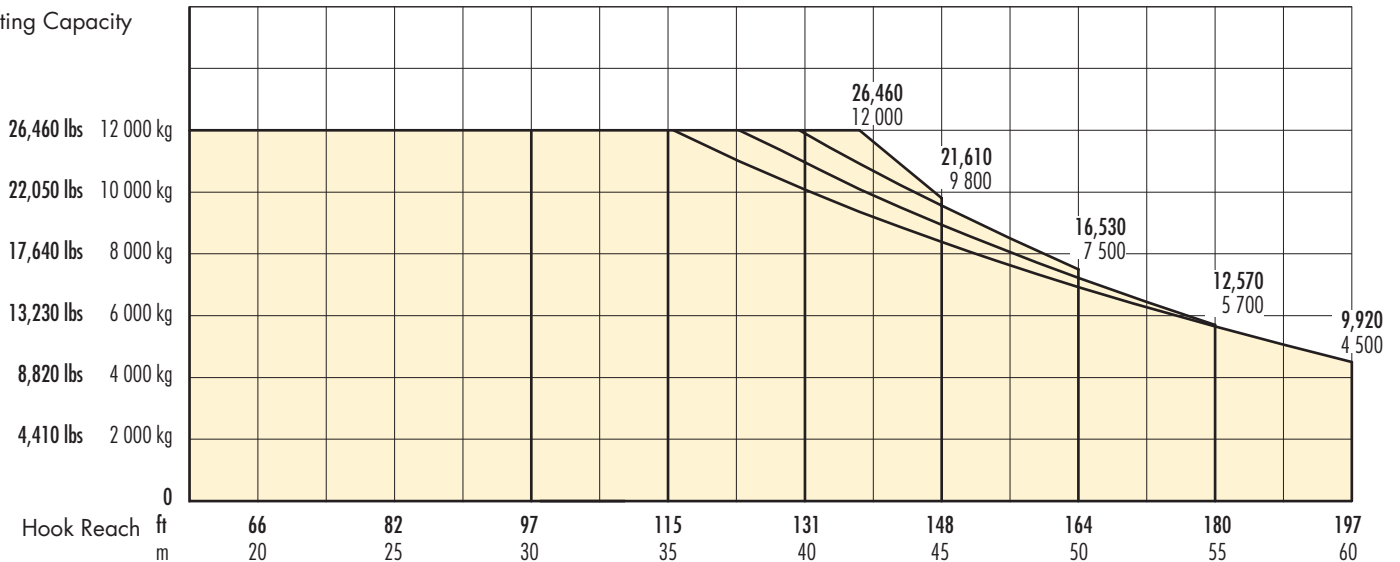
CLEARANCE REQUIREMENTS
Plan view

Radius and capacities one-part operation

Boom Length	Maximum Capacity – Radius	ft m	66 20	74 22.5	82 25	90 27.5	98 30	107 32.5	115 35	123 37.5	131 40	139 42.5	148 45	156 47.5	164 50	172 52.5	180 55	189 57.5	197 60
197 ft 60m	26,460 lbs – 115 ft 12 000 kg – 35.2m	lbs kg	26,460 12 000	26,460 12 000	26,460 12 000	26,460 12 000	26,460 12 000	26,460 12 000	26,460 12 000	24,340 11 040	22,200 10 070	20,280 9 200	18,470 8 380	16,820 7 630	15,280 6 930	13,820 6 270	12,460 5 650	11,180 5 070	9,920 4 500
180 ft 55m	26,460 lbs – 123 ft 12 000 kg – 37.6m	lbs kg	26,460 12 000	26,460 12 000	26,460 12 000	26,460 12 000	26,460 12 000	26,460 12 000	26,460 12 000	26,210 12 000	24,070 10 920	21,760 9 870	19,710 8 940	17,770 8 060	15,940 7 230	14,220 6 450	12,570 5 700		
164 ft 50m	26,460 lbs – 130 ft 12 000 kg – 39.8m	lbs kg	26,460 12 000	26,460 12 000	26,460 12 000	26,460 12 000	26,460 12 000	26,460 12 000	26,460 12 000	26,460 12 000	26,240 11 900	23,550 10 680	21,080 9 560	18,760 8 510	16,530 7 500				
148 ft 45m	26,460 lbs – 138 ft 12 000 kg – 42m	lbs kg	26,460 12 000	26,460 12 000	26,460 12 000	26,460 12 000	26,460 12 000	26,460 12 000	26,460 12 000	26,460 12 000	26,460 12 000	25,640 11 630	21,610 9 800						
131 ft 40m	26,460 lbs – 131 ft 12 000 kg – 40m	lbs kg	26,460 12 000	26,460 12 000	26,460 12 000	26,460 12 000	26,460 12 000	26,460 12 000	26,460 12 000	26,460 12 000	26,460 12 000								
115 ft 35m	26,460 lbs – 115 ft 12 000 kg – 35m	lbs kg	26,460 12 000	26,460 12 000	26,460 12 000	26,460 12 000	26,460 12 000	26,460 12 000	26,460 12 000										
98 ft 30m	26,460 lbs – 98 ft 12 000 kg – 30m	lbs kg	26,460 12 000	26,460 12 000	26,460 12 000	26,460 12 000	26,460 12 000												



Lifting Capacity



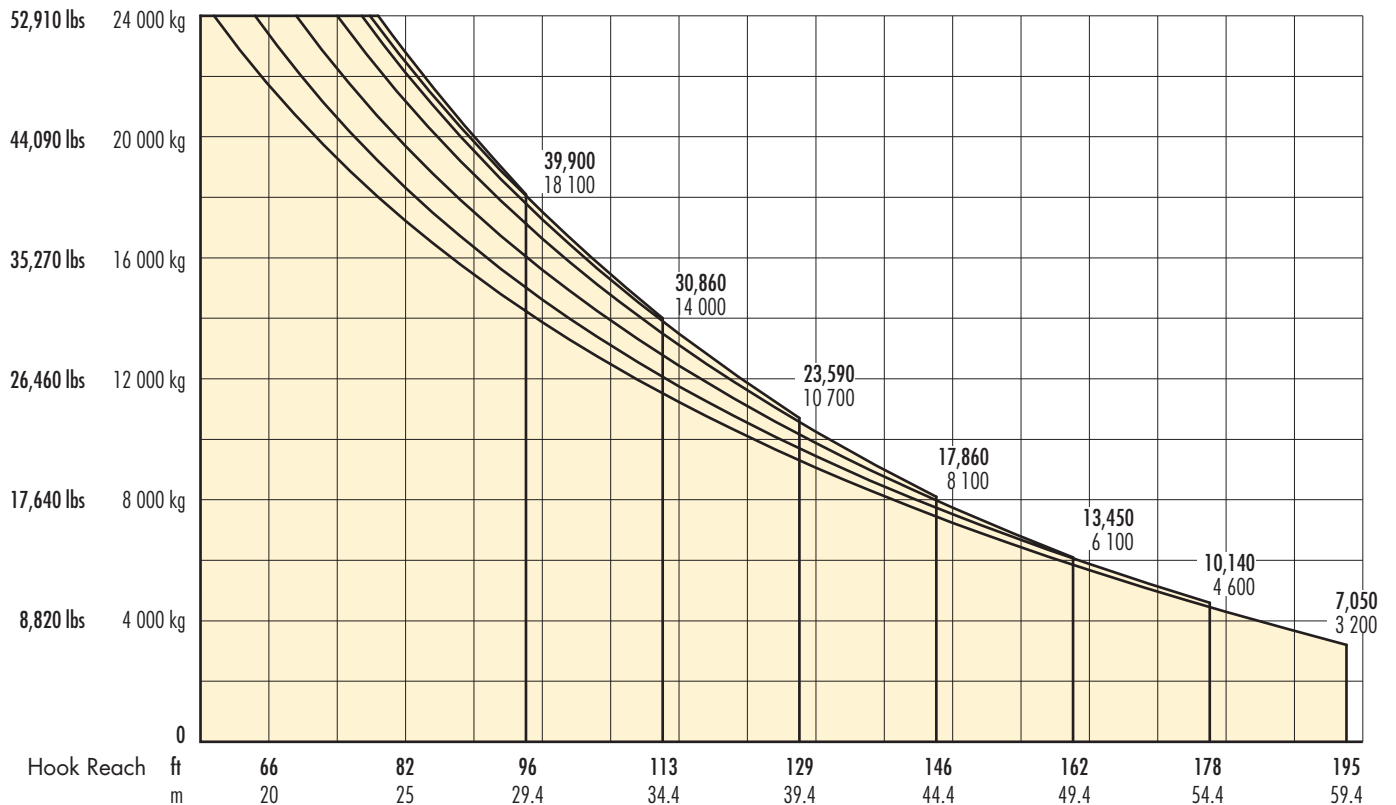
IMPORTANT: Litronic® cranes are equipped with Liebherr's state of the art PLC system that provides precise monitoring, control and coordination of all crane functions. Contact Morrow for more information regarding the many features of the 357 HC-L 12/24 Litronic tower crane.

Radius and capacities two-part operation

Boom Length	Hook Reach	Maximum Capacity – Radius	ft m	74 22.5	82 25	90 27.5	98 30	107 32.5	115 35	123 37.5	131 40	139 42.5	148 45	156 47.5	164 50	172 52.5	180 55	189 57.5	197 60	
197 ft 60m	195 ft 59.4m	52,910 lbs – 59 ft 24 000 kg – 18m	lbs kg	42,500 19 280	37,960 17 220	34,040 15 440	30,580 13 870	27,510 12 480	24,760 11 230	22,270 10 100	20,000 9 070	17,900 8 120	15,960 7 240	14,180 6 430	12,520 5 680	10,960 4 970	9,480 4 300	8,080 3 670	7,050 3 200	
180 ft 55m	178 ft 54.4m	52,910 lbs – 64 ft 24 000 kg – 19.5m	lbs kg	45,480 20 630	40,390 18 320	36,020 16 340	32,230 14 620	28,900 13 100	25,930 11 760	23,240 10 540	20,810 9 440	18,610 8 440	16,580 7 520	14,700 6 670	12,960 5 880	11,330 5 140	10,140 4 600			
164 ft 50m	162 ft 49.4m	52,910 lbs – 69 ft 24 000 kg – 21m	lbs kg	49,030 22 240	43,410 19 690	38,600 17 510	34,410 15 610	30,710 13 930	27,430 12 440	24,470 11 100	21,780 9 880	19,330 8 770	17,060 7 740	14,950 6 780	13,450 6 100					
148 ft 45m	146 ft 44.4m	52,910 lbs – 74 ft 24 000 kg – 22.5m	lbs kg	52,910 24 000	44,140 21 170	37,520 18 740	32,340 16 630	29,450 14 770	25,790 13 110	23,720 11 620	20,990 10 250	19,810 8 990	17,860 8 100							
131 ft 40m	129 ft 39.4m	52,910 lbs – 77 ft 24 000 kg – 23.4m	lbs kg	52,910 24 000	48,770 22 120	43,060 19 530	38,070 17 270	33,660 15 270	29,740 13 490	26,170 11 870	23,590 10 700									
115 ft 35m	113 ft 34.4m	52,910 lbs – 78 ft 24 000 kg – 23.7m	lbs kg	52,910 24 000	49,540 22 470	43,720 19 830	38,620 17 520	34,080 15 460	30,860 14 000											
98 ft 30m	96 ft 29.4m	52,910 lbs – 79 ft 24 000 kg – 24m	lbs kg	52,910 24 000	50,240 22 790	44,310 20 100	39,900 18 100													

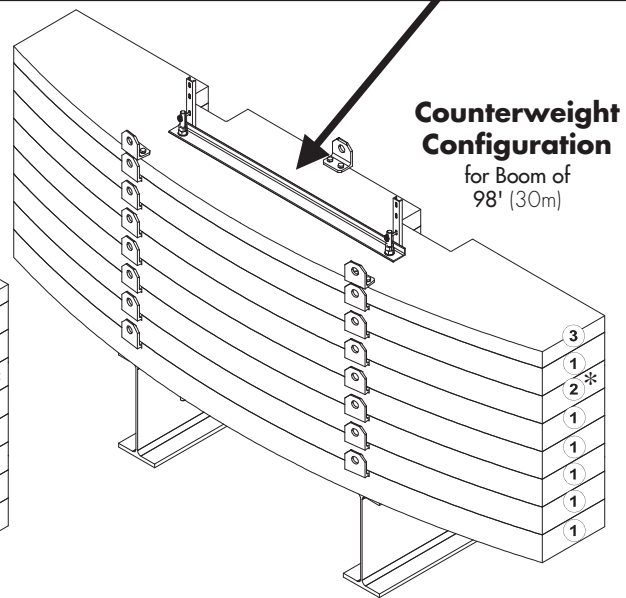
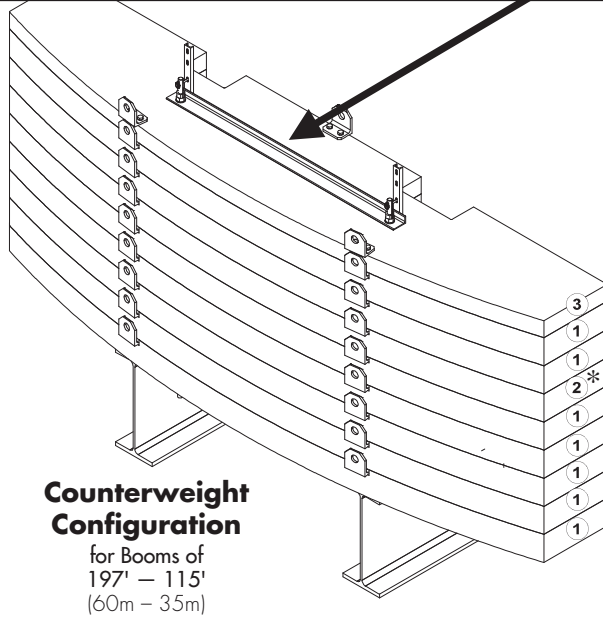


Lifting Capacity



Counterweights (Steel)

Boom length	197' – 115' (60m – 35m)	98' (30m)
No. of counterweights required	7 x ① + 1 x ② + 1 x ③	6 x ① + 1 x ② + 1 x ③
Total weight	92,810 lbs	82,010 lbs
Total weight	42 100 kg	37 200 kg

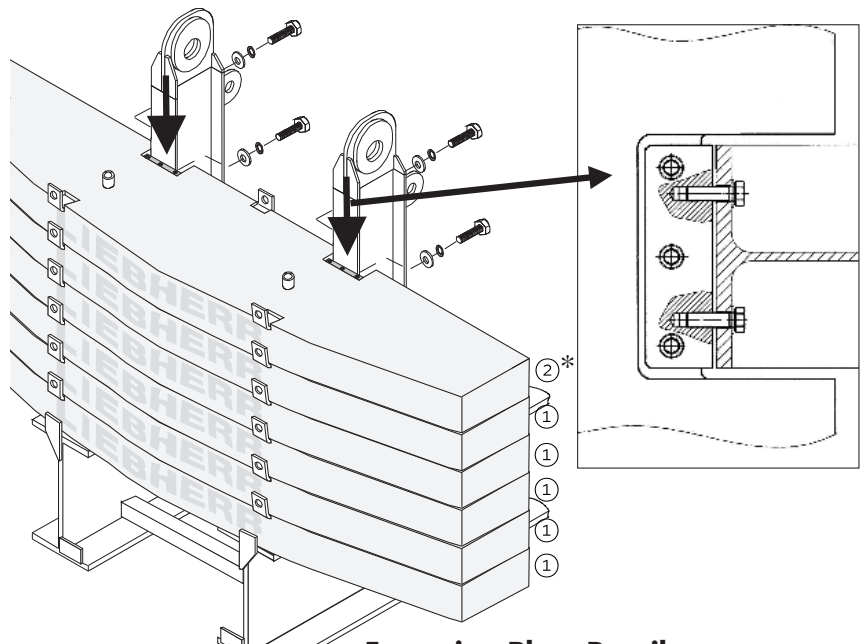


***IMPORTANT:** Six (6) counterweights must be installed and secured before the boom is attached. Ballast blocks ② with fastening plates secured in the openings shown must be in the sixth position.

NOTE: Weights of the steel counterweight blocks are: ①=10,800 lbs (4 900 kg), ②=10,800 lbs (4 900 kg) and ③=6,390 lbs (2 900 kg) each.

Block type 2 is installed after placing the first five type 1 blocks. Block type 2 has two fastening plates that bolt the six initial counterweight blocks to the gear platform prior to attaching the boom. Once the boom is installed, the rest of the counterweight blocks are to be added.

Counterweight figures displayed in the chart above are for crane with hoist unit WiV 300 VZ 412. If another hoist unit is installed, refer to the 357 HCL 12 Operation Manual or contact MORROW for information.

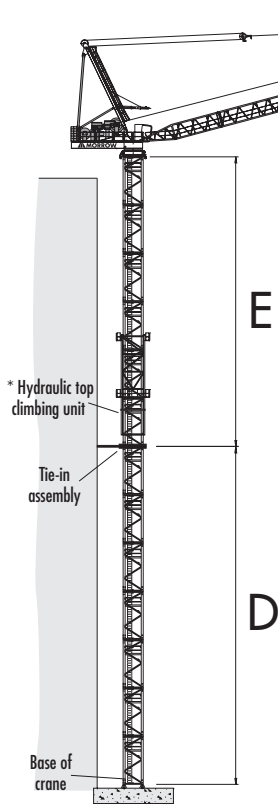


Fastening Plate Details
for counterweight Block type 2
(see Note this page.)

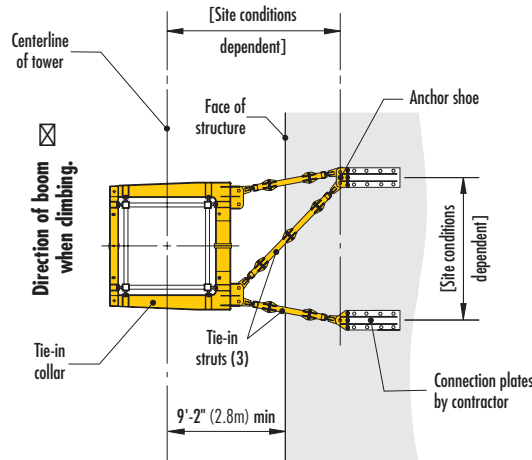
Tie-in details

IMPORTANT: Please consult crane operation manual before erecting, operating, climbing, servicing and dismantling.

* Lower the top climbing unit to the uppermost tie-in prior to operating crane at maximum tower configuration.

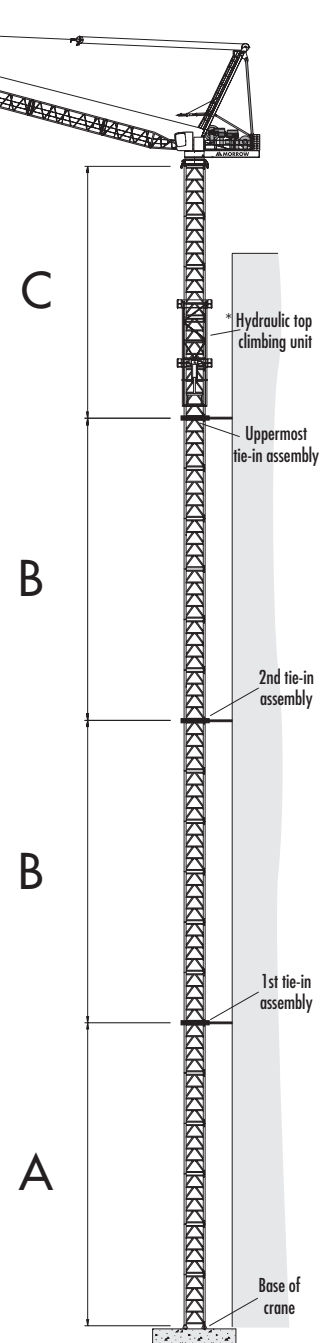


with 550 HC Tower
Tied to structure with 1 tie-in



TIE-IN ASSEMBLY
Plan View

NOTE: The tie-in assembly shown is an example of a typical installation. Please note, however, that factors determining the installation of tie-in assemblies may vary due to project specific conditions. Please contact Morrow for information regarding dimensions, reaction forces and tie-in locations.



with 550 HC tower
Tied to structure with two or more tie-ins

Tower sections permitted with 1 tie-in **

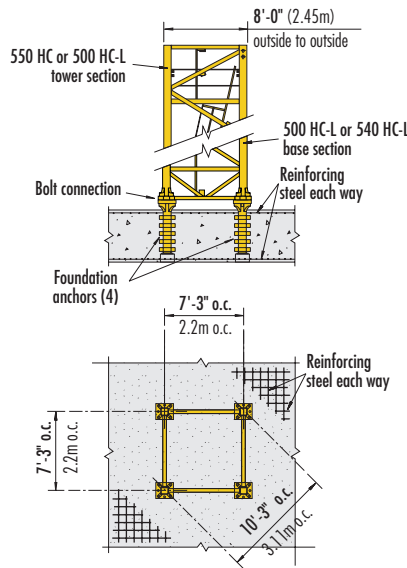
Boom Length	197' (60m)	180' (55m)	164' (50m)	148' (45m)	131' (40m)	115' (35m)	98' (30m)
Above top tie-in (E)	7 max-3 min	7 max-3 min	8 max-3 min	8 max-3 min	9 max-3 min	9 max-3 min	10 max-3 min
Base to 1st tie-in (D)	9 max-4 min	9 max-4 min	9 max-4 min	9 max-4 min	9 max-4 min	9 max-4 min	9 max-4 min

Tower sections permitted with 2 or more tie-ins **

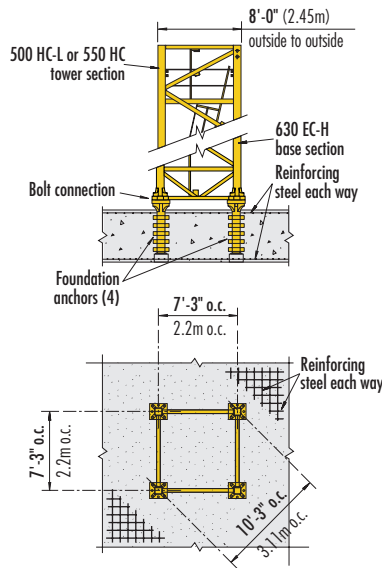
Boom Length	197' (60m)	180' (55m)	164' (50m)	148' (45m)	131' (40m)	115' (35m)	98' (30m)
Above top tie-in (C)	6 max-3 min	7 max-3 min	7 max-3 min	8 max-3 min	8 max-3 min	9 max-3 min	9 max-3 min
Between tie-ins (B)	9 max-4 min	9 max-4 min	9 max-4 min	9 max-4 min	9 max-4 min	9 max-4 min	9 max-4 min
Base to 1st tie-in (A)	9 max-4 min	9 max-4 min	9 max-4 min	9 max-4 min	9 max-4 min	9 max-4 min	9 max-4 min

****NOTE!** Charts above apply only to 357 HC-L 12/24 configurations with 550 HC tower. Other configurations available. Restrictions may apply; contact Morrow engineering.

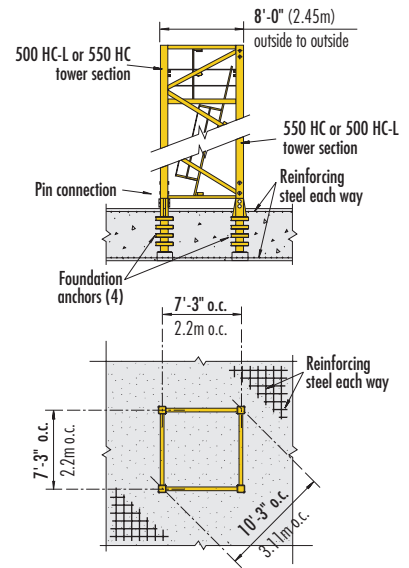
Foundation details on concrete footing



**with 500 HC-L
or 540 HC-L Base Section**

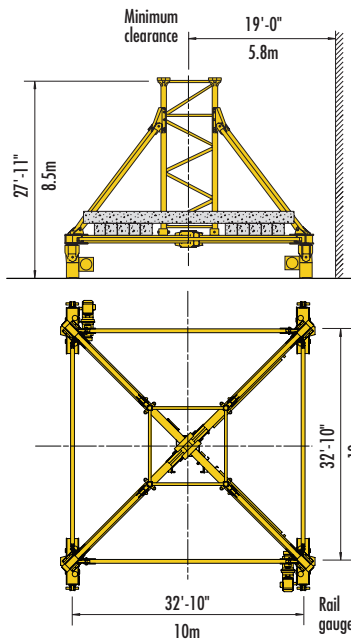


**with 630 EC-H
Base Section**

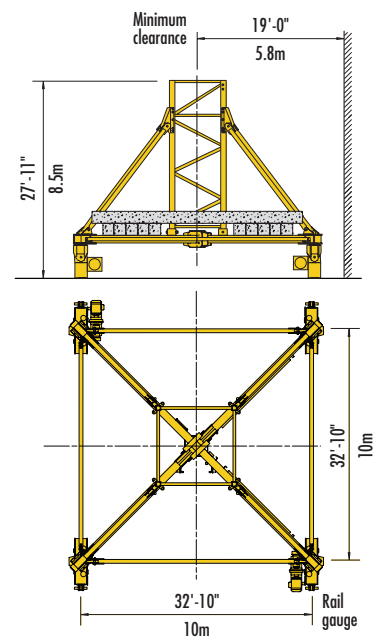


**with 550 HC or 500 HC-L
Tower Section**

Undercarriage details on rail-travelling undercarriage



630 EC-H



550 HC

NOTE: For information regarding rail-travelling, static undercarriages and central ballast configurations, see 357 HC-L Litronic Operation Manual.

Hoist speed and capacity

Hoist Unit	WiW 300 VZ 412		1-Part Line			
	Speed	Capacity	Line Speed	Capacity	Line Speed	
147 hp (110 kW) AC hoist unit Variable frequency drive 3-speed gearbox Electromagnetic gear shifting 1P - 4L435 2P - 4L217	1	up to 26,460 lbs	@ 148 fpm	up to 12 000 kg	@ 45 m/min	
		up to 11,680 lbs	@ 272 fpm	up to 5 300 kg	@ 83 m/min	
		2	up to 13,890 lbs	@ 256 fpm	up to 6 300 kg	@ 78 m/min
	2	up to 4,630 lbs	@ 472 fpm	up to 2 100 kg	@ 144 m/min	
		3	up to 6,610 lbs	@ 429 fpm	up to 3 000 kg	@ 131 m/min
		up to 660 lbs	@ 787 fpm	up to 300 kg	@ 240 m/min	
	2-Part Line					
	1	up to 52,910 lbs	@ 75 fpm	up to 24 000 kg	@ 23 m/min	
		up to 24,690 lbs	@ 138 fpm	up to 11 200 kg	@ 42 m/min	
2	up to 29,100 lbs	@ 128 fpm	up to 13 200 kg	@ 39 m/min		
	up to 12,350 lbs	@ 236 fpm	up to 5 600 kg	@ 72 m/min		
3	up to 15,650 lbs	@ 213 fpm	up to 7 100 kg	@ 65 m/min		
	up to 5,070 lbs	@ 394 fpm	up to 2 300 kg	@ 120 m/min		

NOTE: Capacities and line speeds indicated will vary depending on the amount of hoist rope installed. This crane model may be equipped with a hoist unit other than that specified in the data above. To verify, check the serial number of the crane and refer to the Liebherr 357 HC-L Operation Manual for additional information.

Motor information

Drive Unit	Horsepower	Kilowatts	Speed*
Luffing* (VFD)	147 hp	110 kW	1.7 min
Swing (VFD)	2 x 10 hp	2 x 7.5 kW	0.7 rpm
Rail travelling	Information available upon request		

* **NOTE:** Luffing speed shown is for a typical working range of 15° to 75° with load. Luffing speeds are variable. Factors such as hook load, boom length will affect speed.

Power requirements

Power supply: 3-phase 480 V, 60 Hz; 3-wire plus ground; no Neutral.

480 V phase-phase, 277 V each phase to ground with 120° phase shift between phases.

Service size: 300 Amperes

NOTES:

1. For electric power provided by an electric utility, do not use open Delta transformers.
2. For electric power provided by a generator, the minimum generator size required is 350 kW. Verify the generator provided is suitable for use with variable frequency drives (VFDs). A properly sized generator is critical to the safe operation of the crane.

Specifications subject to change without prior notice. For additional information, contact MORROW.

Hoist speed and capacity

Hoist Unit	WiW 320 VZ 403				
	1-Part Line				
215 hp (160 kW) AC hoist unit Variable frequency drive 3-speed gearbox Electromagnetic gear shifting 1P - 4L435 2P - 4L217	Speed	Capacity	Line Speed	Capacity	Line Speed
	1	up to 26,460 lbs up to 14,110 lbs	@ 223 fpm @ 341 fpm	up to 12 000 kg up to 6 400 kg	@ 68 m/min @ 104 m/min
	2	up to 14,550 lbs up to 6,830 lbs	@ 364 fpm @ 558 fpm	up to 6 600 kg up to 3 100 kg	@ 111 m/min @ 170 m/min
	3	up to 6,170 lbs up to 1,320 lbs	@ 650 fpm @ 994 fpm	up to 2 800 kg up to 600 kg	@ 198 m/min @ 303 m/min
	2-Part Line				
	1	up to 52,910 lbs up to 29,320 lbs	@ 112 fpm @ 171 fpm	up to 24 000 kg up to 13 300 kg	@ 34 m/min @ 52 m/min
	2	up to 29,980 lbs up to 16,090 lbs	@ 180 fpm @ 279 fpm	up to 13 600 kg up to 7 300 kg	@ 55 m/min @ 85 m/min
	3	up to 14,770 lbs up to 6,610 lbs	@ 325 fpm @ 499 fpm	up to 6 700 kg up to 3 000 kg	@ 99 m/min @ 152 m/min

NOTE: Capacities and line speeds indicated will vary depending on the amount of hoist rope installed. This crane model may be equipped with a hoist unit other than that specified in the data above. To verify, check the serial number of the crane and refer to the Liebherr 357 HC-L Operation Manual for additional information.

Motor information

Drive Unit	Horsepower	Kilowatts	Speed*
Luffing* (VFD)	147 hp	110 kW	1.7 min
Swing (VFD)	2 x 10 hp	2 x 7.5 kW	0.7 rpm
Rail travelling	Information available upon request		

* **NOTE:** Luffing speed shown is for a typical working range of 15° to 75° with load. Luffing speeds are variable. Factors such as hook load, boom length will affect speed.

Power requirements

Power supply: 3-phase 480 V, 60 Hz; 3-wire plus ground; no Neutral.

480 V phase-phase, 277 V each phase to ground with 120° phase shift between phases.


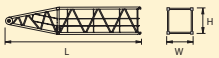
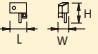
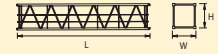
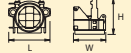
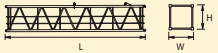
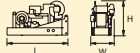
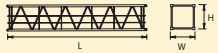
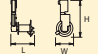

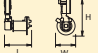
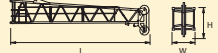

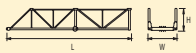
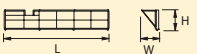

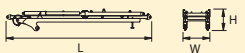
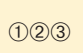
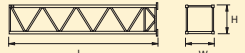
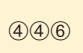
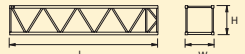



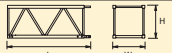



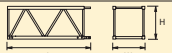

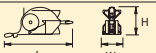
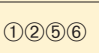

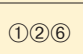
Service size: 350 Amperes

NOTES:

1. For electric power provided by an electric utility, do not use open Delta transformers.
2. For electric power provided by a generator, the minimum generator size required is 400 kW. Verify the generator provided is suitable for use with variable frequency drives (VFDs). A properly sized generator is critical to the safe operation of the crane.

Specifications subject to change without prior notice. For additional information, contact MORROW.

Component List

Description	Dimensions L x W x H	Weight	Description	Dimensions L x W x H	Weight
Slewing Ring Support 	9'-6" x 8'-1" x 7'-1" 2.9m x 2.47m x 2.15m	9,410 lbs 4 270 kg	Butt Section ① 611 	32'-6" x 6'-3" x 6'-3" 9.91m x 1.9m x 1.9m	5,620 lbs 2 550 kg
Connection Brackets (4) (each) 	3'-8" x 2'-4" x 10" 1.13m x 0.7m x .25m	470 lbs 215 kg	Boom Section ② 612 	29'-4" x 6'-3" x 6'-11" 8.95m x 1.9m x 2.1m	4,670 lbs 2 120 kg
Slewing Platform ¹ plus swing motors 	9'-8" x 7'-5" x 6'-1" 2.95m x 2.27m x 1.85m	16,250 lbs 7 370 kg	Boom Section ③ 621 	34'-9" x 6'-3" x 6'-11" 10.6m x 1.9m x 2.1m	4,960 lbs 2 250 kg
Machine Deck with electrical panels 	22'-8" x 7'-3" x 8'-0" 6.9m x 2.2m x 2.45m	19,180 lbs 8 700 kg	Boom Section ④ 631 	34'-9" x 6'-3" x 6'-3" 10.6m x 1.9m x 1.9m	3,640 lbs 1 650 kg
Hoist Gear ² 147 hp (110 kW) 	10'-6" x 8'-0" x 5'-9" 3.2m x 2.45m x 1.75m	14,990 lbs 6 800 kg	Boom Section ⑤ 622 	18'-0" x 6'-3" x 6'-3" 5.5m x 1.9m x 1.9m	1,980 lbs 900 kg
Luffing Gear (w/wire rope) 147 hp (110 kW) 	9'-2" x 7'-3" x 5'-3" 2.8m x 2.2m x 1.6m	11 020 lbs 5 000 kg	Tip Section ⑥ 641 	36'-5" x 6'-7" x 6'-11" 11.1m x 2m x 2.1m	6,720 lbs 3 050 kg
Operator's Cab with access platform 	17'-5" x 6'-3" x 8'-5" 5.3m x 1.9m x 2.57m	3,640 lbs 1 650 kg	Top Climbing Unit ⁴ Panels (2) 	41'-4" x 9'-8" x 5'-9" 12.6m x 2.95m x 1.75m	17,415 lbs 7 900 kg
Platforms (3) for machine deck 	18'-1" x 3'-7" x 6'-1" 5.5m x 1.1m x 1.85m	1,650 lbs 750 kg	Top Climbing Unit ⁴ Hydraulics/etc. 	8'-6" x 4'-11" x 2'-0" 2.6m x 1.5m x 0.6m	6,830 lbs 3 100 kg
Gantry ³ (complete) 	39'-3" x 7'-7" x 4'-11" 11.97m x 2.3m x 1.5m	12,200 lbs 5 535 kg	Boom Assembly Part 1 ⁵ 197-ft (60m) boom 	95'-2" x 6'-3" x 6'-11" 29m x 1.9m x 2.1m	20,060 lbs 9 100 kg
Base Section 630 EC-H 	40'-9" x 8'-10" x 8'-10" 12.42m x 2.68m x 2.68m	31,010 lbs 14 065 kg	Boom Assembly Part 2 ⁶ 197-ft (60m) boom 	104'-4" x 6'-7" x 6'-11" 31.8m x 2m x 2.1m	16,090 lbs 7 300 kg
Base Section 500 HC-L 	40'-9" x 8'-10" x 8'-10" 12.42m x 2.68m x 2.68m	37,850 lbs 17 170 kg	Boom Assembly Part 1 ⁶ 180-ft (55m) – 98-ft (30m) booms 	61'-4" x 6'-3" x 6'-11" 18.7m x 1.9m x 2.1m	13,890 lbs 6 300 kg
Base Section 540 HC-L 	40'-9" x 8'-10" x 8'-10" 12.42m x 2.68m x 2.68m	31,880 lbs 14 460 kg	Boom Assembly Part 2 ⁶ 180-ft (55m) boom 	121'-5" x 6'-7" x 6'-11" 37m x 2m x 2.1m	19,840 lbs 9 000 kg
Std Tower Section 550 HC 	20'-7" x 8'-0" x 8'-0" 6.28m x 2.45m x 2.45m	14,280 lbs 6 480 kg	Boom Assembly Part 2 ⁶ 164-ft (50m) boom 	104'-4" x 6'-7" x 6'-11" 31.8m x 2m x 2.1m	17,420 lbs 7 900 kg
Long Section 550 HC 	39'-8" x 8'-0" x 8'-0" 12.1m x 2.45m x 2.45m	23,480 lbs 10 650 kg	Boom Assembly Part 2 ⁶ 148-ft (45m) boom 	87'-3" x 6'-7" x 6'-11" 26.6m x 2m x 2.1m	15,650 lbs 7 100 kg
Tower Section 500 HC-L 	20'-7" x 8'-0" x 8'-0" 6.28m x 2.45m x 2.45m	17,900 lbs 8 120 kg	Boom Assembly Complete ⁷ 131-ft (40m) boom 	131'-11" x 6'-7" x 6'-11" 40.2m x 2m x 2.1m	26,240 lbs 11 900 kg
Hook Block 	7'-10" x 4'-9" x 2'-8" 2.4m x 1.45m x 0.8m	3,420 lbs 1 550 kg	Boom Assembly Complete ⁷ 115-ft (35m) boom 	114'-10" x 6'-7" x 6'-11" 35m x 2m x 2.1m	23,150 lbs 10 500 kg
Luffing Rope Sheave Block 	4'-11" x 3'-11" x 3'-7" 1.5m x 1.2m x 1.1m	1,320 lbs 600 kg	Boom Assembly Complete ⁷ 98-ft (30m) boom 	97'-9" x 6'-7" x 6'-11" 29.8m x 2m x 2.1m	20,500 lbs 9 300 kg

NOTE: Weights and dimensions are approximate. Scale components before lifting. Consult operation manual before erecting, operating, servicing and dismantling crane.

¹ Slewing platform can be split into four parts i.e., slewing platform, slewing ring and two swing drives.

² Wire rope included. Typical rope installation; 985 feet (300m) at 2,315 lbs (1 050 kg).

³ Gantry (boom retaining frame) can be split into component parts.

⁴ Top climbing unit complete includes front and rear panel, hydraulic system, ladders and platforms with a total weight of 22,420 lbs (10 170 kg).

⁵ Boom assembly Part 1 includes boom sections 1, 2 and 3 and erection wire rope for the 197-ft (60m) boom. For all other booms, Part 1 includes boom sections 1 and 2 plus erection rope.

⁶ Boom assembly Part 2 includes boom sections and pendent bars.

⁷ Complete boom assemblies can be split into two parts.