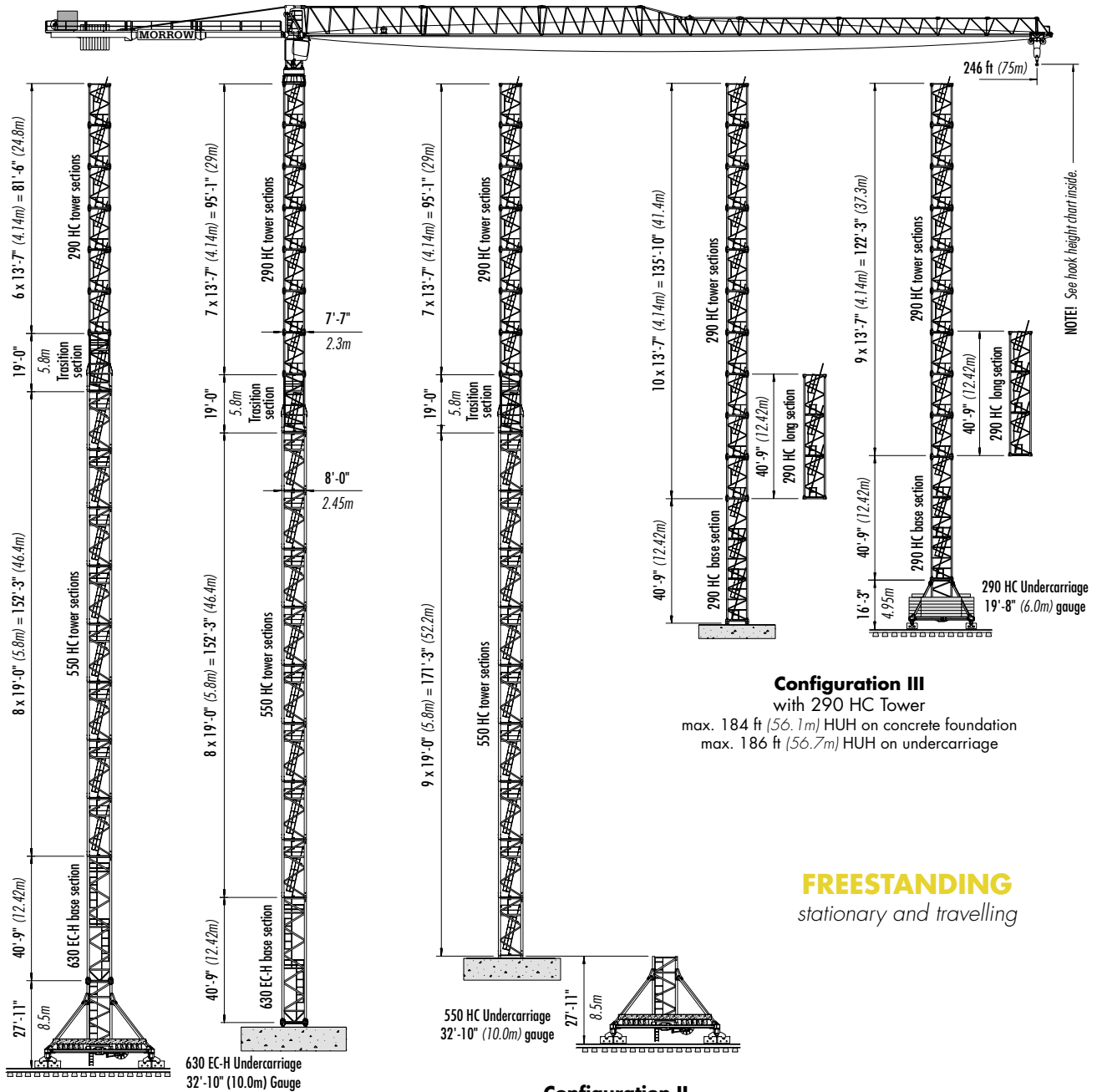


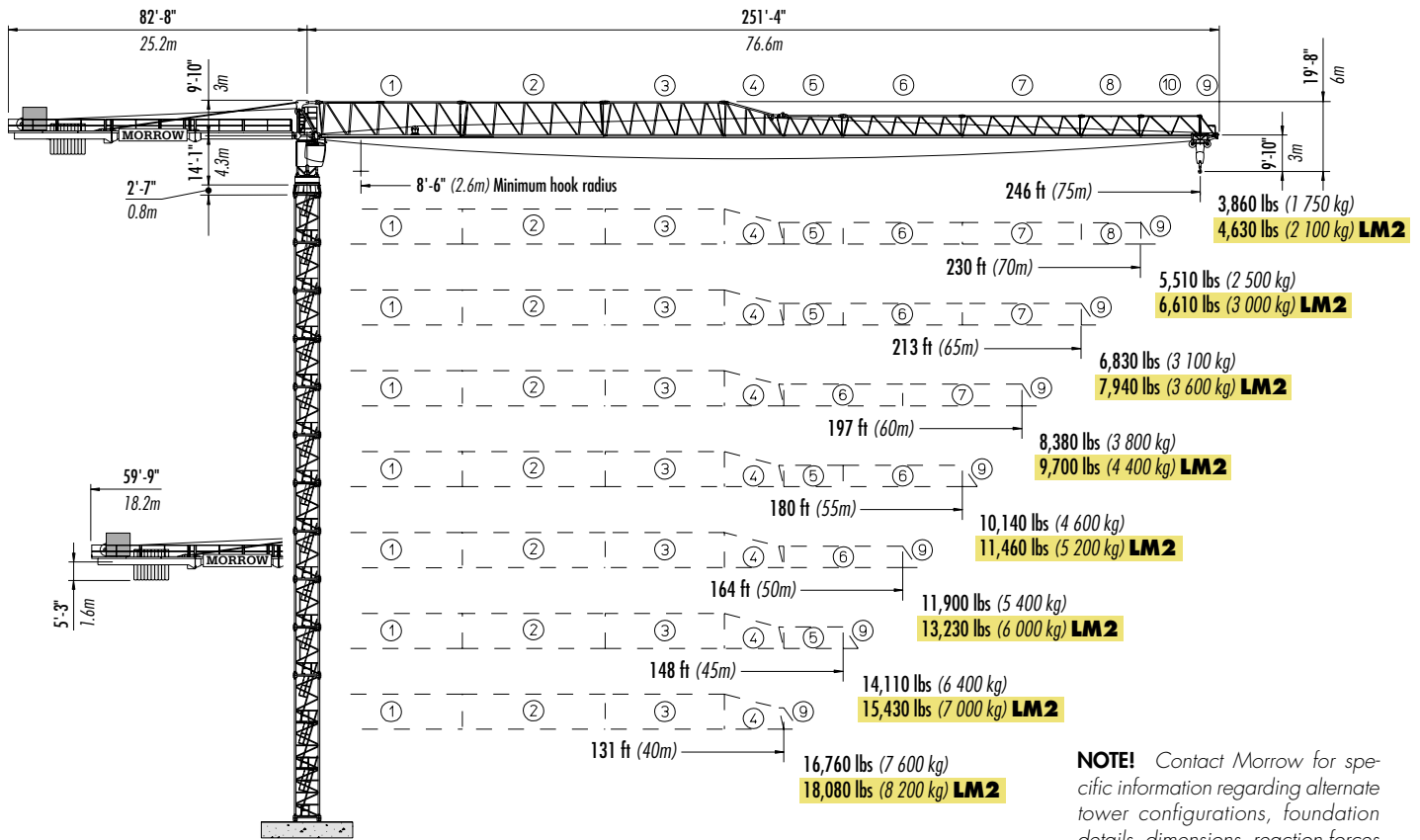
LIEBHERR 316 EC-B12 Litronic®

TOWER CRANE



Morrow Equipment

LIEBHERR 316 EC-B 12 Litronic®



FREESTANDING with 290 HC Tower stationary

NOTE! Contact Morrow for specific information regarding alternate tower configurations, foundation details, dimensions, reaction forces and slab opening requirements.

HOOK HEIGHTS

| No. of Tower Elements | Tower Configuration I | Hook Height Concrete Foundation | | Hook Height 10m Undercarriage | |
|-----------------------|-----------------------|---------------------------------|-------------------|-------------------------------|--------------------|
| | | ft | m | ft | m |
| 1 | 630 EC-H BS | 48 | 14.7 | 76 | 23 |
| 2 | 550 HC STS | 67 | 20.5 | 95 | 28.8 |
| 3 | 550 HC STS | 86 | 26.3 | 114 | 34.6 |
| 4 | 550 HC STS | 105 | 32.1 | 133 | 40.4 |
| 5 | 550 HC STS | 125 | 37.9 | 152 | 46.2 |
| 6 | 550 HC STS | 144 | 43.7 | 171 | 52 |
| 7 | 550 HC STS | 163 | 49.5 | 190 | 57.8 |
| 8 | 550 HC STS | 182 | 55.3 | 209 | 63.6 |
| 9 | 550 HC STS | 201 | 61.1 | 228 | 69.4 |
| TR | Transition | 220 | 66.9 | 247 | 75.2 |
| 1 | 290 HC STS | 233 | 71.1 | 260 | 79.4 |
| 2 | 290 HC STS | 247 | 75.2 | 274 | 83.5 |
| 3 | 290 HC STS | 260 | 79.4 | 288 | 87.6 |
| 4 | 290 HC STS | 274 | 83.5 | 301 | 91.8 |
| 5 | 290 HC STS | 288 | 87.6 | 315 | 95.9 |
| 6 | 290 HC STS | 301 | 91.8 | 328 ¹ | 100.1 ¹ |
| 7 ^{3,5} | 290 HC STS | 315 ¹ | 95.9 ¹ | | |

| No. of Tower Elements | Tower Configuration II | Hook Height Concrete Foundation | | Hook Height 10.0m Undercarriage | |
|-----------------------|------------------------|---------------------------------|-------------------|---------------------------------|---------------------|
| | | ft | m | ft | m |
| 1 | 550 HC STS | 27 | 8.3 | 54 | 16.4 |
| 2 | 550 HC STS | 46 | 14.1 | 73 | 22.2 |
| 3 | 550 HC STS | 65 | 19.9 | 92 | 28 |
| 4 | 550 HC STS | 84 | 25.7 | 111 | 33.8 |
| 5 | 550 HC STS | 103 | 31.5 | 130 | 39.6 |
| 6 | 550 HC STS | 122 | 37.3 | 149 | 45.4 |
| 7 | 550 HC STS | 141 | 43.1 | 168 | 51.2 |
| 8 | 550 HC STS | 160 | 48.9 | 187 | 57 |
| 9 | 550 HC STS | 179 | 54.7 | 206 | 62.8 |
| TR | Transition | 198 | 60.5 | 225 | 68.6 |
| 1 | 290 HC STS | 212 | 64.7 | 239 | 72.7 |
| 2 | 290 HC STS | 226 | 68.8 | 252 | 76.9 |
| 3 | 290 HC STS | 239 | 72.9 | 266 | 81 |
| 4 | 290 HC STS | 253 | 77.1 | 279 | 85.2 |
| 5 | 290 HC STS | 267 | 81.2 | 293 | 89.3 |
| 6 | 290 HC STS | 280 | 85.4 | 307 | 93.4 |
| 7 ⁵ | 290 HC STS | 294 ¹ | 89.5 ¹ | 320 ^{1,4} | 97.6 ^{1,4} |

| No. of Tower Sections | Tower Configuration III | Hook Height Concrete Foundation | | Hook Height 6m Undercarriage | |
|-----------------------|-------------------------|---------------------------------|-------------------|------------------------------|---------------------|
| | | ft | m | ft | m |
| 0 | 290 HC BS | 48 | 14.7 | 64 | 19.4 |
| 1 ⁶ | 290 HC STS | 62 | 18.9 | 77 | 23.6 |
| 2 | 290 HC STS | 75 | 23 | 91 | 27.7 |
| 3 | 290 HC STS | 89 | 27.2 | 105 | 31.9 |
| 4 | 290 HC STS | 103 | 31.3 | 118 | 36 |
| 5 | 290 HC STS | 116 | 35.4 | 132 | 40.1 |
| 6 | 290 HC STS | 130 | 39.6 | 145 | 44.3 |
| 7 | 290 HC STS | 143 | 43.7 | 159 | 48.4 |
| 8 | 290 HC STS | 157 | 47.9 | 173 | 52.6 |
| 9 | 290 HC STS | 171 ² | 52 ² | 186 ^{2,4} | 56.7 ^{2,4} |
| 10 ^{3,5,6} | 290 HC STS | 184 ² | 56.1 ² | | |

¹ Remove top climbing unit from crane prior to operating crane at maximum hook height.

² Lower top climbing unit to base prior to operating crane.

³ Crane must not be operated at this hook height if wind speed exceeds 40 mph (64 kph).

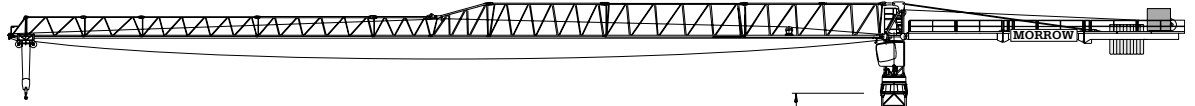
⁴ No crane operations permitted when travelling.

⁵ Heavy Lift Mode (LM2) NOT permitted.

⁶ Permitted ONLY with reinforced tower section (no 1) and with wind speeds less than 40 mph (64 kph).

LIEBHERR 316 EC-B 12 Litronic®

NOTE! For information regarding bottom climbing inside of structure, please contact Morrow.

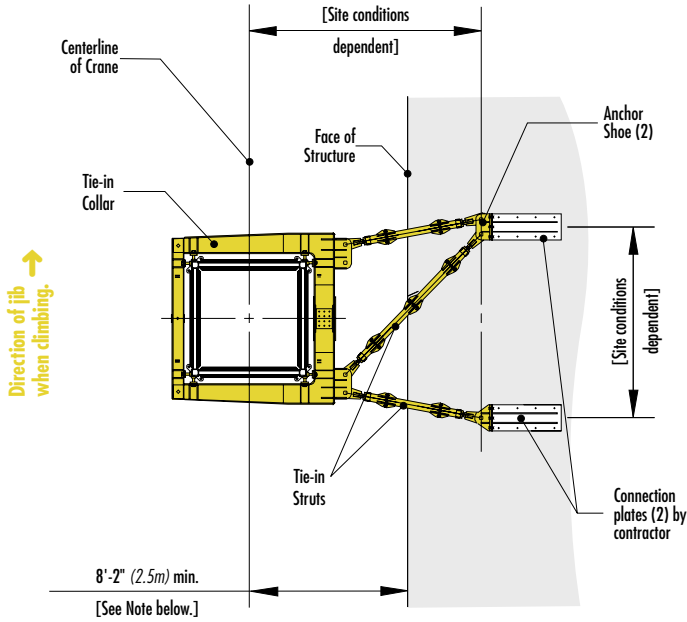


NOTE! Restrictions apply; please consult Operations Manual or Morrow engineering.

¹ **LM1:** For hook heights below 330 ft (100m), a maximum of 9 tower sections may be installed above uppermost tie-in location. If winds exceed 40 mph (64 kph) and/or hook height exceeds 330 ft (100m), a maximum of 8 tower sections may be installed.

² **LM2:** A maximum of 8 tower sections may be installed above uppermost tie-in location.

** Lower top climbing unit to upper tie-in assembly prior to operating crane.



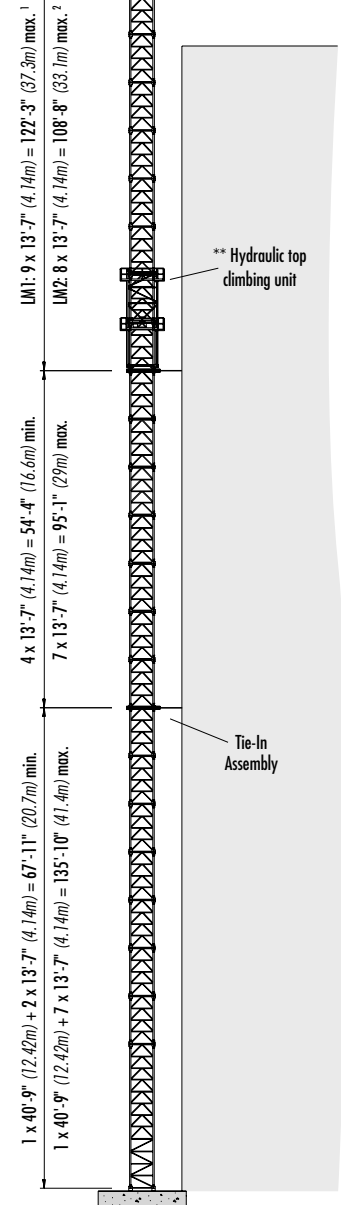
TIE-IN ASSEMBLY
with 290 HC Tower Sections
plan view

NOTE! The tie-in assembly shown is an example of a typical installation when using 290HC tower. Please note, however, that factors determining the installation of tie-in assemblies may vary due to project specific requirements.

Verify all dimensions.

Contact Morrow for additional information regarding dimensions, alternate tower configurations, reactions forces, tie-in installation and slab opening requirements.

Consult Operations Manual before erecting, operating, servicing or dismantling crane.



TOP CLIMBING
with 290 HC Tower Sections
tied to structure

Radius and Capacities

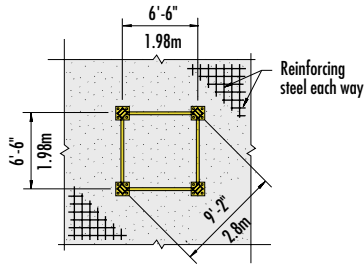
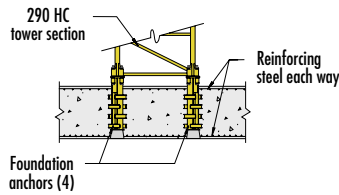
| 2-Part Line | Hook Radius | Jib Tip Radius | Maximum Capacity – Radius | ft m | 62 19 | 72 22 | 82 25 | 92 28 | 102 31 | 121 37 | 131 40 | 148 45 | 164 50 | 180 55 | 197 60 | 213 65 | 230 70 | 246 75 | |
|-------------|---------------|-------------------|---|-----------|------------------|------------------|------------------|------------------|------------------|-----------------|-----------------|-----------------|-----------------|-----------------|----------------|----------------|----------------|----------------|------------|
| | 246 ft 75m | 251'-4" 76.6m | 26,460 lbs – 56 ft 12 000 kg – 17m | lbs kg | 23,280 10 560 | 19,690 8 930 | 16,950 7 690 | 14,840 6 730 | 13,120 5 950 | 10,540 4 780 | 9,550 4 330 | 8,180 3 710 | 7,100 3 220 | 6,220 2 820 | 5,490 2 490 | 4,850 2 200 | 4,320 1 960 | 3,860 1 750 | |
| | 230 ft 70m | 234'-11" 71.6m | 26,460 lbs – 65 ft 12 000 kg – 19.8m | lbs kg | 26,460 12 000 | 23,480 10 650 | 20,300 9 210 | 17,810 8 080 | 15,830 7 180 | 12,810 5 810 | 11,640 5 280 | 10,050 4 560 | 8,770 3 980 | 7,740 3 510 | 6,880 3 120 | 6,130 2 780 | 5,510 2 500 | | |
| | 213 ft 65m | 218'-6" 66.6m | 26,460 lbs – 70 ft 12 000 kg – 21.4m | lbs kg | 26,460 12 000 | 25,570 11 600 | 22,130 10 040 | 19,440 8 820 | 17,280 7 840 | 14,040 6 370 | 12,760 5 790 | 11,050 5 010 | 9,680 4 390 | 8,550 3 880 | 7,630 3 460 | 6,830 3 100 | | | |
| | 197 ft 60m | 202'-1" 61.6m | 26,460 lbs – 75 ft 12 000 kg – 22.9m | lbs kg | 26,460 12 000 | 26,260 12 000 | 23,960 10 870 | 21,080 9 560 | 18,760 8 510 | 15,260 6 920 | 13,910 6 310 | 12,060 5 470 | 10,580 4 800 | 9,390 4 260 | 8,380 3 800 | | | | |
| | 180 ft 55m | 185'-8" 56.6m | 26,460 lbs – 80 ft 12 000 kg – 24.4m | lbs kg | 26,460 12 000 | 26,460 12 000 | 25,660 11 640 | 22,580 10 240 | 20,130 9 130 | 16,400 7 440 | 14,970 6 790 | 12,990 5 890 | 11,420 5 180 | 10,140 4 600 | | | | | |
| | 164 ft 50m | 169'-3" 51.6m | 26,460 lbs – 83 ft 12 000 kg – 25.2m | lbs kg | 26,460 12 000 | 26,460 12 000 | 26,460 12 000 | 23,460 10 640 | 20,900 9 480 | 17,040 7 730 | 15,560 7 060 | 13,540 6 140 | 11,900 5 400 | | | | | | |
| | 148 ft 45m | 152'-11" 46.6m | 26,460 lbs – 86 ft 12 000 kg – 26.1m | lbs kg | 26,460 12 000 | 26,460 12 000 | 26,460 12 000 | 24,380 11 060 | 21,740 9 860 | 17,750 8 050 | 16,230 7 360 | 14,110 6 400 | | | | | | | |
| | 131 ft 40m | 136'-6" 41.6m | 26,460 lbs – 88 ft 12 000 kg – 26.8m | lbs kg | 26,460 12 000 | 26,460 12 000 | 26,460 12 000 | 25,150 11 410 | 22,440 10 180 | 18,340 8 320 | 16,760 7 600 | | | | | | | | LM1 |

| 2-Part Line | Hook Radius | Jib Tip Radius | Maximum Capacity – Radius | ft m | 62 19 | 72 22 | 82 25 | 92 28 | 102 31 | 121 37 | 131 40 | 148 45 | 164 50 | 180 55 | 197 60 | 213 65 | 230 70 | 246 75 | |
|-------------|---------------|-------------------|---|-----------|------------------|------------------|------------------|------------------|------------------|-----------------|-----------------|-----------------|-----------------|-----------------|----------------|----------------|----------------|----------------|------------|
| | 246 ft 75m | 251'-4" 76.6m | 26,460 lbs – 62 ft 12 000 kg – 19m | lbs kg | 26,390 11 970 | 22,350 10 140 | 19,310 8 760 | 16,930 7 680 | 15,010 6 810 | 12,130 5 500 | 11,000 4 990 | 9,480 4 300 | 8,270 3 750 | 7,280 3 300 | 6,440 2 920 | 5,750 2 610 | 5,160 2 340 | 4,630 2 100 | |
| | 230 ft 70m | 234'-11" 71.6m | 26,460 lbs – 74 ft 12 000 kg – 22.5m | lbs kg | 26,460 12 000 | 26,460 12 000 | 23,440 10 630 | 20,590 9 340 | 18,320 8 310 | 14,900 6 760 | 13,580 6 160 | 11,770 5 340 | 10,320 4 680 | 9,150 4 150 | 8,160 3 700 | 7,320 3 320 | 6,610 3 000 | | |
| | 213 ft 65m | 218'-6" 66.6m | 26,460 lbs – 78 ft 12 000 kg – 23.8m | lbs kg | 26,460 12 000 | 26,460 12 000 | 25,040 11 360 | 22,020 9 990 | 19,620 8 900 | 15,980 7 250 | 14,570 6 610 | 12,650 5 740 | 11,110 5 040 | 9,850 4 470 | 8,820 4 000 | 7,940 3 600 | | | |
| | 197 ft 60m | 202'-1" 61.6m | 26,460 lbs – 84 ft 12 000 kg – 25.6m | lbs kg | 26,460 12 000 | 26,260 12 000 | 26,460 12 000 | 23,940 10 860 | 21,340 9 680 | 17,420 7 900 | 15,900 7 210 | 13,820 6 270 | 12,170 5 520 | 10,820 4 910 | 9,700 4 400 | | | | |
| | 180 ft 55m | 185'-8" 56.6m | 26,460 lbs – 88 ft 12 000 kg – 26.8m | lbs kg | 26,460 12 000 | 26,460 12 000 | 26,460 12 000 | 25,200 11 430 | 22,490 10 200 | 18,360 8 330 | 16,780 7 610 | 14,620 6 630 | 12,880 5 840 | 11,460 5 200 | | | | | |
| | 164 ft 50m | 169'-3" 51.6m | 26,460 lbs – 90 ft 12 000 kg – 27.4m | lbs kg | 26,460 12 000 | 26,460 12 000 | 26,460 12 000 | 25,840 11 720 | 23,040 10 450 | 18,850 8 550 | 17,220 7 810 | 14,990 6 800 | 13,230 6 000 | | | | | | |
| | 148 ft 45m | 152'-11" 46.6m | 26,460 lbs – 92 ft 12 000 kg – 28.1m | lbs kg | 26,460 12 000 | 26,460 12 000 | 26,460 12 000 | 26,460 12 000 | 23,680 10 740 | 19,380 8 790 | 17,700 8 030 | 15,430 7 000 | | | | | | | |
| | 131 ft 40m | 136'-6" 41.6m | 26,460 lbs – 94 ft 12 000 kg – 28.6m | lbs kg | 26,460 12 000 | 26,460 12 000 | 26,460 12 000 | 26,460 12 000 | 24,160 10 960 | 19,780 8 970 | 18,080 8 200 | | | | | | | | LM2 |

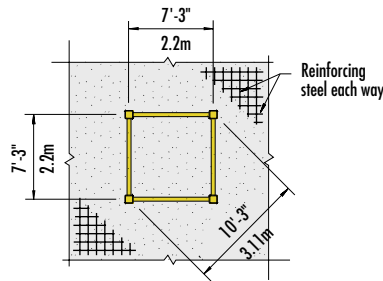
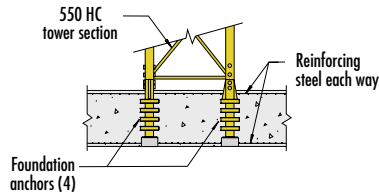
IMPORTANT! Litronic® cranes are equipped with Liebherr's state of the art PLC system that provides precise monitoring, control and coordination of all cranes functions. This feature also permits a load increase of up to 20% as illustrated in the heavy lift mode (**LM2**) chart above. Heavy lift mode is permitted only when wind speed is less than 31 mph (50 kph). Contact Morrow for more information regarding the many features of the 316 EC-B 12 Litronic tower crane.

LIEBHERR 316 EC-B 12 Litronic®

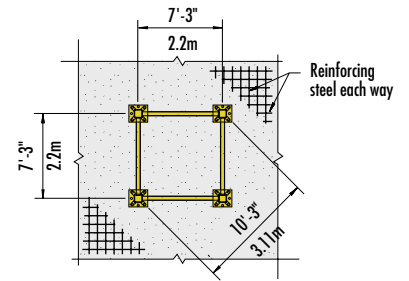
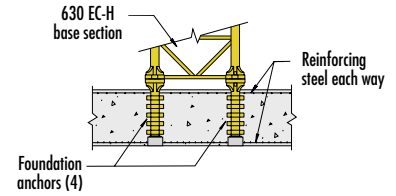
Foundation Details



with 290 HC Base Tower
concrete slab



with 550 HC Tower Section
concrete slab



with 630 EC-H Base Tower
concrete slab

Hoist Speed and Capacity

| Hoist Unit | WiW 300 VZ 409 | 2-Part Line | | | | LM 1 |
|--|----------------|-------------|--------------------------------------|--------------------------------|-----------------------------------|----------------------------------|
| | | Speed | Capacity | Line Speed | Capacity | Line Speed |
| 147 hp (110 kW) FC hoist unit Variable frequency drive (VFD) 3-speed electromagnetic gear shifting 8L - 242 | | 1 | up to 26,460 lbs up to 12,345 lbs | @ 0 - 154 fpm @ 0 - 305 fpm | up to 12 000 kg up to 5 600 kg | @ 0 - 47m/min @ 0 - 93m/min |
| | | 2 | up to 14,550 lbs up to 6,395 lbs | @ 0 - 262 fpm @ 0 - 545 fpm | up to 6 600 kg up to 2 900 kg | @ 0 - 80m/min @ 0 - 160m/min |
| | | 3 | up to 7,935 lbs up to 2,870 lbs | @ 0 - 440 fpm @ 0 - 879 fpm | up to 3 600 kg up to 1 300 kg | @ 0 - 134m/min @ 0 - 268m/min |

IMPORTANT! Capacities and line speeds indicated will vary depending on the amount of hoist wire rope installed. This crane model may be equipped with a hoist unit other than that specified in the data shown above. To verify, check serial number and refer to 316 EC-B 12 Operations Manual for additional information.

Motor Information


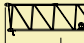

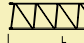
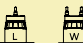
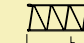


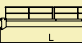
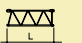
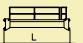
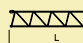
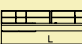

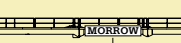
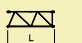
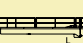
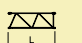



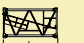
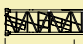

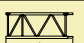
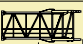
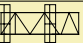
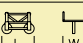
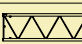
| Drive Unit | Horsepower | Kilowatts | Speed | |
|---------------------|------------|------------|-------------|---------------|
| Trolley (VFD) | 10 hp | 7.5 kW | 0 - 361 fpm | 0 - 110 m/min |
| Swing (VFD) | 2 x 8.4 hp | 2 x 6.3 kW | 0.7 rpm | |
| Travelling (550 HC) | 4 x 10 hp | 4 x 7.5 kW | 82 fpm | 25 m/min |
| Travelling (290 HC) | 2 x 10 hp | 2 x 7.5 kW | 82 fpm | 25 m/min |

Power Requirements

Static: 480 V — 3-phase — 60 Hz — 200 Amperes — 170 kVA
Travelling: 480 V — 3-phase — 60 Hz — 250 Amperes — 210 kVA

Specifications subject to change without prior notice. For additional information, contact Morrow Equipment.

LIEBHERR 316 EC-B 12 Litronic®

| Description | Dimensions L x W x H | Weight | Description | Dimensions L x W x H | Weight |
|--|--|-------------------------|--|--|-------------------------|
| Slewing Assembly (Complete) ¹ |  26'-7" x 9'-0" x 9'-3" 8.11m x 2.74m x 2.83m | 31,300 lbs 14 200 kg | Jib Section #611  ① | 41'-2" x 6'-1" x 10'-4" 12.55m x 1.86m x 3.16m | 12,590 lbs 5 710 kg |
| Slewing Assembly Upper Part ² |  21'-1" x 6'-0" x 9'-3" 6.42m x 1.83m x 2.83m | 15,430 lbs 7 000 kg | Jib Section #621  ② | 40'-4" x 5'-6" x 9'-10" 12.29m x 1.66m x 2.99m | 7,760 lbs 3 520 kg |
| Slewing Assembly Lower Part ³ |  8'-4" x 9'-0" x 7'-9" 2.55m x 2.74m x 2.37m | 15,870 lbs 7 200 kg | Jib Section #622  ③ | 33'-9" x 5'-5" x 9'-9" 10.27m x 1.65m x 2.97m | 4,780 lbs 2 170 kg |
| Hoist Unit (VFD) ⁴ 147 hp (110 kW) |  9'-5" x 7'-3" x 6'-9" 2.88m x 2.22m x 2.07m | 7,495 lbs 3 400 kg | Jib Section #631  ④ | 17'-2" x 5'-5" x 9'-9" 5.24m x 1.65m x 2.97m | 2,600 lbs 1 180 kg |
| Counterjib Section (Inner) |  28'-2" x 7'-9" x 6'-11" 8.59m x 2.35m x 2.1m | 7,720 lbs 3 500 kg | Jib Section #632  ⑤ | 17'-1" x 5'-5" x 6'-1" 5.23m x 1.65m x 1.86m | 1,810 lbs 820 kg |
| Counterjib Section (Intermediate) |  23'-7" x 7'-9" x 6'-11" 7.2m x 2.35m x 2.1m | 6 610 lbs 3 000 kg | Jib Section #633  ⑥ | 33'-8" x 5'-5" x 6'-1" 10.27m x 1.65m x 1.86m | 2,730 lbs 1 240 kg |
| Counterjib Section (Outer) |  28'-10" x 7'-9" x 6'-11" 8.79m x 2.35m x 2.1m | 10,140 lbs 4 600 kg | Jib Section #634  ⑦ | 33'-7" x 5'-5" x 6'-0" 10.26m x 1.65m x 1.84m | 1,830 lbs 830 kg |
| Counterjib (83-ft) ⁵ |  79'-5" x 7'-9" x 6'-11" 24.2m x 2.35m x 2.1m | 32,190 lbs 14 600 kg | Jib Section #635  ⑧ | 17'-3" x 5'-5" x 6'-0" 5.26m x 1.65m x 1.84m | 1,060 lbs 480 kg |
| Counterjib (60-ft) ⁶ |  56'-5" x 7'-9" x 6'-11" 17.2m x 2.35m x 2.1m | 24,690 lbs 11 200 kg | Jib Section #635  ⑩ | 17'-3" x 5'-5" x 6'-0" 5.26m x 1.65m x 1.84m | 1,060 lbs 480 kg |
| Counterweight Block A ⁷ |  4'-4" x 11" x 8'-11" 1.31m x 0.28m x 2.71m | 4,960 lbs 2 250 kg | Jib Tip Section #641  ⑨ | 6'-3" x 5'-11" x 5'-11" 1.91m x 1.82m x 1.82m | 550 lbs 250 kg |
| Counterweight Block B ⁷ |  4'-4" x 11" x 5'-11" 1.31m x 0.28m x 1.8m | 3,195 lbs 1 450 kg | Jib Assembly Pt 1 246-ft & 230-ft Jibs ①②③④ | 128'-0" x 6'-1" x 10'-4" 39m x 1.86m x 3.16m | 32,630 lbs 14 800 kg |
| Tower Section 290HC (B/B) |  13'-7" x 7'-7" x 7'-7" 4.14m x 2.3m x 2.3m | 5,070 lbs 2 300 kg | Jib Assembly ⁸ 246-ft (75m) Pt 2 ⑤⑥⑦⑧⑩⑨ | 120'-1" x 5'-5" x 6'-1" 36.6m x 1.65m x 1.86m | 9,260 lbs 4 200 kg |
| Base Section 290HC (B/B) |  40'-9" x 7'-7" x 7'-7" 12.42m x 2.3m x 2.3m | 17,505 lbs 7 940 kg | Jib Assembly ⁸ 230-ft (70m) Pt 2 ⑤⑥⑦⑧⑨ | 103'-8" x 5'-5" x 6'-1" 31.6m x 1.65m x 1.86m | 8,160 lbs 3 700 kg |
| Long Section 290HC (B/B) |  40'-9" x 7'-7" x 7'-7" 12.42m x 2.3m x 2.3m | 12,720 lbs 5 770 kg | Jib Assembly ⁸ ①②③④⑤⑥⑦⑨ | 215'-3" x 6'-1" x 10'-4" 65.6m x 1.86m x 3.16m | 39,680 lbs 18 000 kg |
| Std Tower Section 550HC (P/P) |  20'-7" x 8'-0" x 8'-0" 6.28m x 2.45m x 2.45m | 14,150 lbs 6 420 kg | Jib Assembly ⁸ ①②③④⑥⑦⑨ | 198'-10" x 6'-1" x 10'-4" 60.6m x 1.86m x 3.16m | 37,920 lbs 17 200 kg |
| Transition (P/B) 550 HC - 290HC |  27'-7" x 9'-2" x 8'-10" 8.42m x 2.79m x 2.69m | 13,050 lbs 5 920 kg | Jib Assembly ⁸ ①②③④⑤⑥⑨ | 182'-5" x 6'-1" x 10'-4" 55.6m x 1.86m x 3.16m | 37,700 lbs 17 100 kg |
| Top Climbing Unit 290HC |  27'-7" x 9'-2" x 8'-10" 8.42m x 2.79m x 2.69m | 16,535 lbs 7 500 kg | Jib Assembly ⁸ ①②③④⑥⑨ | 166'-0" x 6'-1" x 10'-4" 50.6m x 1.86m x 3.16m | 35,710 lbs 16 200 kg |
| Trolley |  6'-2" x 6'-0" x 5'-5" 1.87m x 1.84m x 1.64m | 2,310 lbs 1 050 kg | Jib Assembly ⁸ ①②③④⑤⑨ | 149'-7" x 6'-1" x 10'-4" 45.6m x 1.86m x 3.16m | 34,830 lbs 15 800 kg |
| Base Section 630 ECH (B/P) |  40'-9" x 8'-10" x 8'-10" 12.43m x 2.68m x 2.68m | 31,970 lbs 14 500 kg | Jib Assembly ⁸ ①②③④⑨ | 133'-2" x 6'-1" x 10'-4" 40.6m x 1.86m x 3.16m | 32,850 lbs 14 900 kg |

NOTE! Weights and dimensions are approximate. Scale components before lifting. Please consult Operations Manual before erecting, operating, servicing or dismantling crane.

¹ Slewing Assembly Complete includes operator's cab, platforms, two swing motors, slewing ring, slewing ring support. Dimensions shown above are with climbing shoes in transport position.

² Slewing Assembly Upper Part includes operator's cab, platforms and two swing motors.

³ Slewing Assembly Lower Part includes slewing ring, slewing ring support and four non-detachable climbing shoes. Dimensions shown above are with climbing shoes in transport position.

⁴ Includes 147 hp (110 kW) hoist drive with rope drum, switchgear panels, and hoist unit frame. Weight indicated DOES NOT include wire rope. Weight of hoist rope, based on a typical installation of 1,000 ft (305m) of rope, is approximately 1,410 lbs (640 kg). Contact Morrow for information.

⁵ Counterjib A includes counterjib sections #1, #3, pendant bars, handrails and D block. Counterjib A is required for jibs 164 ft (50.0m) and shorter. D block weighs 5,290 lbs (2 400 kg).

⁶ Counterjib B includes counterjib sections #1, #2, #3, pendant bars, handrails and D block. Counterjib B is required for jibs 180 ft (55.0m) and longer. D block weighs 5,290 lbs (2 400 kg).

⁷ Counterweight block dimensions are for blocks constructed WITHOUT frames. When fabricating counterweights, consult Operations Manual for concrete requirements.

⁸ Jib Assemblies include jib sections, pendant bars, connecting pins and plates, trolley drive unit, trolley wire rope, hook block and trolley.



Morrow Equipment

COMPANY, L. L. C.

3218 Pringle Road SE • P O Box 3306 • Salem, Oregon 97302-0306 USA
503.585.5721 • Fax. 503.363.1172 • www.morrow.com • info@morrow.com

The American home of
LIEBHERR
TOWER CRANES

Atlanta, GA • Charlotte, NC • Chicago, IL • Denver, CO • Honolulu, HI • Houston, TX • Los Angeles, CA • Las Vegas, NV
Millwood, NY • St. Louis, MO • San Francisco, CA • Dallas, TX • Seattle, WA • Miami, FL • Tampa, FL • Washington, DC
Sydney, Australia • Wellington, New Zealand • Vancouver, BC, Canada • Toronto, ON, Canada • México DF, México